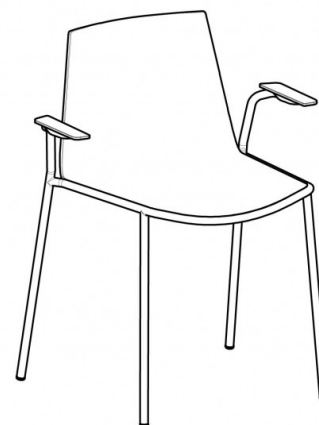
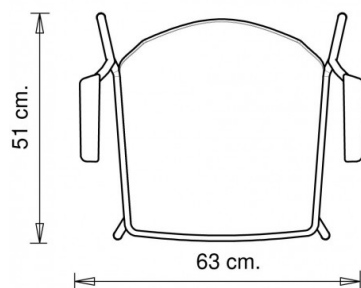
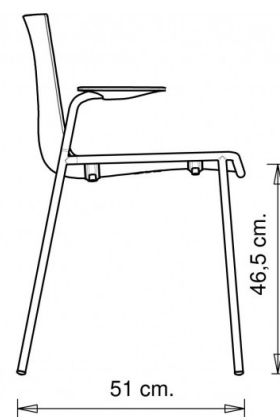
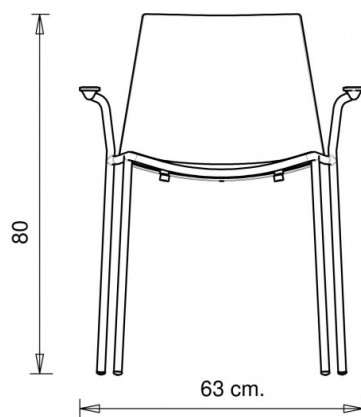


Cuba 621

CUBA COLLECTION:

Cuba 620, Cuba 620m, Cuba 620N, Cuba 621, Cuba 621m, Cuba 621N, Cuba 622, Cuba 622m, Cuba 622N, Cuba 623, Cuba 623m, Cuba 623b, Cuba 623bm, Trolley 536,



DESIGNER-STUHL:

Armlehnstuhl mit 4-beinigem Stahlgestell.
Sitzfläche aus Polypropylen.

Zubehoer

Sockel aus Blech zum Stapeln von Stühlen
620/621: Stapeln bis zu 10 Stück.

STAPELBAR

7

GEWICHT

5,8 Kg

VERPACKUNG

0,47 m³

STÜCK PRO KARTON

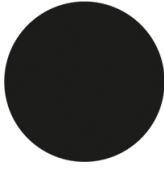
4

MATERIALEN SITZFLÄCHEN

PP POLYPROPYLEN



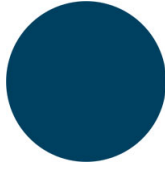
NCS S0500-N Reinweiß
☀️



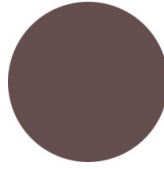
NCS S9000-N Tiefschwarz
☀️



NCS S4005-B20G Fehgrau
☀️



NCS S6030-B Capri Blau
☀️





NCS S6502-R Ton
☀️



NCS S3010-G50Y Pistazie
☀️

ANMERKUNGEN

Ressourcen

3ds  | dwg 

GESTELL

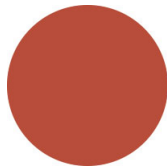
AC STAHL



NCS S4000-N VR
Weißaluminium



NCS S9000-N VR
Tiefschwarz



NCS S3060-Y80R
Korallenrot



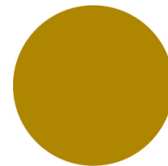
CR Verchromt



NCS S9000-N VR Matt
Tiefschwarz



VR Rau Metallbronze



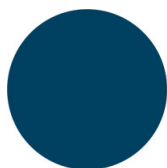
NCS S3060-Y
Currygelb



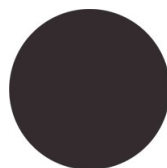
NCS S7020-G50Y
Olivgrün



NCS S4050-B40G
Wasserblau



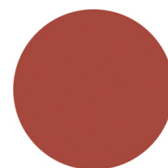
NCS S6030-B
Capri Blau



NCS S8005-Y20R
Braun



NCS s0502-b VR
Verkehrsweiß



NCS S4040-R
Marsala



VR Zinn



NCS S0500-N VR
Reinweiß



NCS S7502-B VR
Anthrazitgrau



VERWENDUNGSZWECK

Kaffeehäuser & Restaurants, Retail, Outdoor,