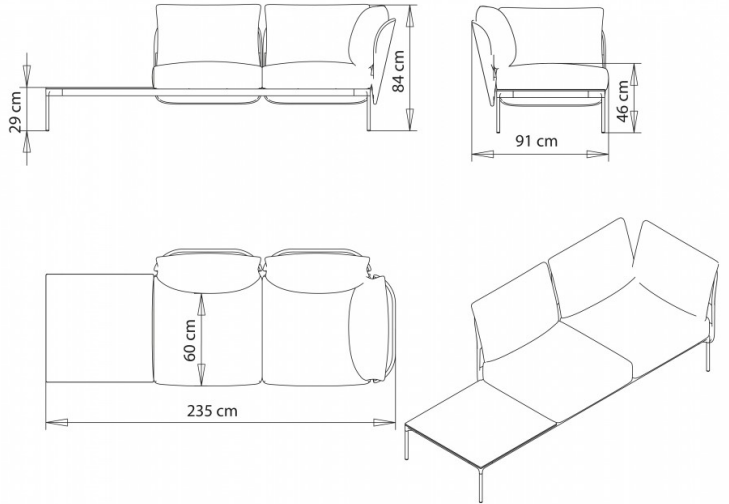


Bloom 1233sx

BLOOM COLLECTION:

Bloom 1200, Bloom 1202, Bloom 1207, Bloom 1212, Bloom 1217, Bloom 1205, Bloom 1215, Bloom 1230, Bloom 1225, Bloom 1201, Bloom 1206, Bloom 1216, Bloom 1202dx, Bloom 1202sx, Bloom 1207dx, Bloom 1207sx, Bloom 1217dx, Bloom 1217sx, Bloom 1208sx, Bloom 1208dx, Bloom 1206dx, Bloom 1206sx, Bloom 1214dx, Bloom 1214sx, Bloom 1213dx, Bloom 1213sx, Bloom 1219sx, Bloom 1219dx, Bloom 1218dx, Bloom 1218sx, Bloom 1232dx, Bloom 1232sx, Bloom 1231dx, Bloom 1231sx, Bloom 1203, Bloom 1210dx, Bloom 1210sx, Bloom 1209dx, Bloom 1209sx, Agami 1211dx, Bloom 1211sx, Bloom 1221dx, Bloom 1221sx, Bloom 1220dx, Bloom 1220sx, Bloom 1222dx, Bloom 1222sx, Bloom 1233dx, Bloom 1233sx, Bloom 1235, Bloom 1236, Bloom 1237, Bloom 1238, Bloom 1240, Bloom 1241, Bloom 1242,



DESIGNER-SOFA:

2-Sitzer Sofa mit Rückenlehne und linke Tischplatte, für Eckkompositionen.

GEWICHT

52,5 kg

VERPACKUNG

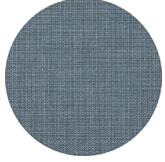
1,95 m³

STÜCK PRO KARTON

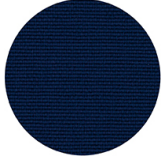
1

MATERIALEN SITZFLÄCHEN

TE STOFFE



Panarea
+ 4 Farben



Reviva Hero
+ 5 Farben



Reviva Iris
+ 7 Farben



Reviva Amelia
+ 5 Farben



Fabthirty
+ 6 Farben



ANMERKUNGEN

Ressourcen

3ds



| dwg



MATERIALEN TISCHPLATTEN

STR - full color HPL COMPACTPLATTE



Weiss



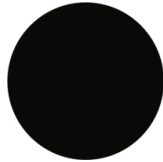
STR - compact HPL COMPACTPLATTE



Weiss - Kat A



Graphite
Anti Fingerabdrücke - Kat G



Fenix NTM0720
Nero Ingo
Anti Fingerabdrücke - Kat
H

GESTELL

TE STOFFE



3D Cover
+ 5 Farben



AC STAHL



VR Zinn



NCS S0500-N VR
Reinweiß



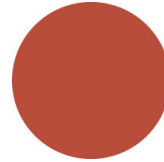
NCS S7502-B VR
Anthrazitgrau



NCS S4000-N VR
Weißaluminium



NCS S9000-N VR
Tiefschwarz



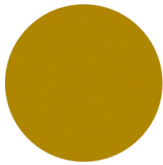
NCS S3060-Y80R
Korallenrot



NCS S9000-N VR Matt
Tiefschwarz



VR Rau Metallbronze



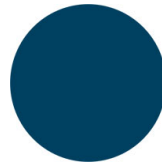
NCS S3060-Y
Currygelb



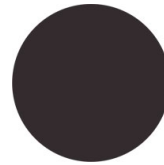
NCS S7020-G50Y
Olivgrün



NCS S4050-B40G
Wasserblau



NCS S6030-B
Capri Blau



NCS S8005-Y20R
Braun



NCS s0502-b VR
Verkehrsweiß



NCS S4040-R
Marsala



VERWENDUNGSZWECK

Kaffeehäuser & Restaurants, Hotels, Unterhaltungsbereich, Reisen, Retail, Outdoor,