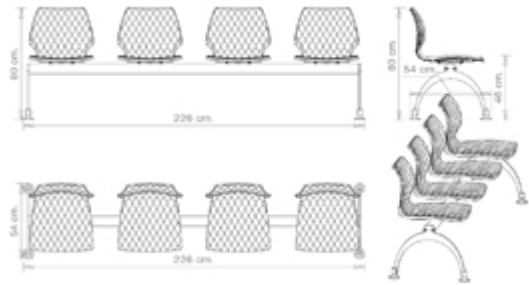


Uni 223

UNI COLLECTION:

Uni 550, Uni 378, Uni 550M, Uni 378B, Uni 378M, Uni 378B-M, Uni 380, Uni 380M, Uni 380B, Uni 380B-M, Uni 562, Uni 562M, Uni 386, Uni 386M, Uni 602, Uni 602M, Uni 551, Uni 551M, Uni 552, Uni 552M, Uni 552-G, Uni 552M-G, Uni 552T, Uni 552G-T, Uni 558-DP, Uni 558M-DP, Uni 558-DR, Uni 553, Uni 558M-DR, Uni 553M, Uni 577, Uni 577M, Uni 544, Uni 391, Uni 565, Uni 391M, Uni 393, Uni 393M, Uni 220, Uni 221, Uni 223, Uni 222, Uni 578-4P, Uni 578M-4P, Uni 578-5R, Uni 578M-5R, Trolley 536,



DESIGNER-STUHL:

Sitzsystem auf Balken, 4 Sitzplätze. Gestell aus Stahl. Sitzfläche aus Polypropylen.

GEWICHT

27,5 kg

VERPACKUNG

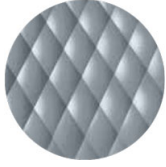
1,25 m³

STÜCK PRO KARTON

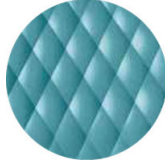
1

MATERIALEN SITZFLÄCHEN

PP POLYPROPYLEN



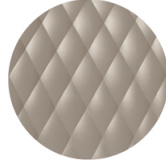
NCS S4005-B20G
Fehgrau
≡



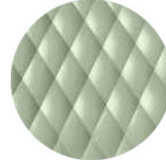
NCS S4020-B10G
Stauben Blau
≡



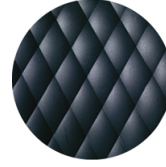
NCS S6502-R Ton
≡



NCS S4005-Y50R
Taubengrau
≡



NCS S3010-G50Y
Pistazie
≡



NCS S7502-B
Anthrazitgrau
≡



RAL 9005 Tiefschwarz
≡



NCS S3060-Y80R
Korallenrot
≡



NCS S0502-B
Verkehrsweiß
≡



NCS S7020-G50Y
Olivgrün
☀

ANMERKUNGEN

Ressourcen

3ds  | dwg 

Die **marsala-** und **olivgrünen** Schalen bestehen zu **100% aus recyceltem Polypropylen** aus Industrieabfällen.

GESTELL

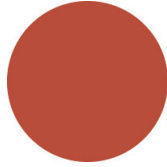
AC STAHL



NCS S4000-N VR
Weißaluminium



NCS S9000-N VR
Tiefschwarz



NCS S3060-Y80R
Korallenrot



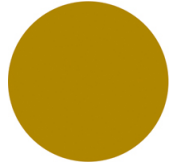
CR Verchromt



NCS S9000-N VR Matt
Tiefschwarz



VR Rau Metallbronze



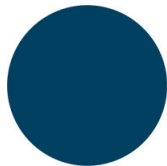
NCS S3060-Y
Currygelb



NCS S7020-G50Y
Olivgrün



NCS S4050-B40G
Wasserblau



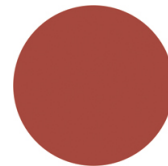
NCS S6030-B
Capri Blau



NCS S8005-Y20R
Braun



NCS s0502-b VR
Verkehrsweiß



NCS S4040-R
Marsala



VR Zinn



NCS S0500-N VR
Reinweiß



NCS S7502-B VR
Anthrazitgrau



VERWENDUNGSZWECK

Bildungsbereich, Büros und Warteräume,