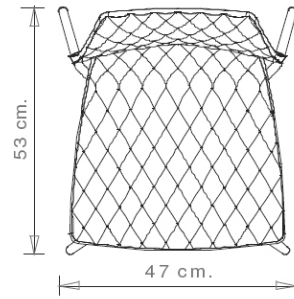
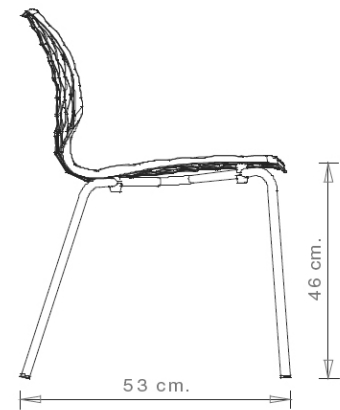
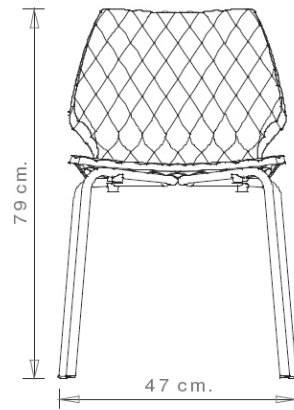


Uni 550

UNI COLLECTION:

Uni 550, Uni 378, Uni 550M, Uni 378B, Uni 378M, Uni 378B-M, Uni 380, Uni 380M, Uni 380B, Uni 380B-M, Uni 562, Uni 562M, Uni 386, Uni 386M, Uni 602, Uni 602M, Uni 603, Uni 551, Uni 603M, Uni 551M, Uni 552, Uni 552M, Uni 552-G, Uni 552M-G, Uni 552T, Uni 552G-T, Uni 558-DP, Uni 558M-DP, Uni 558-DR, Uni 553, Uni 558M-DR, Uni 553M, Uni 577, Uni 577M, Uni 544, Uni 391, Uni 565, Uni 391M, Uni 393, Uni 393M, Uni 220, Uni 221, Uni 223, Uni 222, Trolley 536,



DESIGNER-STUHL:

Stuhl mit 4-beinigem Stahlgestell. Sitzfläche aus Polypropylen.

STAPELBAR

8

GEWICHT

4,6 kg

VERPACKUNG

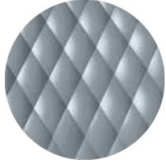
0,36 m³

STÜCK PRO KARTON

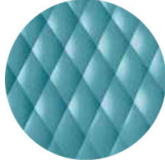
5

MATERIALEN SITZFLÄCHEN

PP POLYPROPYLEN



NCS S4005-B20G
Fehgrau
≡



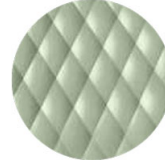
NCS S4020-B10G
Stauben Blau
≡



NCS S6502-R Ton
≡



NCS S4005-Y50R
Taubengrau
(Verfügbar solange der
Vorrat reicht)
≡



NCS S3010-G50Y
Pistazie
≡



NCS S7502-B
Anthrazitgrau
≡



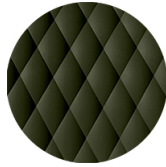
RAL 9005 Tiefschwarz
≡



NCS S3060-Y80R
Korallenrot
≡



NCS S0502-B
Verkehrsweiß
≡



NCS S7020-G50Y
Olivgrün
☀

ANMERKUNGEN

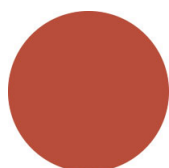
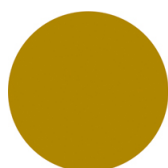
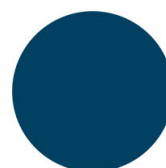
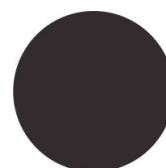
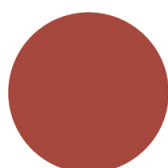
Die **marsala-** und **olivgrünen** Schalen bestehen zu **100% aus recyceltem Polypropylen** aus Industrieabfällen.

GESTELL

AC STAHL

VR Zinn
☀NCS S0500-N VR
Reinweiß
☀NCS S4000-N VR
Weißaluminium
☀NCS S7502-B VR
Anthrazitgrau
☀NCS S9000-N VR
Tiefschwarz
☀

CR Verchromt

NCS S9000-N VR Matt
Tiefschwarz
☀NCS S3060-Y80R
Korallenrot
☀VR Rau Metallbronze
☀NCS S3060-Y
Currygelb
☀NCS S7020-G50Y
Olivgrün
☀NCS S4050-B40G
Wasserblau
☀NCS S6030-B
Capri Blau
☀NCS S8005-Y20R
Braun
☀NCS s0502-b VR
Verkehrsweiß
☀NCS S4040-R
Marsala
☀

ZERTIFIZIERUNGEN

- > UNI/EN 15373:2007 - Test 1. Carico statico sedile e schienale: 3 (23/01/13)
- > UNI/EN 15373:2007 - Test 10. Prova di fatica sedile e schienale: 3 (27/06/11)
- > UNI/EN 15373:2007 - Test 19. Prova d'urto sul sedile: 3 (27/06/11)

VERWENDUNGSZWECK

Kaffeehäuser & Restaurants, Hotels, Bildungsbereich, Unterhaltungsbereich, Reisen, Büros und Warteräume, Retail, Gesundheitsbereich, Outdoor,