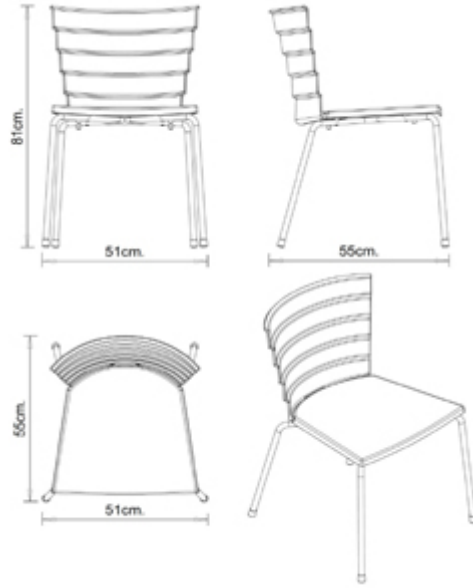


Bikini 530

BIKINI COLLECTION:

Bikini 530, Bikini 531, Bikini 349,



Chair with 4 legs steel frame and polypropylene shell.

STACKABLE

4

WEIGHT

5,2 Kg

PACK

0,39 m³

PIECES PER BOX

4

FINISHES SEATING

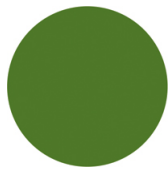
PP POLYPROPYLENE 



NCS S0500-N
Pure white
≡



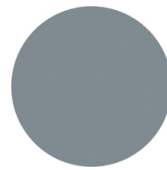
NCS S9000-N
Jet black
≡



RAL 6010 Grass green
(Available while stocks last)
≡



RAL 8001 Ochre brown
(Available while stocks last)
≡



NCS S4005-B20G
Squirrel grey
☀

FRAMES

AC STEEL



NCS s0502-b VR Traffic
white
☀️



VR Pewter
☀️



NCS S0500-N VR Pure
white
☀️



NCS S4000-N VR
White aluminium
☀️



CR Chrome



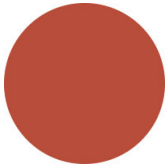
NCS S7502-B VR
Anthracite grey
☀️



NCS S9000-N VR Jet
black
☀️



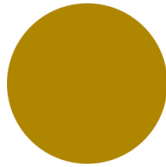
NCS S9000-N VR Matt
Jet Black
☀️



NCS S3060-Y80R
Coral red
☀️



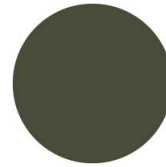
VR Rough metallic
bronze
☀️



NCS S3060-Y Curry
☀️



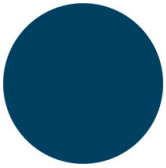
NCS S4050-B40G
Water blue
☀️



NCS S7020-G50Y
Olive green
☀️



NCS S8005-Y20R
Brown
☀️



NCS S6030-B
Capri blue
☀️

CERTIFICATIONS

- > UNI/EN 16139:2013 - Par.4.1. Generale. Par.4.2. Cesoiamento (28/04/15)
- > UNI/EN 16139:2013 - Par.4.3. Stabilità (28/04/15)
- > UNI/EN 16139:2013 - Prova 1. Carico statico sedile e schienale: 2-Uso estremo (28/04/15)
- > UNI/EN 16139:2013 - Prova 2. Carico statico sul fronte anteriore: 2-Uso estremo (28/04/15)
- > UNI/EN 16139:2013 - Prova 3. Carico verticale sullo schienale: 2-Uso estremo (28/04/15)
- > UNI/EN 16139:2013 - Prova 8. Prova di fatica sedile e schienale: 2-Uso estremo (07/07/15)

USES

coffee & restaurants, hotels, office and waiting areas, outdoor,

Bikini 531

BIKINI COLLECTION:
Bikini 530, Bikini 531, Bikini 349,



Chair with sled steel frame and polypropylene shell.

STACKABLE

4

WEIGHT

6,4 kg

PACK

0,39 m³

PIECES PER BOX

4

FINISHES SEATING

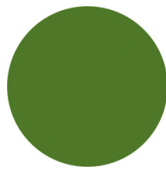
PP POLYPROPYLENE 



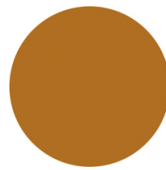
NCS S0500-N
Pure white
≡



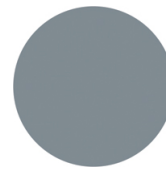
NCS S9000-N
Jet black
≡



RAL 6010 Grass green
(Available while stocks last)
≡



RAL 8001 Ochre brown
(Available while stocks last)
≡



NCS S4005-B20G
Squirrel grey
☀

FRAMES

AC STEEL



NCS s0502-b VR Traffic
white
☀️



VR Pewter
☀️



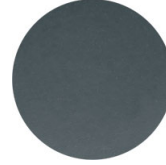
NCS S0500-N VR Pure
white
☀️



NCS S4000-N VR
White aluminium
☀️



CR Chrome



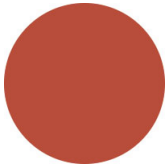
NCS S7502-B VR
Anthracite grey
☀️



NCS S9000-N VR Jet
black
☀️



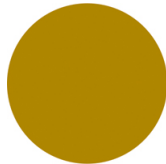
NCS S9000-N VR Matt
Jet Black
☀️



NCS S3060-Y80R
Coral red
☀️



VR Rough metallic
bronze
☀️



NCS S3060-Y Curry
☀️



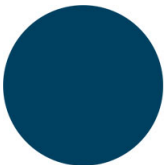
NCS S4050-B40G
Water blue
☀️



NCS S7020-G50Y
Olive green
☀️



NCS S8005-Y20R
Brown
☀️



NCS S6030-B
Capri blue
☀️

USES

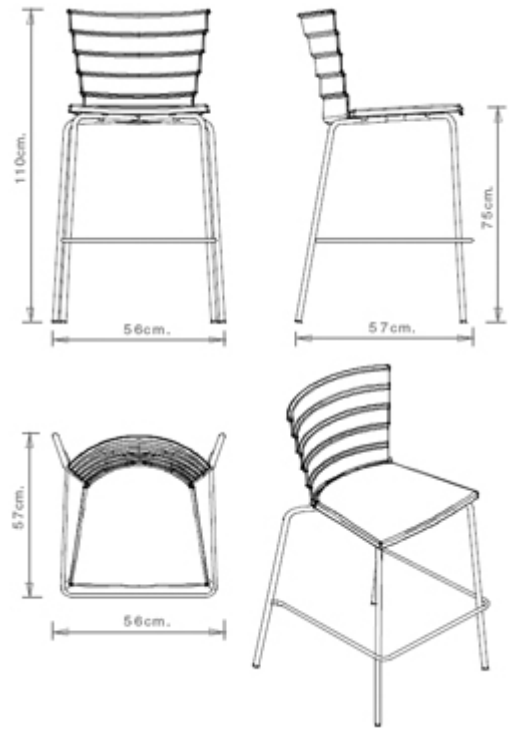
coffee & restaurants, hotels, office and waiting areas, outdoor,

Marc Sadler

Bikini 349

BIKINI COLLECTION:

Bikini 530, Bikini 531, Bikini 349,



Barstool with 4 legs steel frame. Polypropylene seat and backrest.

WEIGHT

6,6 kg

PACK

0,58 m³

PIECES PER BOX

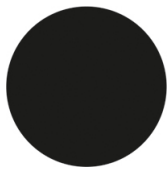
4

FINISHES SEATING

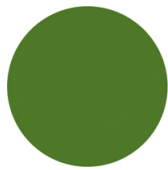
PP POLYPROPYLENE 



NCS S0500-N
Pure white
≡



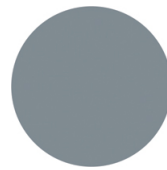
NCS S9000-N
Jet black
≡



RAL 6010 Grass green
(Available while stocks last)
≡



RAL 8001 Ochre brown
(Available while stocks last)
≡



NCS S4005-B20G
Squirrel grey
☀

FRAMES

AC STEEL



NCS s0502-b VR
Traffic white
☀️



VR Pewter
☀️



NCS S0500-N VR
Pure white
☀️



NCS S4000-N VR
White aluminium
☀️



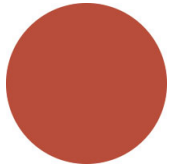
NCS S7502-B VR
Anthracite grey
☀️



NCS S9000-N VR Jet
black
☀️



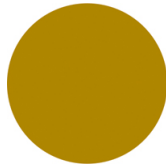
NCS S9000-N VR
Matt Jet Black
☀️



NCS S3060-Y80R
Coral red
☀️



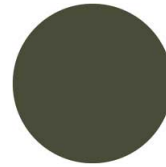
VR Rough metallic
bronze
☀️



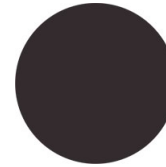
NCS S3060-Y Curry
☀️



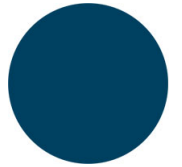
NCS S4050-B40G
Water blue
☀️



NCS S7020-G50Y
Olive green
☀️



NCS S8005-Y20R
Brown
☀️



NCS S6030-B
Capri blue
☀️

USES

coffee & restaurants, hotels, office and waiting areas, outdoor,