

Giorgio Di Tullio

Link 505



LINK & LOW LINK COLLECTION:

Link 505, Link 506, Link 507, Low Link 509, Low Link 508,



Table with birch plywood legs, extruded aluminum beam and laminate, HPL solid laminate top. Hanging hooks and 2 power sockets.

WEIGHT

68 kg

PACK

2x0,38 m³

PIECES PER BOX

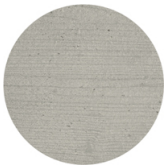
1

FINISHES TABLE TOPS FINISHES

STR – compact HPL SOLID LAMINATE



Wood - Cat C



Concrete - Cat F



FRAMES

LAM - cat.K

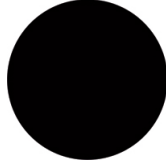
LAMINATE - CAT. K



Lamicolor 778



Lamicolor 753



Lamicolor 202

USES

coffee & restaurants, hotels, educational, entertainment, travel, office and waiting areas, retail, health care,

Giorgio Di Tullio

Link 506



LINK & LOW LINK COLLECTION:

Link 505, Link 506, Link 507, Low Link 509, Low Link 508,



Table frame with legs in birch plywood, finished in laminate. Crossbeam in extruded aluminium and wood-finish laminate. Table top in stratified compact wood finish, 10-mm thick. Purse hanger and 2 power sockets (Link only).

WEIGHT

85 kg

PACK

2x0,51 m³

PIECES PER BOX

1

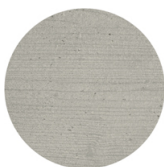
FINISHES TABLE TOPS FINISHES

STR – compact

HPL SOLID LAMINATE



Wood - Cat C



Concrete - Cat F



FRAMES

LAM - cat.K

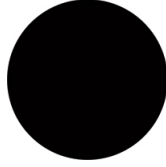
LAMINATE - CAT. K



Lamicolor 778



Lamicolor 753



Lamicolor 202

USES

coffee & restaurants, hotels, educational, entertainment, travel, office and waiting areas, retail, health care,

Giorgio Di Tullio

Link 507



LINK & LOW LINK COLLECTION:

Link 505, Link 506, Link 507, Low Link 509, Low Link 508,



Table frame with legs in birch plywood, finished in laminate. Crossbeam in extruded aluminium and wood-finish laminate. Table top in stratified compact wood finish, 10-mm thick. Purse hanger and 2 power sockets (Link only).

WEIGHT

103 kg

PACK

2x0,65 m³

PIECES PER BOX

1

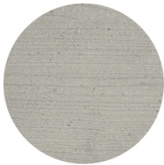
FINISHES TABLE TOPS FINISHES

STR – compact

HPL SOLID LAMINATE



Wood - Cat C



Concrete - Cat F



FRAMES

LAM - cat.K

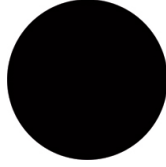
LAMINATE - CAT. K



Lamicolor 778



Lamicolor 753



Lamicolor 202

USES

coffee & restaurants, hotels, educational, entertainment, travel, office and waiting areas, retail, health care,

Giorgio Di Tullio

Low Link 509



LINK & LOW LINK COLLECTION:

Link 505, Link 506, Link 507, Low Link 509, Low Link 508,



Table frame with legs in birch plywood, finished in laminate. Crossbeam in extruded aluminium and wood-finish laminate. Table top in stratified compact wood finish, 10-mm thick.

WEIGHT

82 kg

PACK

2x0,64 m³

PIECES PER BOX

1

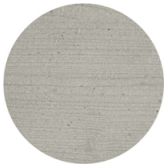
FINISHES TABLE TOPS FINISHES

STR – compact

HPL SOLID LAMINATE



Wood - Cat C



Concrete - Cat F



FRAMES

LAM - cat.K

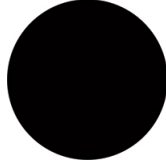
LAMINATE - CAT. K



Lamicolor 778



Lamicolor 753



Lamicolor 202

USES

coffee & restaurants, hotels, educational, entertainment, travel, office and waiting areas, retail, health care,

Giorgio Di Tullio

Low Link 508



LINK & LOW LINK COLLECTION:

Link 505, Link 506, Link 507, Low Link 509, Low Link 508,



Table frame with legs in birch plywood, finished in laminate. Crossbeam in extruded aluminium and wood-finish laminate. Table top in stratified compact wood finish, 10-mm thick.

WEIGHT

62 kg

PACK

2x0,6 m³

PIECES PER BOX

1

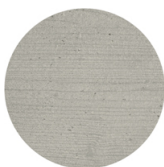
FINISHES TABLE TOPS FINISHES

STR – compact

HPL SOLID LAMINATE



Wood - Cat C



Concrete - Cat F



FRAMES

LAM - cat.K

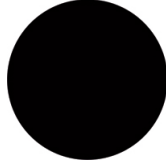
LAMINATE - CAT. K



Lamicolor 778



Lamicolor 753



Lamicolor 202

USES

coffee & restaurants, hotels, educational, entertainment, travel, office and waiting areas, retail, health care,