

Flint 535-A

FLINT COLLECTION:

Flint 535-A, Flint 535-AM, Flint 535-B,
Flint 535-BM, Flint 549, Flint 549M,



Armchair with 4 legs steel frame and backrest,
polyamide seat.

STACKABLE

4

WEIGHT

6,5 Kg

PACK

0,39 m³

PIECES PER BOX

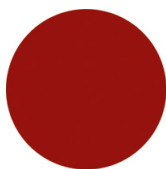
4

FINISHES SEATING

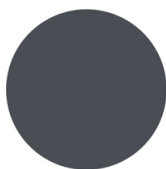
PA POLYAMIDE



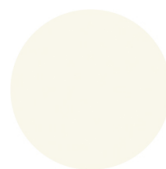
NCS S4005-Y20R
Turtle-dove



RAL 3003 Ruby red
(Available while stocks
last)



RAL 7016 Anthracite grey



NCS S0500-N
Pure white



FRAMES

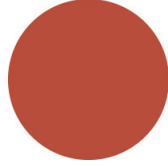
AC STEEL



NCS S4000-N VR White aluminium
☀



NCS S9000-N VR Jet black
☀



NCS S3060-Y80R Coral red
☀



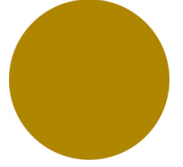
CR Chrome



NCS S9000-N VR Matt Jet Black
☀



VR Rough metallic bronze
☀



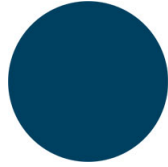
NCS S3060-Y Curry
☀



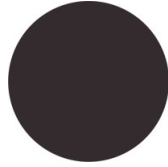
NCS S7020-G50Y Olive green
☀



NCS S4050-B40G Water blue
☀



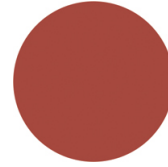
NCS S6030-B Capri blue
☀



NCS S8005-Y20R Brown
☀



NCS s0502-b VR Traffic white
☀



NCS S4040-R Marsala
☀



VR Pewter
☀



NCS S0500-N VR Pure white
☀



NCS S7502-B VR Anthracite grey
☀

CERTIFICATIONS

- > UNI/EN 16139:2013 - Par.4.1. Generale. Par. 4.2. Cesoiamento (14/04/15)
- > UNI/EN 16139:2013 - Par.4.3. Stabilità (14/04/15) > UNI/EN 16139:2013 - Prova 1. Carico statico sedile e schienale: 2-Uso estremo (14/04/15)
- > UNI/EN 16139:2013 - Prova 2. Carico statico sul fronte anteriore: 2-Uso estremo (14/04/15) > UNI/EN 16139:2013 - Prova 3. Carico verticale sullo schienale: 2-Uso estremo (14/04/15)
- > UNI/EN 16139:2013 - Prova 5. Carico statico laterale sui braccioli: 2-Uso estremo (14/04/15)
- > UNI/EN 16139:2013 - Prova 6. Carico statico verticale verso il basso sui braccioli: 2-Uso estremo (14/04/15)
- > UNI/EN 16139:2013 - Prova 8. Prova di fatica sedile e schienale: 2-Uso estremo (15/07/15)

USES

coffee & restaurants, hotels, retail, outdoor,