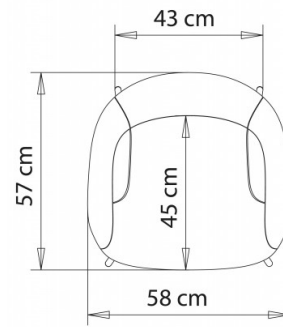
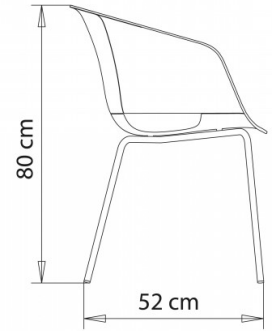
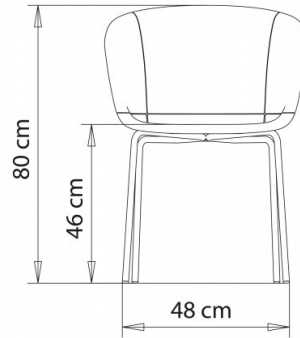


## Dunk 1191

**DUNK COLLECTION:**

Dunk 1191, Dunk 1190, Dunk 1191m, Dunk 1191n, Dunk 1192, Dunk 1192m, Dunk 1192n, Dunk 1193, Dunk 1193m, Dunk 1193n, Dunk 1194, Dunk 1194m, Dunk 1194n, Dunk 1195m, Dunk 1195, Dunk 1195n, Dunk 1196, Dunk 1196m, Dunk 1196n,



Armchair, shell in closed version with steel frame, 4 legs.

**WEIGHT**

5,6 Kg

**PACK**

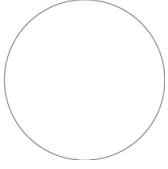
0,32 m<sup>3</sup>

**PIECES PER BOX**

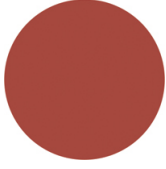
1

## FINISHES SEATING

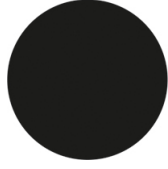
### PP POLYPROPYLENE



NCS S0502-B  
Traffic white



NCS S4040-R  
Marsala



NCS S9000-N  
Jet black



## NOTE

### Resources

[3ds](#)



[dwg](#)



The marsala-coloured shell, available in open and closed versions, is made of r-PP (recycled PP) polypropylene from sorted packaging and products at the end of their life cycle.

## FRAMES

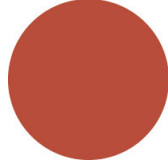
### AC STEEL



NCS S4000-N VR White aluminium  
☀



NCS S9000-N VR Jet black  
☀



NCS S3060-Y80R Coral red  
☀



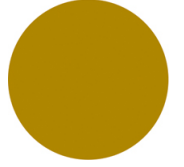
CR Chrome



NCS S9000-N VR Matt Jet Black  
☀



VR Rough metallic bronze  
☀



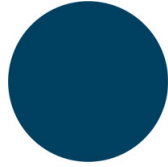
NCS S3060-Y Curry  
☀



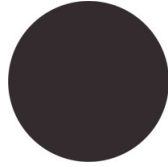
NCS S7020-G50Y Olive green  
☀



NCS S4050-B40G Water blue  
☀



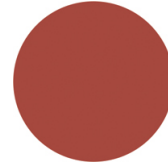
NCS S6030-B Capri blue  
☀



NCS S8005-Y20R Brown  
☀



NCS s0502-b VR Traffic white  
☀



NCS S4040-R Marsala  
☀



VR Pewter  
☀



NCS S0500-N VR Pure white  
☀



NCS S7502-B VR Anthracite grey  
☀

## USES

coffee & restaurants, hotels, educational, entertainment, travel, office and waiting areas, retail, health care, outdoor,