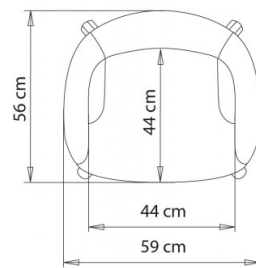
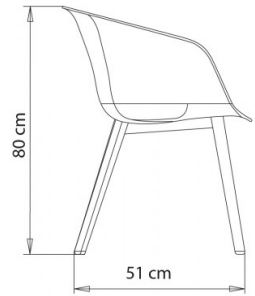
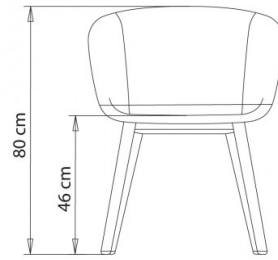


Dunk 1195

DUNK COLLECTION:

Dunk 1191, Dunk 1190, Dunk 1191m, Dunk 1191n, Dunk 1192, Dunk 1192m, Dunk 1192n, Dunk 1193, Dunk 1193m, Dunk 1193n, Dunk 1194, Dunk 1194m, Dunk 1194n, Dunk 1195m, Dunk 1195, Dunk 1195n, Dunk 1196, Dunk 1196m, Dunk 1196n,



Armchair with 4 legs wooden frame and shell in closed version.

WEIGHT

6,6 Kg

PACK

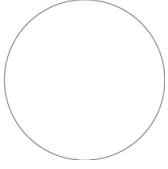
0,34 m³

PIECES PER BOX

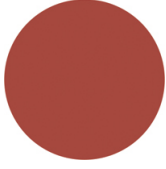
1

FINISHES SEATING

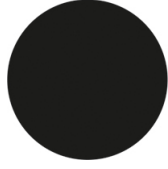
PP POLYPROPYLENE



NCS S0502-B
Traffic white



NCS S4040-R
Marsala



NCS S9000-N
Jet black



NOTE

Resources

[3ds](#)



[dwg](#)



The marsala-coloured shell, available in open and closed versions, is made of r-PP (recycled PP) polypropylene from sorted packaging and products at the end of their life cycle.

FRAMES

LE WOOD



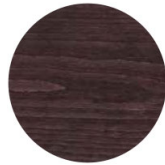
Beech | Honey stained



Beech | Chesnut stained



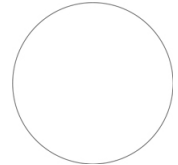
Beech | Grey stained



Beech | Dark brown stained



beech | Black stained



Beech | Stained according to sample

USES

coffee & restaurants, hotels, office and waiting areas, retail, Residenziale,