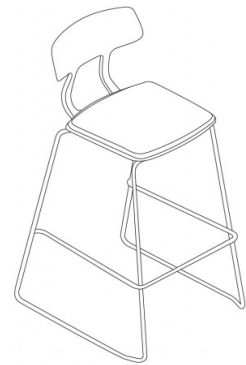
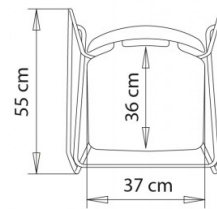
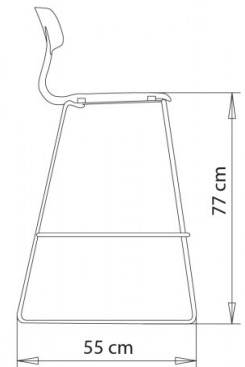
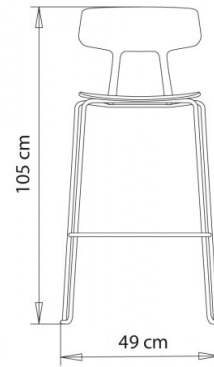


Snap 1117

SNAP COLLECTION:

Snap 1100, Snap 1100n, Snap 1101, Snap 1101n, Snap 1102, Snap 1102b, Snap 1103, Snap 1105, Snap 1105N, Snap 1106, Snap 1106N, Snap 1108, Snap 1108N, Snap 1109, Snap 1109N, Snap 1110, Snap 1110N, Snap 1111, Snap 1111N, Snap 1115, Snap 1115N, Snap 1116, Snap 1116N, Snap 1117,



Barstool with sled steel frame. Polypropylene shell.

WEIGHT

7,1 Kg

PACK

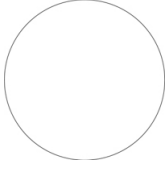
0,58 m³

PIECES PER BOX

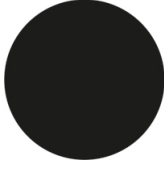
4

FINISHES SEATING

PP POLYPROPYLENE



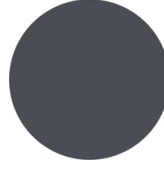
NCS S0502-B
Traffic white



NCS S9000-N
Jet black



NCS S4005-B20G Squirrel
grey (available while
stocks last)



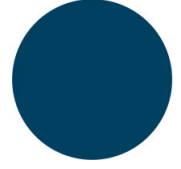
NCS S7502-B
Anthracite grey



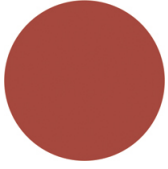
NCS S3010-G50Y
Pistachio (available while
stocks last)



NCS S4050-B40G
Water blue



NCS S6030-B
Capri blue



NCS S4040-R
Marsala



NCS S7020-G50Y
Olive green



NOTE

Resources

3ds



dwg



Notes

Shells in **olive green** and **marsala** are made of **100% recycled polypropylene** from industrial waste.

FRAMES

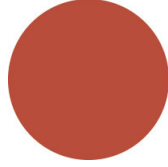
AC STEEL



NCS S4000-N VR White aluminium
☀



NCS S9000-N VR Jet black
☀



NCS S3060-Y80R Coral red
☀



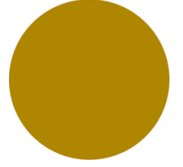
CR Chrome



NCS S9000-N VR Matt Jet Black
☀



VR Rough metallic bronze
☀



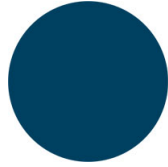
NCS S3060-Y Curry
☀



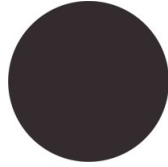
NCS S7020-G50Y Olive green
☀



NCS S4050-B40G Water blue
☀



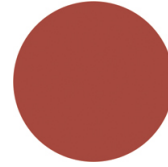
NCS S6030-B Capri blue
☀



NCS S8005-Y20R Brown
☀



NCS s0502-b VR Traffic white
☀



NCS S4040-R Marsala
☀



VR Pewter
☀



NCS S0500-N VR Pure white
☀



NCS S7502-B VR Anthracite grey
☀

USES

coffee & restaurants, hotels, office and waiting areas, retail, Residenziale,