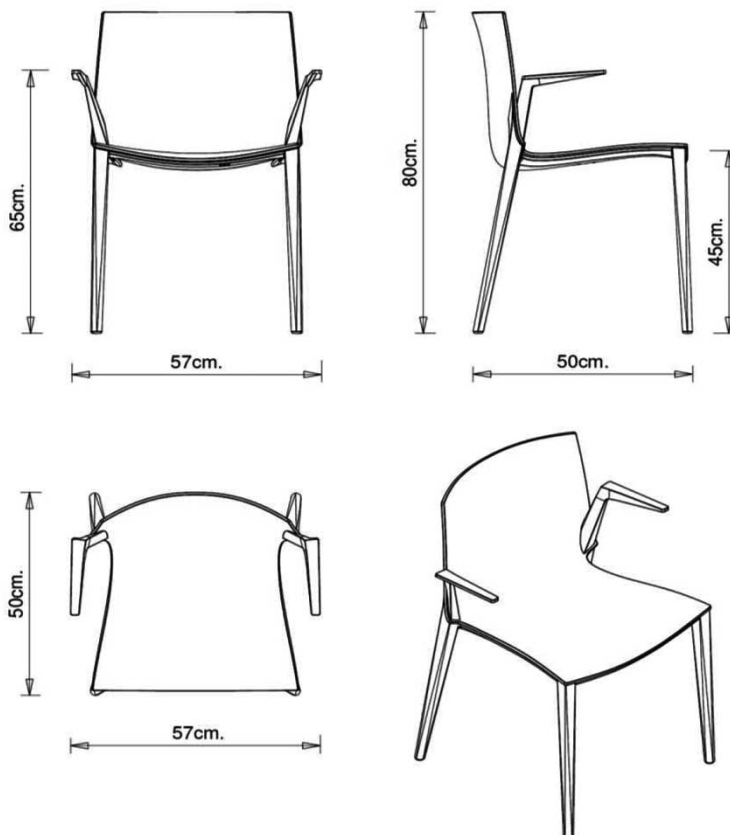


Palau 1021

PALAU COLLECTION:
Palau 1020, Palau 1021,



Monobloc armchair in polypropylene made using the injected air-moulding technology.

STACKABLE

6

WEIGHT

4,1 Kg

PACK

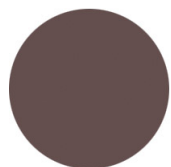
0,36 m³

PIECES PER BOX

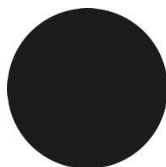
4

FINISHES SEATING

PP POLYPROPYLENE 



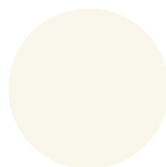
PANTONE 411 C Clay /
NCS S6502-R Clay



RAL 9011
Graphite black



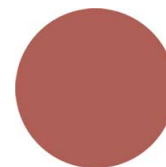
RAL 6003 /
NCS S7020-G50Y
Olive green



RAL 9010 Pure white / NCS
S0500-N



NCS S4020-B10G Dusty blue



NCS S3060-Y80R
Coral red



USES

coffee & restaurants, travel, retail, outdoor,
