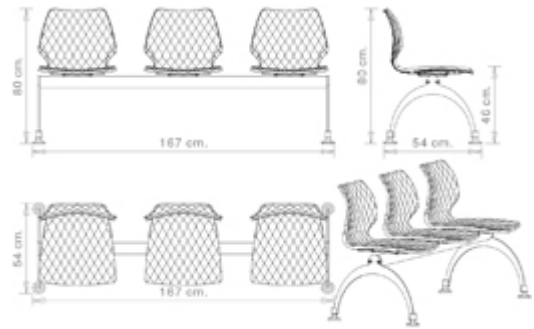


## Uni 221

### UNI COLLECTION:

Uni 550, Uni 378, Uni 550M, Uni 378B, Uni 378M, Uni 378B-M, Uni 380, Uni 380M, Uni 380B, Uni 380B-M, Uni 562, Uni 562M, Uni386, Uni 386M, Uni 602, Uni 602M, Uni 551, Uni 551M, Uni 552, Uni552M, Uni552-G, Uni 552M-G, Uni 552T, Uni 552G-T, Uni 558-DP, Uni 558M-DP, Uni 558-DR, Uni 553, Uni 558M-DR, Uni 553M, Uni 577, Uni 577M, Uni 544, Uni 391, Uni 565, Uni 391M, Uni 393, Uni 393M, Uni 220, Uni 221, Uni 223, Uni 222, Uni 578-4P, Uni 578M-4P, Uni 578-5R, Uni 578M-5R, Trolley 536,



Seating system on bar, 3 seats; steel frame, polypropylene seat.

#### WEIGHT

23 kg

#### PACK

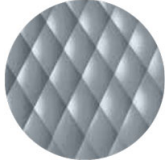
0,89 m<sup>3</sup>

#### PIECES PER BOX

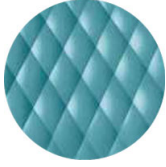
1

## FINISHES SEATING

### PP POLYPROPYLENE



NCS S4005-B20G  
Squirrel grey  
≡



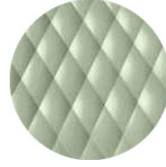
NCS S4020-B10G Dusty  
blue  
≡



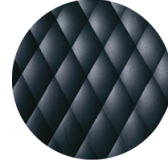
NCS S6502-R Clay  
≡



NCS S4005-Y50R  
Turtle-dove  
≡



NCS S3010-G50Y  
Pistachio  
≡



NCS S7502-B  
Anthracite grey  
≡



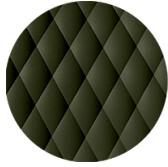
RAL 9005 Jet black  
≡



NCS S3060-Y80R  
Coral red  
≡



NCS S0502-B  
Traffic white  
≡



NCS S7020-G50Y  
Olive green  
☀

## NOTE

### Resources

3ds  | dwg 

Shell in **olive green** is made of **100% recycled polypropylene** from industrial waste.

## FRAMES

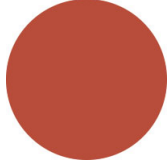
### AC STEEL



NCS S4000-N VR White aluminium  
☀️



NCS S9000-N VR Jet black  
☀️



NCS S3060-Y80R Coral red  
☀️



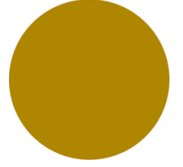
CR Chrome



NCS S9000-N VR Matt Jet Black  
☀️



VR Rough metallic bronze  
☀️



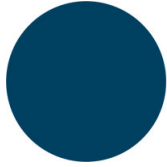
NCS S3060-Y Curry  
☀️



NCS S7020-G50Y Olive green  
☀️



NCS S4050-B40G Water blue  
☀️



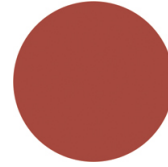
NCS S6030-B Capri blue  
☀️



NCS S8005-Y20R Brown  
☀️



NCS s0502-b VR Traffic white  
☀️



NCS S4040-R Marsala  
☀️



VR Pewter  
☀️



NCS S0500-N VR Pure white  
☀️



NCS S7502-B VR Anthracite grey  
☀️

## USES

educational, office and waiting areas,