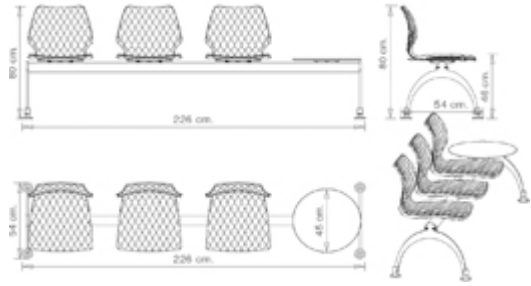


## Uni 222

### UNI COLLECTION:

Uni 550, Uni 378, Uni 550M, Uni 378B, Uni 378M, Uni 378B-M, Uni 380, Uni 380M, Uni 380B, Uni 380B-M, Uni 562, Uni 562M, Uni386, Uni 386M, Uni 602, Uni 602M, Uni 551, Uni 551M, Uni 552, Uni552M, Uni552-G, Uni 552M-G, Uni 552T, Uni 552G-T, Uni 558-DP, Uni 558M-DP, Uni 558-DR, Uni 553, Uni 558M-DR, Uni 553M, Uni 577, Uni 577M, Uni 544, Uni 391, Uni 565, Uni 391M, Uni 393, Uni 393M, Uni 220, Uni 221, Uni 223, Uni 222, Uni 578-4P, Uni 578M-4P, Uni 578-5R, Uni 578M-5R, Trolley 536,



Seating system on bar, 3 seats with shelf; steel frame, polypropylene seat.

#### WEIGHT

29,1 kg

#### PACK

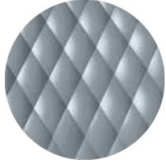
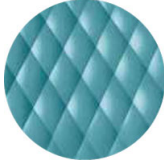
1,25 m<sup>3</sup>

#### PIECES PER BOX

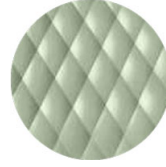
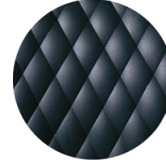
1

## FINISHES SEATING

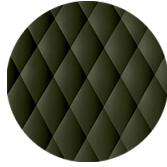
## PP POLYPROPYLENE

NCS S4005-B20G  
Squirrel greyNCS S4020-B10G Dusty  
blue

NCS S6502-R Clay

NCS S4005-Y50R  
Turtle-doveNCS S3010-G50Y  
PistachioNCS S7502-B  
Anthracite grey

RAL 9005 Jet black

NCS S3060-Y80R  
Coral redNCS S0502-B  
Traffic whiteNCS S7020-G50Y  
Olive green

## NOTE

## Resources

3ds



| dwg



Shell in **olive green** is made of **100% recycled polypropylene** from industrial waste.

## FRAMES

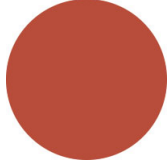
### AC STEEL



NCS S4000-N VR White aluminium  
☀



NCS S9000-N VR Jet black  
☀



NCS S3060-Y80R Coral red  
☀



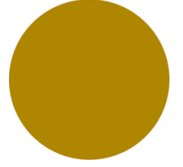
CR Chrome



NCS S9000-N VR Matt Jet Black  
☀



VR Rough metallic bronze  
☀



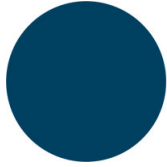
NCS S3060-Y Curry  
☀



NCS S7020-G50Y Olive green  
☀



NCS S4050-B40G Water blue  
☀



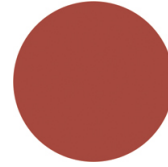
NCS S6030-B Capri blue  
☀



NCS S8005-Y20R Brown  
☀



NCS s0502-b VR Traffic white  
☀



NCS S4040-R Marsala  
☀



VR Pewter  
☀



NCS S0500-N VR Pure white  
☀



NCS S7502-B VR Anthracite grey  
☀

## USES

educational, office and waiting areas,