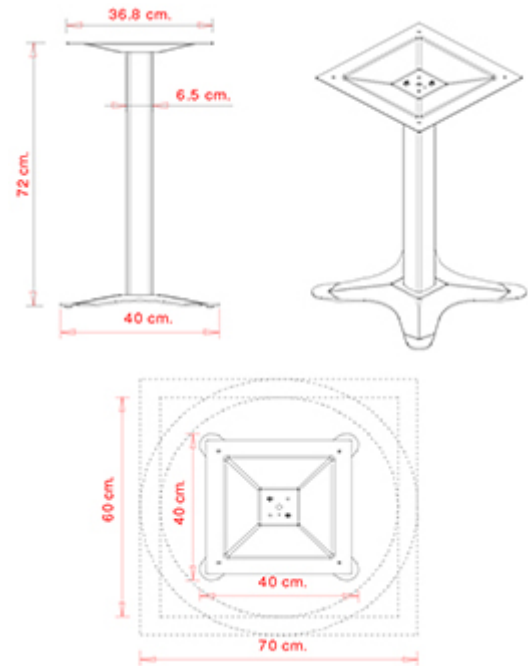


**EX 517**

EX COLLECTION:  
EX 517, EX 517R,

**TABLE TOPS:**

Ø 60 cm  
Ø 70 cm  
60x60 cm  
70x70 cm

Table frame with moulded steel base and aluminium column.  
Accessories  
Outdoor version

**WEIGHT**

9,6 kg

**PACK**0,06 m<sup>3</sup>**PIECES PER BOX**

2

**NOTE**

**Optional:** H 12 mm adjustable feet



FRAMES

AL VR PAINTED ALUMINIUM



NCS s0502-b VR Traffic white  
≡



NCS S0500-N VR Pure white  
≡



VR Pewter  
≡



NCS S4000-N VR White aluminium  
≡



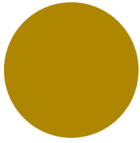
NCS S7502-B VR Anthracite grey  
≡



NCS S9000-N VR Matt Jet Black  
≡



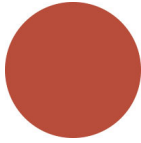
NCS S9000-N VR Jet black  
≡



NCS S3060-Y Curry



NCS S4040-R Marsala  
≡



NCS S3060-Y80R Coral red



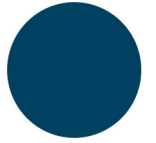
NCS S4050-B40G Water blue



NCS S7020-G50Y Olive green  
≡



NCS S8005-Y20R Brown  
≡



NCS S6030-B Capri blue  
≡

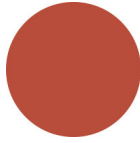
AC STEEL



NCS S4000-N VR White aluminium  
☀



NCS S9000-N VR Jet black  
☀



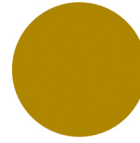
NCS S3060-Y80R Coral red  
☀



NCS S9000-N VR Matt Jet Black  
☀



VR Rough metallic bronze  
☀



NCS S3060-Y Curry  
☀



NCS S7020-G50Y Olive green  
☀



NCS S4050-B40G Water blue  
☀



NCS S6030-B Capri blue  
☀



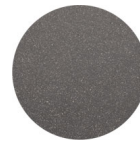
NCS S8005-Y20R Brown  
☀



NCS s0502-b VR Traffic white  
☀



NCS S4040-R Marsala  
☀



VR Pewter  
☀



NCS S0500-N VR Pure white  
☀



NCS S7502-B VR Anthracite grey  
☀

USES

coffee & restaurants, hotels, retail, outdoor,