

MT 498 T



MT COLLECTION:

MT 481, MT 481 A, MT 481 F, MT 481 A F, MT 482, MT 482 A, MT 483, MT 483 A, MT 484, MT 484 A, MT 491 Q, MT 491 A Q, MT 491 T, MT 491 A T, MT 493, MT 498 Q, MT 497, MT 497 A, MT 498 A Q, MT 498 T, MT 499 Q, MT 499 A Q, MT 499 T, MT 499 A T, MT 498 A T,



TABLE TOPS: Ø 60 cm Ø 70 cm
60x60 cm 70x70 cm

Table frame in painted steel.

WEIGHT

11,9 kg

PACK

0,05 m³

PIECES PER BOX

2

NOTE

Resources

[3ds](#)



| [dwg](#)



Optional: H 12 mm adjustable feet

FRAMES

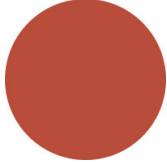
AC STEEL



NCS S4000-N VR
White aluminium
☀



NCS S9000-N VR Jet
black
☀



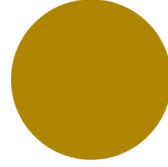
NCS S3060-Y80R
Coral red
☀



NCS S9000-N VR Matt
Jet Black
☀



VR Rough metallic
bronze
☀



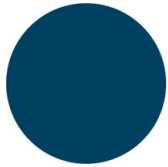
NCS S3060-Y Curry
☀



NCS S7020-G50Y
Olive green
☀



NCS S4050-B40G
Water blue
☀



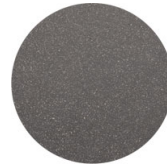
NCS S6030-B
Capri blue
☀



NCS S8005-Y20R
Brown
☀



NCS s0502-b VR
Traffic white
☀



VR Pewter
☀



NCS S0500-N VR
Pure white
☀



NCS S7502-B VR
Anthracite grey
☀

USES

coffee & restaurants, hotels, educational, entertainment, travel, office and waiting areas, retail, health care,