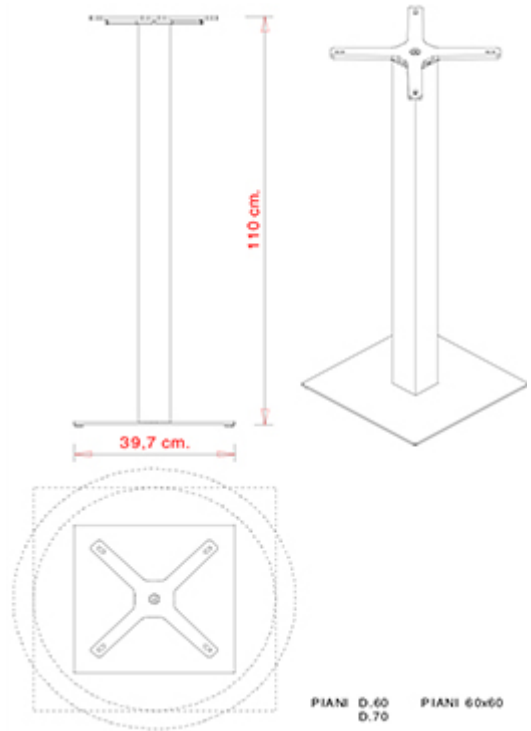
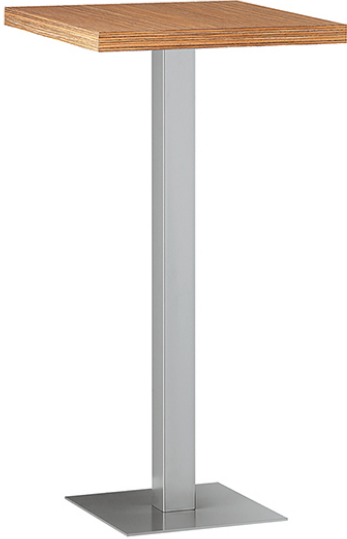


MT 483A

MT COLLECTION:

MT 481, MT 481 A, MT 481 F, MT 481 A F, MT 482, MT 482 A, MT 483, MT 483 A, MT 484, MT 484 A, MT 491 Q, MT 491 A Q, MT 491 T, MT 491 A T, MT 493, MT 498 Q, MT 497, MT 497 A, MT 498 A Q, MT 498 T, MT 499 Q, MT 499 A Q, MT 499 T, MT 499 A T, MT 498 A T,



PLATEAUX DE TABLE (CM): Ø 60 cm Ø 70 cm
60x60 cm

TABLE DESIGN:

Châssis avec colonne en tube d'acier (8x8), embase en acier. Version Haute

POIDS

15,1 kg

EMBALLAGE

0,06 m³

PIÈCES PAR CARTON

2

NOTES

Ressources

3ds



| dwg



Optionnel: Veérins réglables H 12 mm

PIÈTEMENTS

AC ACIER



NCS s0502-b VR Blanc
signalisation



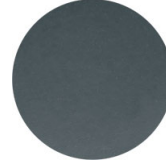
NCS S0500-N VR
Blanc pur



NCS S4000-N VR
Aluminium blanc



VR Etain



RAL 7016 Gris
anthracite



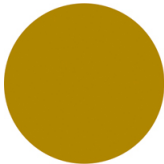
NCS S9000-N VR Noir
foncé



NCS S9000-N VR Noir
foncé opaque



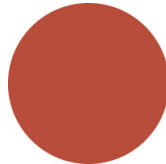
VR Bronze métallique
texturé



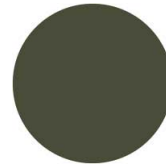
NCS S3060-Y
Jaune curry



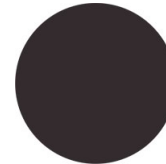
NCS S4050-B40G
Bleu d'eau



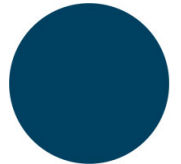
NCS S3060-Y80R
Rouge corail



NCS S7020-G50Y
Vert olive



NCS S8005-Y20R
Brun



NCS S6030-B
Bleu Capri



NCS S4040-R
Marsala



UTILISATION DANS

Cafés et restaurants, Hotellerie, Culture et éducation, Temps libre, Voyages, Bureaux, Boutiques et centre commerciaux, Maison de retraite,