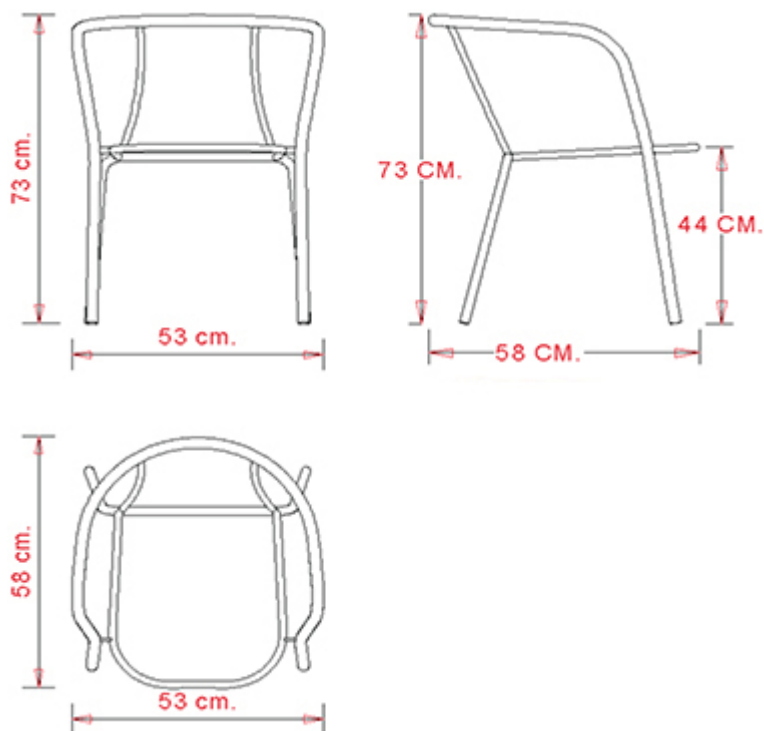


001

001 COLLECTION:
001,

**POLTRONCINA DESIGN:**

Poltroncina con telaio 4 gambe in tubo acciaio
con sedile e schienale in Xiloplast.

IMPILABILE

8

PESO

5,5 kg

IMBALLO0,32 m³**PEZZI PER SCATOLA**

4

FINITURE SEDUTE**XLP XILOPLAST**

Bianco



Nero 1

**NOTE****Risorse**

3ds

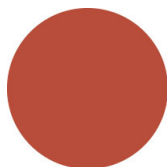


| dwg

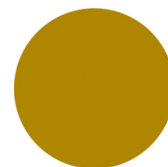
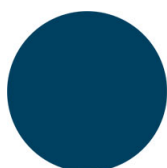
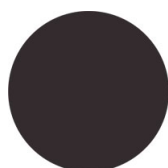
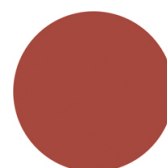
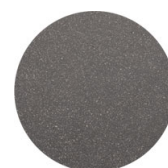


TELAJ

AC ACCIAIO

NCS S4000-N VR Alluminio
brillanteNCS S9000-N VR Nero
intensoNCS S3060-Y80R
Rosso Corallo

CR Cromato

NCS S9000-N VR Nero
intenso opacoVR Bronzo metallico
bucciatoNCS S3060-Y
Giallo curryNCS S7020-G50Y
Verde olivaNCS S4050-B40G
Blu acquaNCS S6030-B
Blu capriNCS S8005-Y20R
MarroneNCS s0502-b VR Bianco
trafficoNCS S4040-R
Marsala

VR Peltro

NCS S0500-N VR bianco
puroNCS S7502-B VR Grigio
antracite

CERTIFICAZIONI

> UNI 8584:1984 - Resistenza a fatica della struttura: 5 (20/08/98)

DESTINAZIONI D'USO

Coffee & Restaurants, Hotels, Educational, Entertainment, Outdoor,