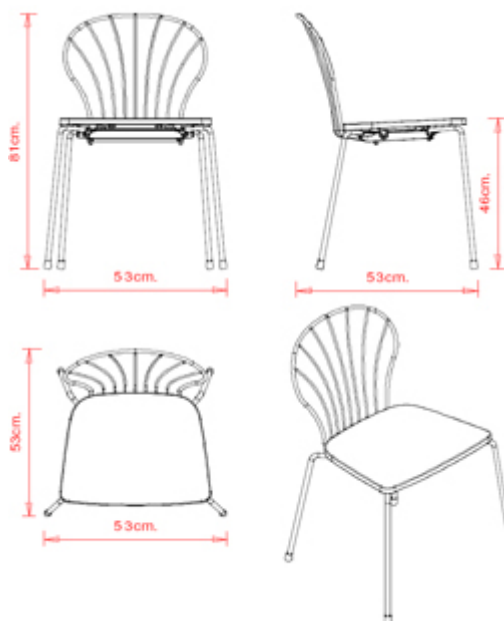
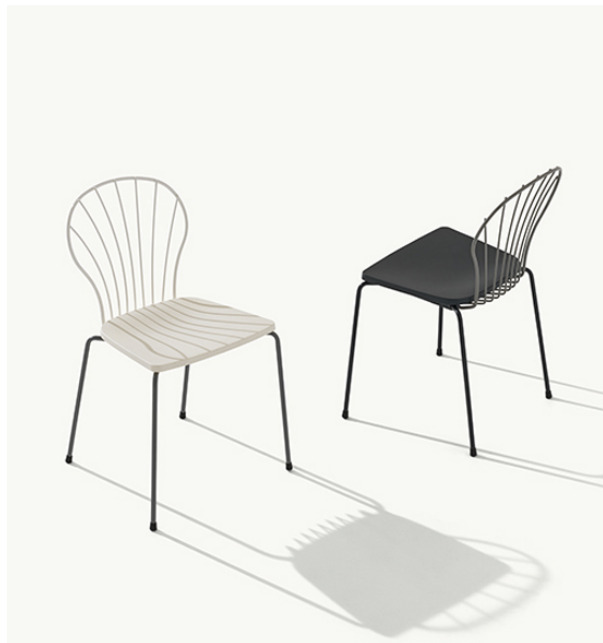


Flint 535-B

FLINT COLLECTION:

Flint 535-A, Flint 535-AM, Flint 535-B,
Flint 535-BM, Flint 549, Flint 549M,



SEDIA DESIGN:

Sedia con telaio a 4 gambe in tubo acciaio, seduta in poliammide e schienale in tondino acciaio.

IMPILABILE

4

PESO

5,3 Kg

IMBALLO

0,39 m₃

PEZZI PER SCATOLA

4

FINITURE SEDUTE

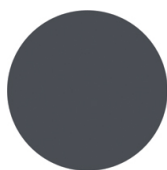
PA POLIAMMIDE



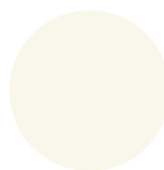
NCS S4005-Y20R
Tortora



RAL 3003
Rosso rubino
(Disponibile fino a esaurimento)



NCS S7502-B VR Grigio
antracite



NCS S0500-N
bianco puro



TELAI

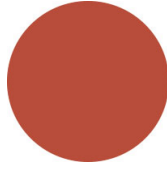
AC ACCIAIO



NCS S4000-N VR
Alluminio brillante



NCS S9000-N VR Nero
intenso



NCS S3060-Y80R
Rosso Corallo



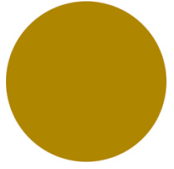
NCS S9000-N VR Nero
intenso opaco



VR Bronzo metallico
bucciato



CR Cromato



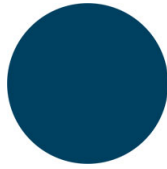
NCS S3060-Y
Giallo curry



NCS S7020-G50Y
Verde oliva



NCS S4050-B40G
Blu acqua



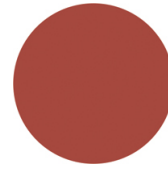
NCS S6030-B
Blu capri



NCS S8005-Y20R
Marrone



NCS s0502-b VR
Bianco traffico



NCS S4040-R
Marsala



VR Peltro



NCS S0500-N VR bianco
puro



NCS S7502-B VR Grigio
antracite



CERTIFICAZIONI

- > UNI/EN 16139:2013 - Par.4.1. Generale. Par.4.2. Cesoiamento (07/07/15)
- > UNI/EN 16139:2013 - Par.4.3. Stabilità (07/07/15) > UNI/EN 16139:2013 - Prova 1. Carico statico sedile e schienale: 2-Uso estremo (07/07/15)
- > UNI/EN 16139:2013 - Prova 2. Carico statico sul fronte anteriore: 2-Uso estremo (07/07/15)
- > UNI/EN 16139:2013 - Prova 3. Carico verticale sullo schienale: 2-Uso estremo (07/07/15)
- > UNI/EN 16139:2013 - Prova 8. Prova di fatica sedile e schienale: 2-Uso estremo (07/07/15)
- > UNI/EN 16139:2013 - Prova 9. Prova di fatica sul bordo anteriore: 2-Uso estremo (07/07/15)

DESTINAZIONI D'USO

Coffee & Restaurants, Retail, Outdoor,