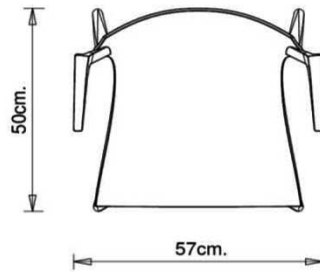
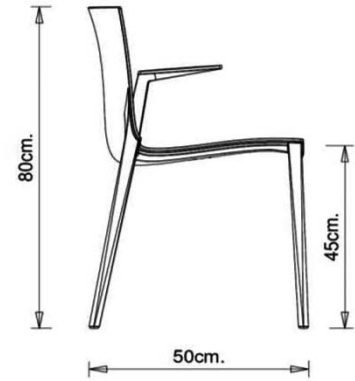
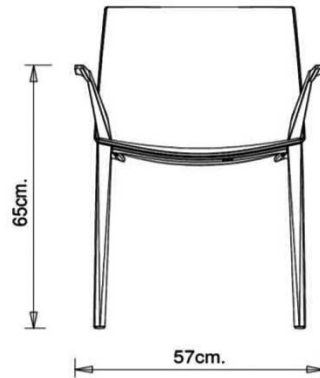


## Palau 1021

PALAU COLLECTION:  
Palau 1020, Palau 1021,



### SEDIA DESIGN:

Sedia monoblocco con braccioli in polipropilene, stampata a iniezione con tecnologia air moulding.

**IMPILABILE**

6

**PESO**

4,1 Kg

**IMBALLO**

0,36 m<sup>3</sup>

**PEZZI PER SCATOLA**

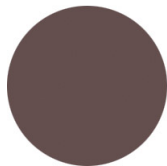
4

## FINITURE SEDUTE

### PP POLIPROPILENE



NCS S9000-N  
Nero intenso



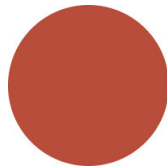
NCS S6502-R  
Argilla



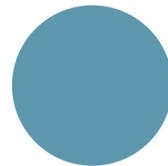
NCS S7020-G50Y  
Verde oliva



NCS S0500-N  
bianco puro



NCS S3060-Y80R  
Rosso Corallo



NCS S4020-B10G  
Blu polvere



## NOTE

### Risorse

[3ds](#)



| [dwg](#)



## DESTINAZIONI D'USO

Coffee & Restaurants, Travel, Retail, Outdoor,