

Uni 565

UNI COLLECTION:

Uni 550, Uni 378, Uni 550M, Uni 378B, Uni 378M, Uni 378B-M, Uni 380, Uni 380M, Uni 380B, Uni 380B-M, Uni 562, Uni 562M, Uni 386, Uni 386M, Uni 602, Uni 602M, Uni 551, Uni 551M, Uni 552, Uni 552M, Uni 552-G, Uni 552M-G, Uni 552T, Uni 552G-T, Uni 558-DP, Uni 558M-DP, Uni 558-DR, Uni 553, Uni 558M-DR, Uni 553M, Uni 577, Uni 577M, Trolley 536, Uni 544, Uni 391, Uni 565, Uni 391M, Uni 393, Uni 393M, Uni 220, Uni 221, Uni 223, Uni 222,



SEDIA DESIGN:

Sedia con telaio da mensa in tubo acciaio. Seduta in polipropilene.

PESO

5,2 kg

IMBALLO

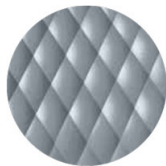
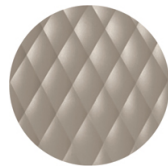
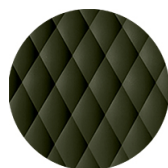
0,28 m³

PEZZI PER SCATOLA

2

FINITURE SEDUTE

PP POLIPROPILENE

NCS S4005-B20G
Grigio vaioNCS S4020-B10G
Blu polvereNCS S6502-R
ArgillaNCS S4005-Y50R
TortoraNCS S3010-G50Y
PistacchioNCS S7502-B
Grigio antraciteRAL 9005
Nero intensoNCS S3060-Y80R
Rosso CoralloNCS S0502-B
Bianco trafficoNCS S7020-G50Y
Verde oliva

NOTE

Risorse

3ds



| dwg



Note

La scocca di colore **Verde oliva** (NCS S7020-G50Y), è realizzata in **polipropilene riciclato al 100%** da scarto industriale.

TELAI

AC ACCIAIO



VR Peltro
☀



NCS S0500-N VR
bianco puro
☀



NCS S7502-B VR
Grigio antracite
☀



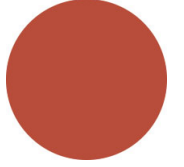
NCS S4000-N VR
Alluminio brillante
☀



NCS S9000-N VR Nero
intenso
☀



CR Cromato



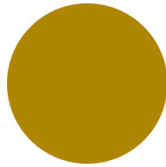
NCS S3060-Y80R
Rosso Corallo
☀



NCS S9000-N VR Nero
intenso opaco
☀



VR Bronzo metallico
bucciato
☀



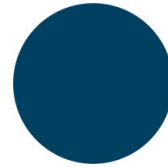
NCS S3060-Y
Giallo curry
☀



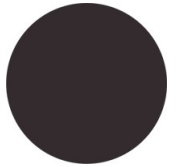
NCS S7020-G50Y
Verde oliva
☀



NCS S4050-B40G
Blu acqua
☀



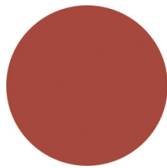
NCS S6030-B
Blu capri
☀



NCS S8005-Y20R
Marrone
☀



NCS s0502-b VR Bianco
traffico
☀



NCS S4040-R
Marsala
☀

DESTINAZIONI D'USO

Hotels, Educational, Entertainment,