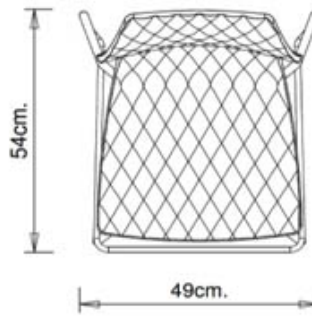
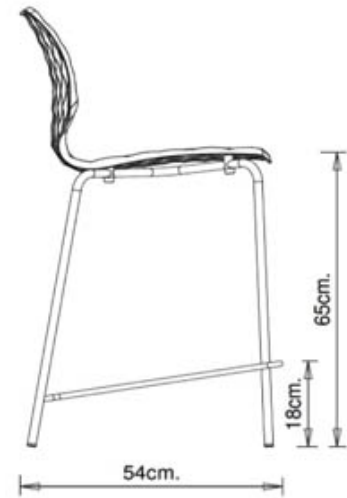
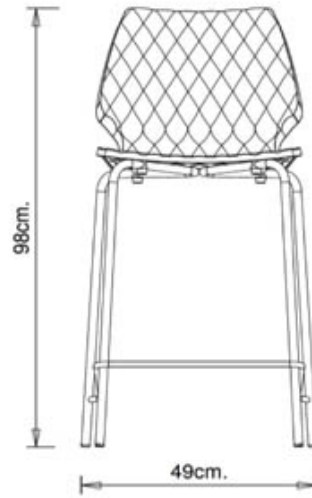


## Uni 378B

### UNI COLLECTION:

Uni 550, Uni 378, Uni 550M, Uni 378B, Uni 378M, Uni 378B-M, Uni 380, Uni 380M, Uni 380B, Uni 380B-M, Uni 562, Uni 562M, Uni 386, Uni 386M, Uni 602, Uni 602M, Uni 551, Uni 551M, Uni 552, Uni 552M, Uni 552-G, Uni 552M-G, Uni 552T, Uni 552G-T, Uni 558-DP, Uni 558M-DP, Uni 558-DR, Uni 553, Uni 558M-DR, Uni 553M, Uni 577, Uni 577M, Trolley 536, Uni 544, Uni 391, Uni 565, Uni 391M, Uni 393, Uni 393M, Uni 220, Uni 221, Uni 223, Uni 222,



### SGABELLO DESIGN:

Sgabello con telaio a 4 gambe in tubo acciaio. Seduta in polipropilene. Versione seduta H 65 cm.

### IMPILABILE

4

### PESO

6,5 Kg

### IMBALLO

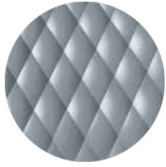
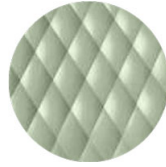
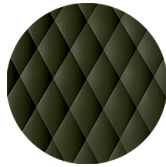
0,46 m<sup>3</sup>

### PEZZI PER SCATOLA

4

## FINITURE SEDUTE

## PP POLIPROPILENE

NCS S4005-B20G  
Grigio vaioNCS S4020-B10G  
Blu polvereNCS S6502-R  
ArgillaNCS S4005-Y50R  
TortoraNCS S3010-G50Y  
PistacchioNCS S7502-B  
Grigio antraciteRAL 9005  
Nero intensoNCS S3060-Y80R  
Rosso CoralloNCS S0502-B  
Bianco trafficoNCS S3060-Y  
Giallo curryNCS S7020-G50Y  
Verde oliva

## NOTE

## Risorse

3ds



| dwg



## Note

La scocca di colore **Verde oliva** (NCS S7020-G50Y), è realizzata in **polipropilene riciclato al 100%** da scarto industriale.

## TELAI

### AC ACCIAIO



VR Peltro  
☀



NCS S0500-N VR  
bianco puro  
☀



NCS S7502-B VR  
Grigio antracite  
☀



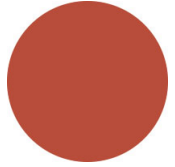
NCS S4000-N VR  
Alluminio brillante  
☀



NCS S9000-N VR Nero  
intenso  
☀



CR Cromato



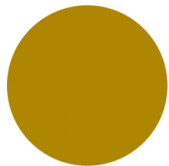
NCS S3060-Y80R  
Rosso Corallo  
☀



NCS S9000-N VR Nero  
intenso opaco  
☀



VR Bronzo metallico  
bucciato  
☀



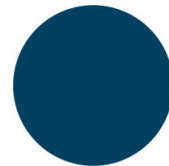
NCS S3060-Y  
Giallo curry  
☀



NCS S7020-G50Y  
Verde oliva  
☀



NCS S4050-B40G  
Blu acqua  
☀



NCS S6030-B  
Blu capri  
☀



NCS S8005-Y20R  
Marrone  
☀



NCS s0502-b VR Bianco  
traffico  
☀



NCS S4040-R  
Marsala  
☀

## DESTINAZIONI D'USO

Coffee & Restaurants, Hotels, Educational, Entertainment, Office and Waiting Areas, Retail, Outdoor,