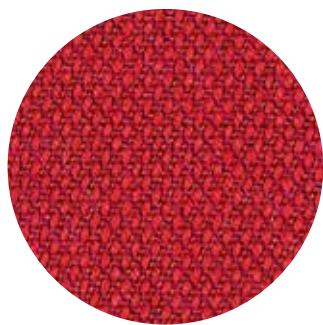


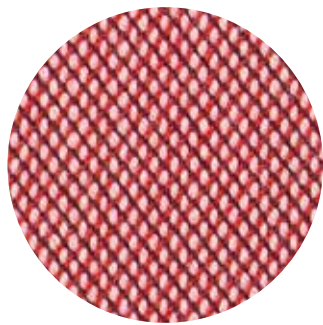
Steelcut  
trio 3  
**Kvadrat**



515



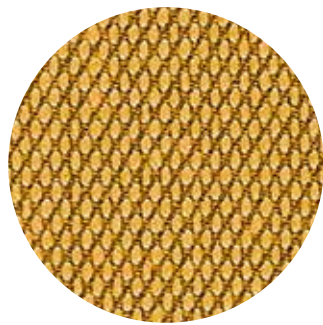
666



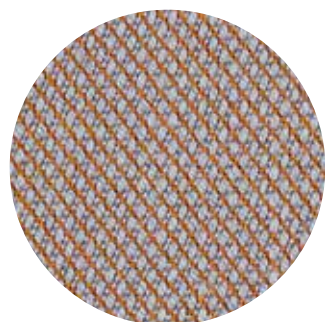
636



645



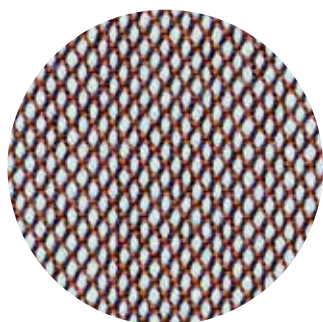
453



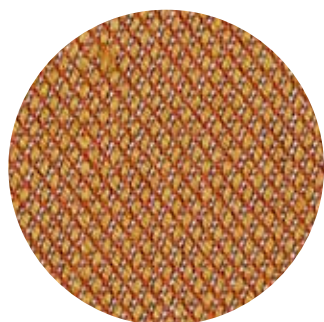
426



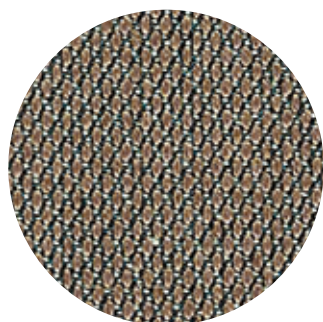
576



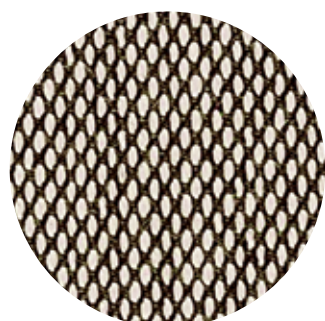
416



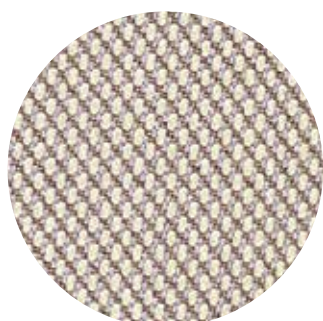
436



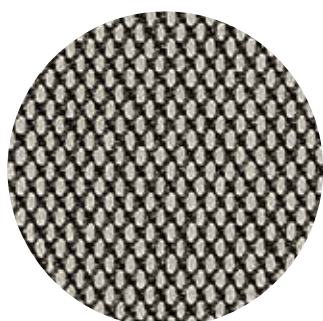
253



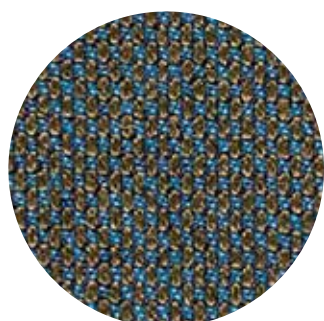
124



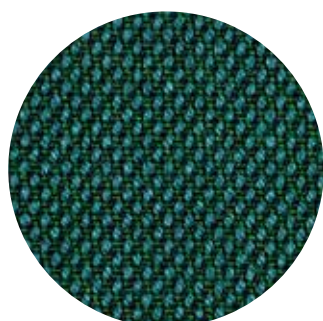
205



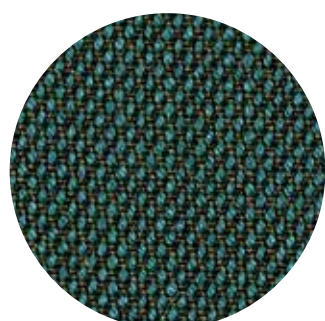
133



883



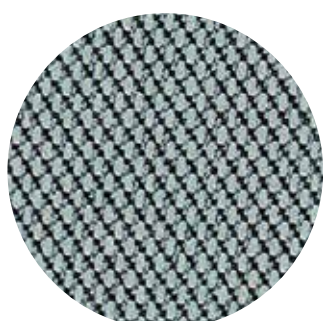
976



996



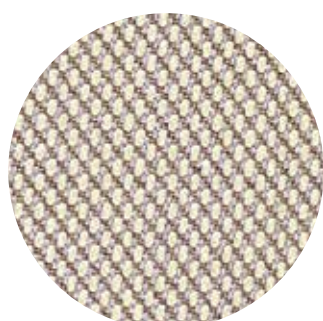
276



713



776



213

**composizione /  
composition:**

90% Wool, 10% Nylon

**prove /  
tests:**

Abrasion resistance rubs EN ISO 12947-2: 100.000 Martindale; Pilling EN ISO 12945-2: 4; Colour fastness to light UNI EN ISO 105-B02: 5/7 ; Fire resistance: EN 1021 Part 1&2, BS 5852 Part 1, DIN 4102 B2, ONORM B1/Q1, NF D 60-013, UNI 9175 Classe 1.IM, US Cal. Bull. 117-2013, AS/NZS 3837 Class 2, IMO FTP Code 2010:Part 8, Crib 5 and SN 198 898 5.3 with treatment. AS/NZS 1530.3 NF PA 260.

**note tecniche /  
technical notes:**

**1** Determinati coloranti di vestiti o di accessori (es. jeans denim) possono migrare verso i colori più chiari. Questo fenomeno è incrementato dall'umidità e dalla temperatura ed è irreversibile. Et al. non si assume nessuna responsabilità per il trasferimento di colorante causato da contaminante esterno e per le possibili macchie permanenti causate da questo fenomeno. / Certain clothing or accessories dyes (such as those used on denim jeans) may migrate to lighter colors. This phenomenon is increased by humidity and temperature and is irreversible. Et al. will not assume responsibility for dye transfer caused by external contaminants and the possible permanent staining caused by this phenomenon.

**2** Sono ammesse leggere variazioni di colore tra differenti lotti di produzione dei tessuti. / Slight color differences may occur between different production batches.

**3** I colori dei tessuti possono variare rispetto ai riferimenti cromatici forniti nel presente documento a causa delle inevitabili differenze tra i materiali reali e la riproduzione tipografica. Per ulteriori informazioni si prega di contattare l'ufficio commerciale prima dell'ordine. / Fabric colors may vary from the color references provided in this document due to the inevitable differences between real materials and typographical reproduction. For more information please contact the sales office.

**uso e manutenzione**

**- pulizia /  
use and maintenance  
- cleaning:**

Utilizzare smacchiatori a secco. / Use a dry stain remover.