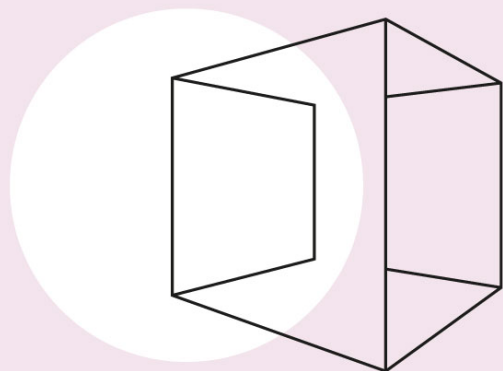


# et al. bulletin

---

**Maison  
&Objet**

17-21/01/2020  
Paris – Pad 6  
stand O102 P101



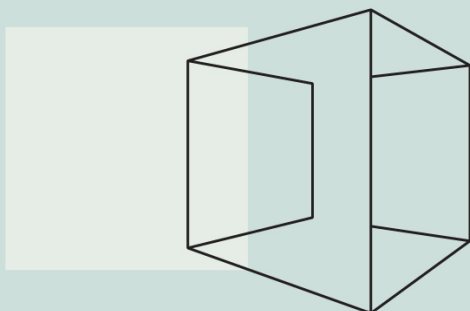
**Maison&Objet 2020**

17-21 gennaio 2020  
Parigi - Pad 6 Stand O102-P101

17-21 January 2020  
Paris- Pav 6 Stand O102-P101

**Sigep**

18-22/01/2020  
Rimini – Pad C1  
stand 094-054



**Sigep 2020**

18-22 gennaio 2020  
Rimini - Pad C1 Stand 094-054

18-22 January 2020  
Rimini - Pav C1 Stand 094-054



**A cena da Et al.**

Dalla cultura del fare a quella dello  
stare insieme.

**>Scopri di più**

**Dinner at Et al.**

The art of getting together.

**>Discover more**

chiusura  
natalizia

christmas  
holidays

I nostri uffici rimarranno chiusi  
dal **21 dicembre 2019**  
al **6 gennaio 2020** compresi.  
Riapriremo  
martedì **7 gennaio 2020**.  
Buone Feste!

Our offices will be closed from  
**December 21<sup>st</sup>, 2019**  
to **January 6<sup>th</sup>, 2020**, included.  
We will re-open on Tuesday,  
**January 7<sup>th</sup>, 2020**.  
Happy Holidays!

## Chiusura natalizia

I nostri uffici rimarranno chiusi dal 21 dicembre 2019 al 6 gennaio 2020 compresi.

Riapriremo martedì 7 gennaio 2020.

## Christmas holidays

Our offices will be closed from December 21st, 2019 to January 6th, 2020, included. We will re-open on Tuesday, January 7th, 2020.

---

**www.et-al.it**

Italia +39 0721 203607 Export +39 0721 203601  
commerciale@et-al.it - export@et-al.it



---

[Unsubscribe](#) | [Cancella iscrizione](#)

[Disiscriviti](#) | [Unsubscribe](#)