

et al.

finiture

finishes

finitions

oberflächen

acabados

indice / index / indice / index / índice

finiture sedute / seating finishes finitions des sièges sitzfertigungen acabados asientos (pag. 03)	materiale plastico / plastic material / matériel plastic / kunststoff / material plástico (pag. 04)
	poliammide / polyamide / polyamide / polyamid / poliamida (pag. 04)
	polipropilene / polypropylene / polypropylène / polypropylen / polipropileno (pag. 04-10)
	polivinilcloruro / polyvinyl chloride / polychlorure de vinyle / polyvinylchlorid / cloruro de polivinilo (pag. 12)
	acciaio / steel / acier / stahl / acero (pag. 12)
	legno / wood / bois / holz / madera (pag. 13)
	tessuti / fabrics / tissus / stoffe / tejidos (pag. 13-34)
	acciaio / steel / acier / stahl / acero (pag. 39-40)
finiture telai frames finishes finitions piètements gestellfertigungen acabados estructuras (pag. 38)	acciaio inox AISI 304 18/10 / AISI 304 18/10 stainless steel / acier inoxydable AISI 304 18/10 / AISI 304 18/10 Edelstahl / acero inoxidable AISI 304 18/10 (pag. 40)
	alluminio / aluminium / aluminium / aluminium / aluminio (pag. 41)
	alluminio anodizzato / anodized aluminium / aluminium anodisé / eloxiertes aluminium / aluminio anodizado (pag. 41)
	alluminio lucidato / polished aluminium / aluminium brillant / poliertes aluminium / aluminio pulido (pag. 41)
	alluminio verniciato / painted aluminium / aluminium verni / lackiert aluminium / aluminio barnizado (pag. 42-43)
	legno / wood / bois / holz / madera (pag. 44-45)
	laminato / laminate / stratifié / laminat / laminado (pag. 46)
	stratificato HPL / HPL solid laminate / stratifié HPL / HPL compact platte / estratificado HPL (pag. 47-50)
finiture piani tavoli table tops finishes finitions plateaux de table tischplattenfertigungen acabados por sobres de mesas (pag. 47)	laminato / laminate / stratifié / laminat / laminado (pag. 51-53)
	silestone (pag. 54)
	linoleum (pag. 55)
	alluminio / aluminium / aluminium / aluminium / aluminio (pag. 56)
	uso e manutenzione - pulizia / use and maintenance - cleaning / utilisation et entretien - nettoyage / gebrauch und wartung -reinigung / uso y mantenimiento - limpieza (pag. 57-60)
	legenda / index / légende / zeichenerklärung / leyenda (pag. 61)

finiture sedute
seating finishes
finitions des sièges
sitzfertigungen
acabados asientos

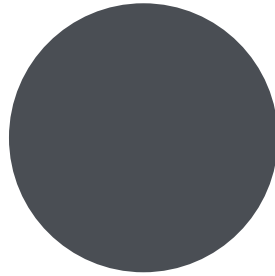
materiale plastico / plastic material / matériel plastic / kunststoff / material plástico

PA

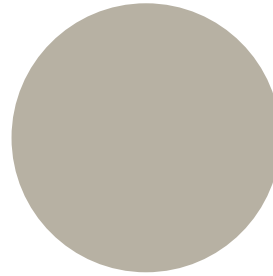
poliammide / polyamide / polyamide / polyamid / poliamida



flint



NCS S7502-B
Grigio antracite
Anthracite grey
Gris anthracite
Anthrazitgrau
Gris antracita



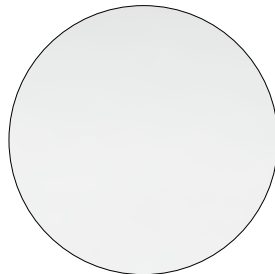
NCS S4005-Y20R
Tortora
Turtle-dove
Gris tourterelle
Taubengrau
Tortora

PP

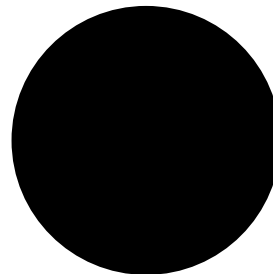
polipropilene / polypropylene / polypropylène / polypropylen /
polipropileno



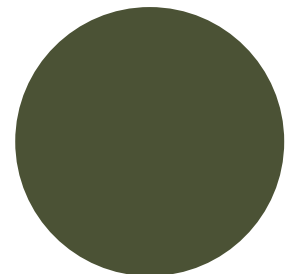
classy



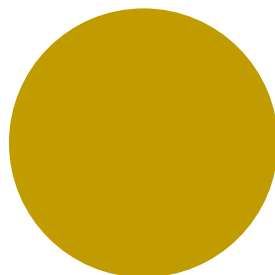
NCS S0502-B
Bianco traffico
Traffic white
Blanc signalisation
Verkehrsweiß
Blanco tráfico



NCS S9000-N
Nero intenso
Jet black
Noir foncé
Tiefschwarz
Negro intenso



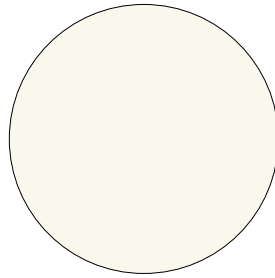
NCS S7020-G50Y
Verde oliva
Olive green
Vert olive
Olivgrün
Verde aceituna



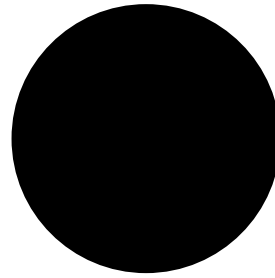
NCS S3060-Y
Giallo curry
Curry
Jaune curry
Currygelb
Amarillo curry

[back to index](#)

cuba

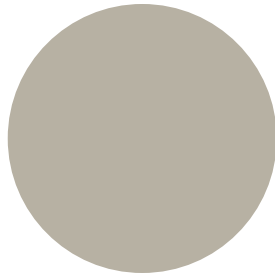


NCS S0500-N
Bianco puro
Pure white
Blanc pur
Reinweiß
Blanco puro

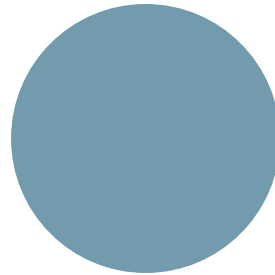


NCS S9000-N
Nero intenso
Jet black
Noir foncé
Tiefschwarz
Negro intenso

maré



NCS S4005-Y20R
Tortora
Turtle-dove
Gris tourterelle
Taubengrau
Tortora

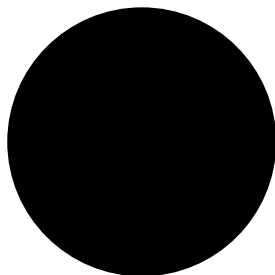


NCS S4020-B10G
Blu polvere
Dusty blue
Bleu poudre
Stauben Blau
Azúl polvo

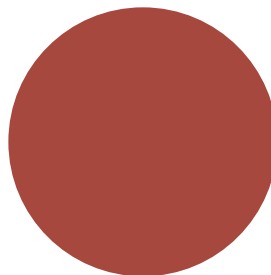
dunk 1191, 1191N, 1192, 1192N, 1193, 1193N, 1195, 1195N, 1196, 1196N
scocca in versione chiusa / shell in closed version / coque en version
pleine / Schale in geschlossener Ausführung / cuerpo en versión integral



eccetto / except
/ sauf / außer /
excepto 1191N,
1192N, 1193N,
1194N, 1195N,
1196N

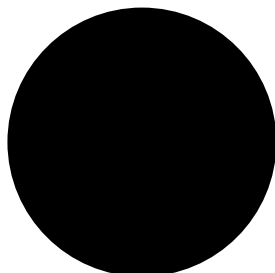


NCS S9000-N
Nero intenso
Jet black
Noir foncé
Tiefschwarz
Negro intenso

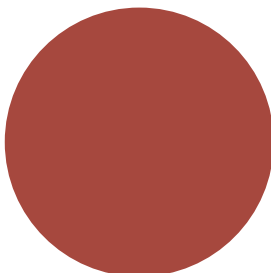


NCS S4040-R
Marsala
Marsala
Marsala
Marsala
Marsala

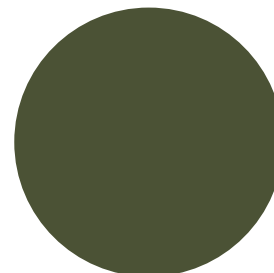
dunk 1190
scocca in versione aperta / shell in open version / coque en version ouverte /
Schale in offener Ausführung / cuerpo en versión abierta



NCS S9000-N
Nero intenso
Jet black
Noir foncé
Tiefschwarz
Negro intenso



NCS S4040-R
Marsala
Marsala
Marsala
Marsala
Marsala



NCS S7020-G50Y
Verde oliva
Olive green
Vert olive
Olivgrün
Verde oliva

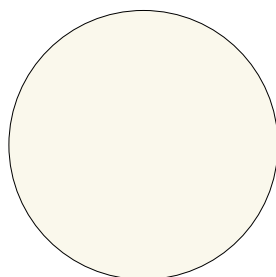
La scocca Dunk color marsala è realizzata con materiale riciclato. La percentuale va dal 65% all'85% di componente da riciclo. La superficie può presentare una leggera puntinatura, proprio perché il materiale da riciclo può contenere delle impurità. Questa puntinatura può essere più o meno evidente, in relazione al lotto di materiale.

The marsala-coloured Dunk shell is made of recycled material. The percentage ranges from 65% to 85% recycled component. The surface may be slightly speckled because the recycled material may contain impurities. This pitting may be more or less noticeable, depending on the batch of material.

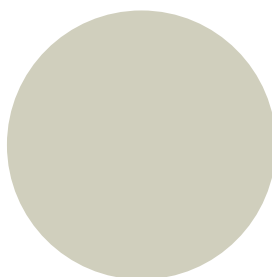
nassau



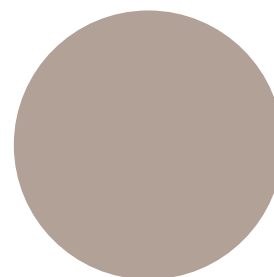
*Non disponibile
per art.537
Not available for 537
Non disponible pour
art. 537
Nicht verfügbar für
Art. 537
No disponible para
art. 537



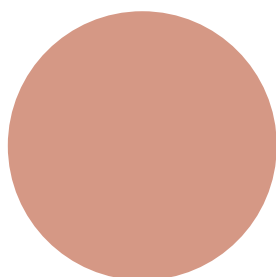
NCS S0500-N
Bianco puro
Pure white
Blanc pur
Reinweiß
Blanco puro



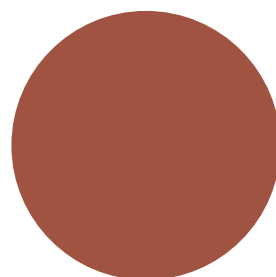
*NCS S 2005-G90Y
Bianco canapa
Hemp white
Blanc chanvre
Hanfweiß
Blanco cáñamo



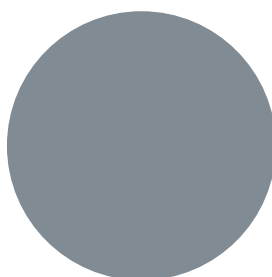
NCS S4005-Y50R
Tortora
Turtle-dove
Gris tourterelle
Taubengrau
Tortora



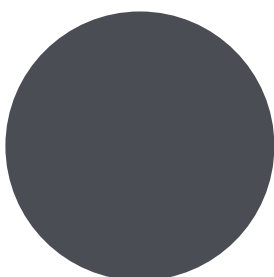
* NCS S 3020-Y70R
Rosa Cipria
Powder pink
Rose poudré
Puderrosa
Rosa pulvo



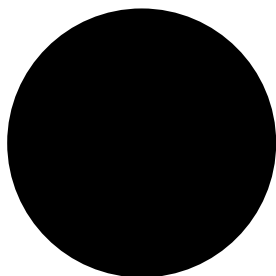
*NCS S 5030-Y70R
Terracotta
Terracotta
Terracotta
Terrakotta
Terracota



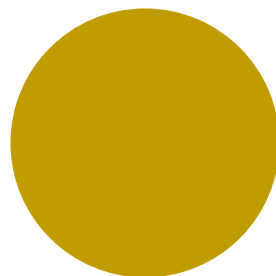
*NCS S4005-B20G
Grigio vaio
Squirrel grey
Gris petit-gris
Fehgrau
Gris ardilla



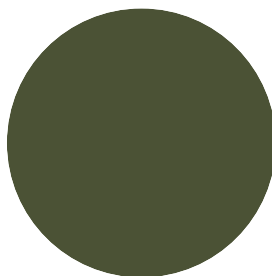
NCS S7502-B
Grigio antracite
Anthracite grey
Gris anthracite
Anthrazitgrau
Gris antracita



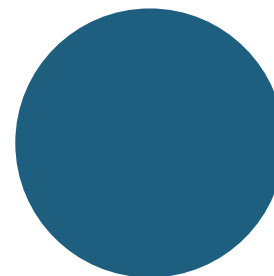
NCS S9000-N
Nero intenso
Jet black
Noir foncé
Tiefschwarz
Negro intenso



NCS S3060-Y
Giallo curry
Curry
Jaune curry
Currygelb
Amarillo curry



NCS S7020-G50Y
Verde oliva
Olive green
Vert olive
Olivgrün
Verde oliva



NCS S6030-B
Blu capri
Capri blue
Bleu capri
Blau Capri
Azúl capri

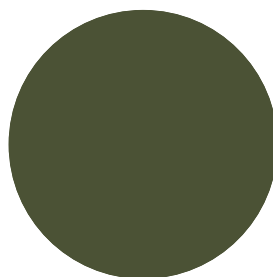
La scocca Nassau color verde oliva è realizzata in polipropilene riciclato al 100% da scarto industriale. La superficie può presentare una leggera puntinatura, proprio perché il materiale da riciclo può contenere delle impurità. Questa puntinatura può essere più o meno evidente, in relazione al lotto di materiale.

The olive green Nassau shell is made of 100% recycled polypropylene from industrial waste. The surface may be slightly speckled because the recycled material may contain impurities. This pitting may be more or less noticeable, depending on the batch of material.

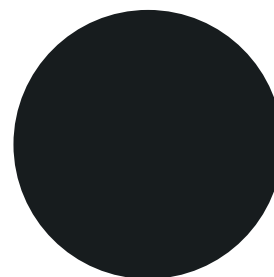
palau



NCS S0500-N
Bianco puro
Pure white
Blanc pur
Reinweiß
Blanco puro



NCS S7020-G50Y
Verde oliva
Olive green
Vert olive
Olivgrün
Verde oliva



NCS S9000-N
Nero intenso
Jet black
Noir foncé
Tiefschwarz
Negro intenso

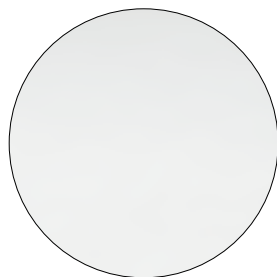
Le sedie Palau possono essere color Bianco puro, Verde oliva e Nero intenso; le sedie con braccioli Palau possono essere solo color Bianco puro e Verde oliva.

Palau chairs can be Pure white, Olive Green and Jet black colours; Palau armchairs can be Pure white and Olive green only.

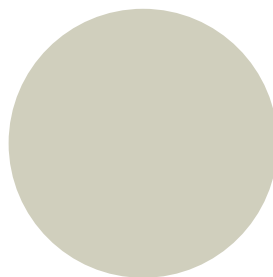
snap



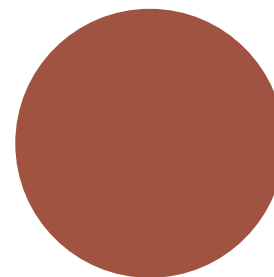
*Non disponibile per art.1102
Not available for 1102
Non disponible pour art. 1102
Nicht verfügbar für Art. 1102
No disponible para art. 1102



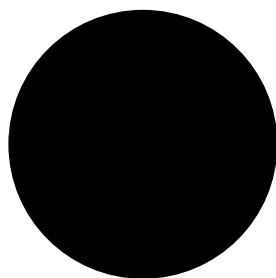
NCS S0502-B
Bianco traffico
Traffic white
Blanc signalisation
Verkehrsweiß
Blanco tráfico



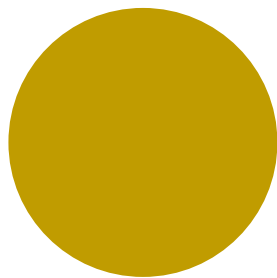
*NCS S 2005-G90Y
Bianco canapa
Hemp white
Blanc chanvre
Hanfweiß
Blanco cáñamo



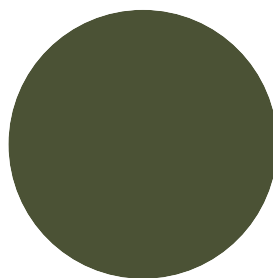
*S 5030-Y70R
Terracotta
Terracotta
Terracotta
Terracotta
Terracota



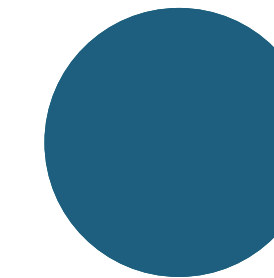
NCS S9000-N
Nero intenso
Jet black
Noir foncé
Tiefschwarz
Negro intenso



*NCS S3060-Y
Giallo curry
Curry
Jaune curry
Currygelb
Amarillo curry



NCS S7020-G50Y
Verde oliva
Olive green
Vert olive
Olivgrün
Verde oliva



NCS S6030-B
Blu capri
Capri blue
Bleu capri
Blau Capri
Azúl capri

Le scocche Snap color verde oliva sono realizzate in polipropilene riciclato al 100% da scarto industriale. La superficie può presentare una leggera puntinatura, proprio perché il materiale da riciclo può contenere delle impurità. Questa puntinatura può essere più o meno evidente, in relazione al lotto di materiale.

The olive green Snap shells are made of 100% recycled polypropylene from industrial waste. The surface may be slightly speckled because the recycled material may contain impurities. This pitting may be more or less noticeable, depending on the batch of material.

[back to index](#)



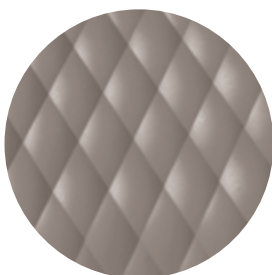
NCS S0502-B
Bianco traffico
Traffic white
Blanc signalisation
Verkehrsweiß
Blanco tráfico



NCS S 2005-G90Y
Bianco canapa
Hemp white
Blanc chanvre
Hanfweiß
Blanco cáñamo



NCS S4005-Y50R
Tortora
Turtle-dove
Gris tourterelle
Taubengrau
Tortora



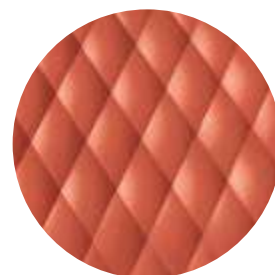
NCS S6502-R
Argilla
Clay
Argile
Ton
Arcilla



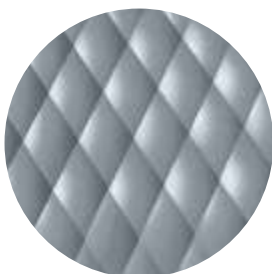
NCS S 3020-Y70R
Rosa Cipria
Powder pink
Rose poudré
Puderosa
Rosa pulvo



NCS S 5030-Y70R
Terracotta
Terracotta
Terracotta
Terrakotta
Terracota



NCS S3060-Y80R
Rosso corallo
Coral red
Rouge corail
Korallenrot
Rojo coral



NCS S4005-B20G
Grigio vaio
Squirrel grey
Gris petit-gris
Fehgrau
Gris ardilla



NCS S7502-B
Grigio antracite
Anthracite grey
Gris anthracite
Anthrazitgrau
Gris antracita



NCS S9000-N
Nero intenso
Jet black
Noir foncé
Tiefschwarz
Negro intenso



NCS S3060-Y
Giallo curry
Curry
Jaune curry
Currygelb
Amarillo curry

La scocca Uni di colore verde oliva è realizzata in polipropilene riciclato al 100% da scarto industriale. La superficie può presentare una leggera puntinatura, proprio perché il materiale da riciclo può contenere delle impurità. Questa puntinatura può essere più o meno evidente, in relazione al lotto di materiale.

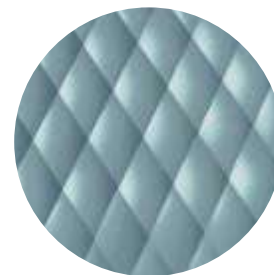
The olive green Uni shell is made of 100% recycled polypropylene from industrial waste. The surface may be slightly speckled because the recycled material may contain impurities. This pitting may be more or less noticeable, depending on the batch of material.



NCS S3010-G50Y
Pistacchio
Pistachio
Pistache
Pistazie
Pistacho



NCS S7020-G50Y
Verde oliva
Olive green
Vert olive
Olivgrün
Verde oliva



NCS S4020-B10G
Blu polvere
Dusty blue
Bleu poudre
Stauben Blau
Azúl polvo

La scocca Uni di colore verde oliva è realizzata in polipropilene riciclato al 100% da scarto industriale. La superficie può presentare una leggera puntinatura, proprio perché il materiale da riciclo può contenere delle impurità. Questa puntinatura può essere più o meno evidente, in relazione al lotto di materiale.

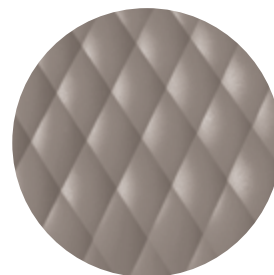
The olive green Uni shell is made of 100% recycled polypropylene from industrial waste. The surface may be slightly speckled because the recycled material may contain impurities. This pitting may be more or less noticeable, depending on the batch of material.



NCS S0502-B
Bianco traffico
Traffic white
Blanc signalisation
Verkehrsweiß
Blanco tráfico



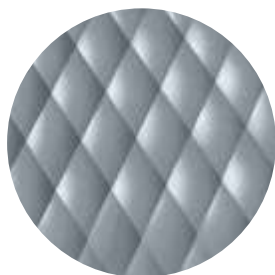
NCS S4005-Y50R
Tortora
Turtle-dove
Gris tourterelle
Taubengrau
Tortora



NCS S6502-R
Argilla
Clay
Argile
Ton
Arcilla



NCS S3060-Y80R
Rosso corallo
Coral red
Rouge corail
Korallenrot
Rojo coral



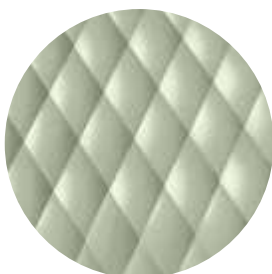
NCS S4005-B20G
Grigio vaio
Squirrel grey
Gris petit-gris
Fehgrau
Gris ardilla



NCS S7502-B
Grigio antracite
Anthracite grey
Gris anthracite
Anthrazitgrau
Gris antracita



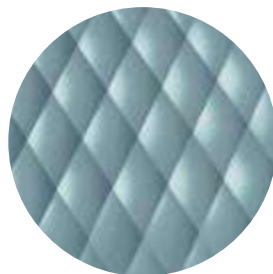
NCS S9000-N
Nero intenso
Jet black
Noir foncé
Tiefschwarz
Negro intenso



NCS S3010-G50Y
Pistacchio
Pistachio
Pistache
Pistazie
Pistacho



NCS S7020-G50Y
Verde oliva
Olive green
Vert olive
Olivgrün
Verde oliva



NCS S4020-B10G
Blu polvere
Dusty blue
Bleu poudre
Stauben Blau
Azúl polvo

La scocca Uni-ka di colore verde oliva è realizzata in polipropilene riciclato al 100% da scarto industriale. La superficie può presentare una leggera puntinatura, proprio perché il materiale da riciclo può contenere delle impurità. Questa puntinatura può essere più o meno evidente, in relazione al lotto di materiale.

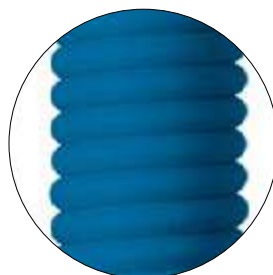
The olive green Uni-ka shell is made of 100% recycled polypropylene from industrial waste. The surface may be slightly speckled because the recycled material may contain impurities. This pitting may be more or less noticeable, depending on the batch of material.

PVC polivinilcloruro / polyvinyl chloride / polychlorure de vinyle / polyvinylchlorid /cloruro de polivinilo

001



Azzurro anice chiaro gofrato
Embossed anise light blue
Bleu anis clair texturé
Gaufriertes helles anisblau
Azul anis claro gofrado



Blu
Blue
Bleu
Blau
Azul



Mattone
Brick
Brique
Ziegerlot
Rojo ladrillo



Rosa magenta gofrato
Embossed magenta
Bleu anis clair texturé
Gaufriertes magenta rosa
Rosa magenta gofrado



Rosso
Red
Rouge
Rot
Rojo



Verde militare gofrato
Embossed army green
Vert militaire texturé
Gaufriertes militaergruen
Verde militar gofrado

acciaio / steel / acier / stahl / acero

AC

Per finiture Shade vedi colori disponibili a p. 38
For Shade finishes, see available colours, p. 38
Pour les finitions de Shade couleurs disponibles à la p. 38
Für Shade siehe Farben auf S. 38
Para acabados Shade ver los colores disponibles en la p. 38

LE

hull

finitura gofrata
embossed finish
finition gofrée
geprägte Ausführung
acabado gofrado



Faggio tinto grigio chiaro / Grey stained beech wood / Hêtre teinté gris / Buche Grau gefärbt / Haya tenida gris



Faggio tinto miele / Honey stained beech wood / Hêtre teinté miel / Buche Honig gefärbt / Haya tenida miel



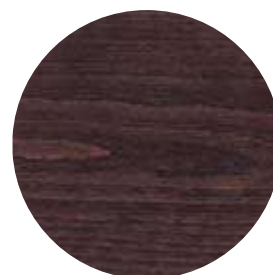
Faggio tinto castano / Chestnut stained beech wood / Hêtre teinté châtaigne / Buche Kastanie gefärbt / Haya tenida castaño



Faggio tinto rovere / Oak stained beech wood / Hêtre teinté chêne / Buche Eiche gefärbt / Haya tenida roble



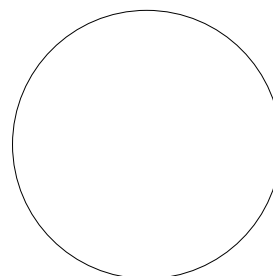
Faggio tinto noce canaletto / Canaletto Walnut stained beech wood / Hêtre teinté noyer canaletto / Buche Nussbaum Canaletto gefärbt / Haya tenida nogal Canaletto



Faggio tinto bruno / Dark brown stained beech wood / Hêtre teinté brun / Buche Dunkel braun gefärbt / Haya tenida pardo



Faggio tinto nero / Black stained beech wood / Hêtre teinté noir / Buche Schwarz gefärbt / Haya tenida negro



Faggio tinto campione* / Beech wood, stained according to sample / Hêtre teinté selon échantillon / Kundenmuster gefärbt / Haya tenida según muestra

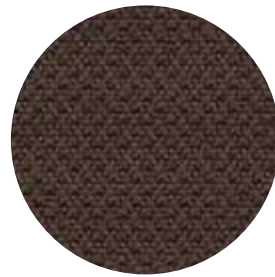
*Ordine minimo 10 pz / Minimum order 10 pcs / Minimum de commande 10 pièces / Mindestbestell 10 Stück / Minimo de compra 10 piezas

TE cat. **a**

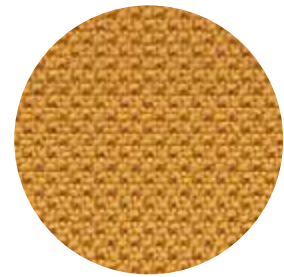
alba



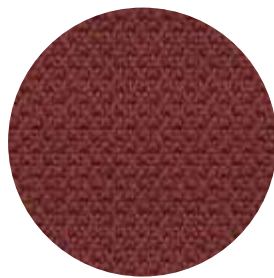
1011



2036



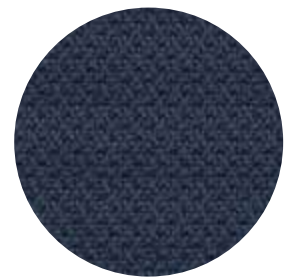
3005



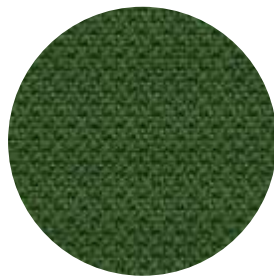
4007



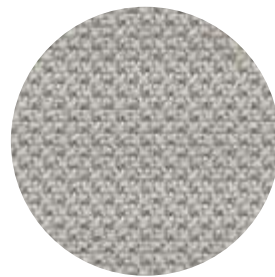
5004



6098



7029



8078

cat. a

aragon



01 ash



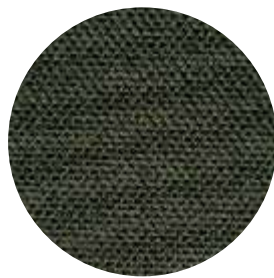
02 beige



03 black



04 brown



05 forest



06 light grey



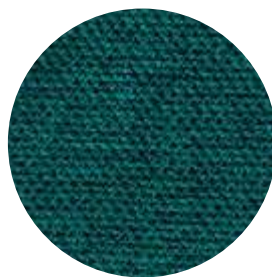
07 mostaza



08 ocean



09 orange



10 petrol



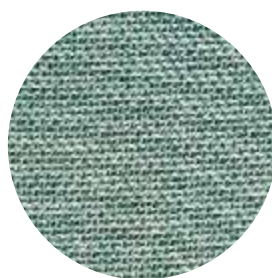
11 purple



12 rose



13 trufa



14 water green

[back to index](#)

cat. a

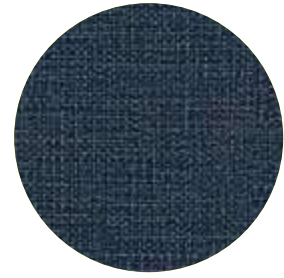
fortis



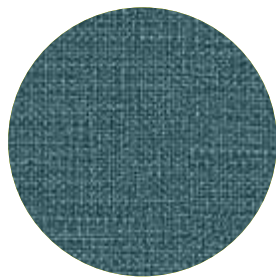
35



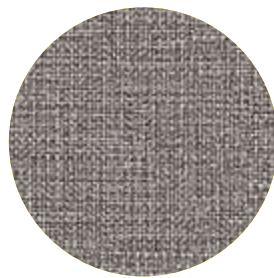
33



47



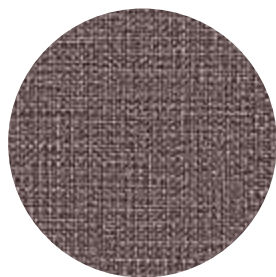
38



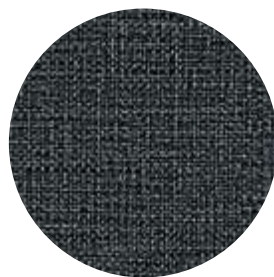
16



34



54



56

panarea



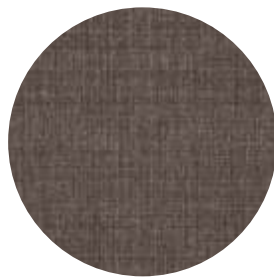
607



100



105



403

Tessuto disponibile solo per i prodotti da esterno
(Ari, Bloom, Shade).

Fabric available only for outdoor-use products
(Ari, Bloom, Shade).

Tissu disponible seulement pour les produits à usage
extérieur (Ari, Bloom, Shade).

Stoff nur für den Außenbereich-Produkte verfügbar
(Ari, Bloom, Shade).

Tejido disponible solo para los productos para exterior
(Ari, Bloom, Shade).

cat. **b**

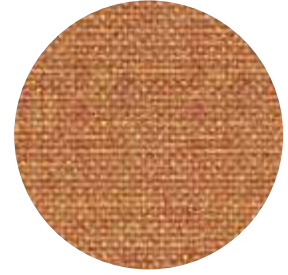
roccia



1502



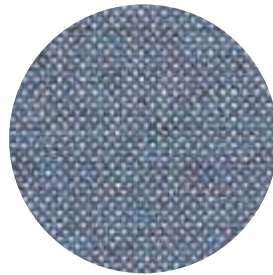
1511



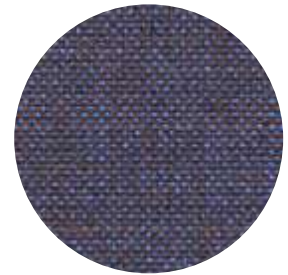
3503



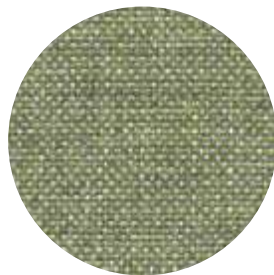
6501



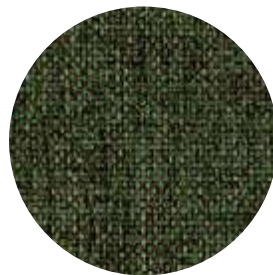
6502



6506



7504



7512

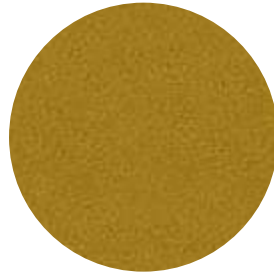
[back to index](#)

cat. **b**

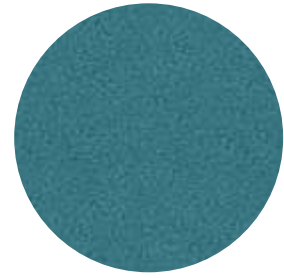
amsterdam



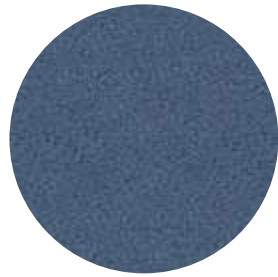
153



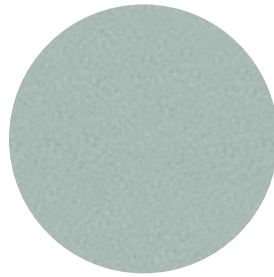
135



57



37



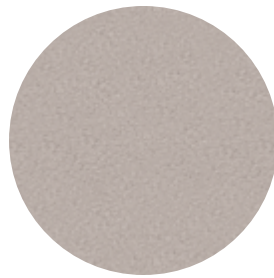
08



38



123

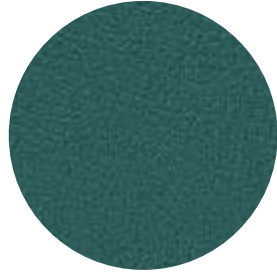


26

[back to index](#)

cat. b

inca



51



603



56



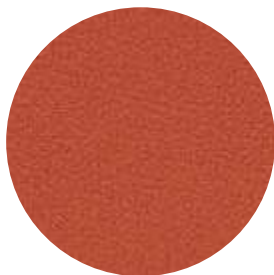
33



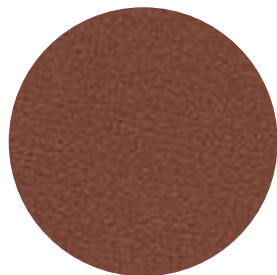
12



17



15



415



55



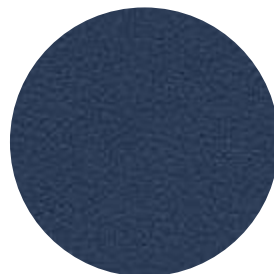
42



103



100



35

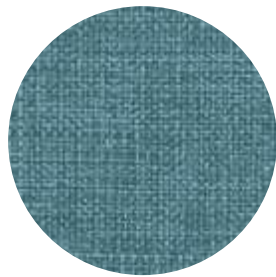


703

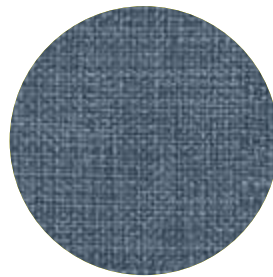
[back to index](#)

cat. b

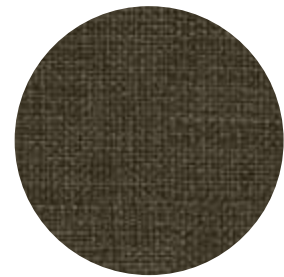
medley
gabriel



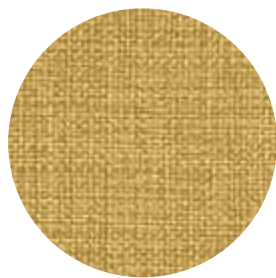
67006



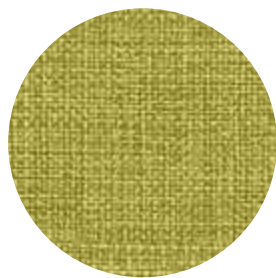
66010



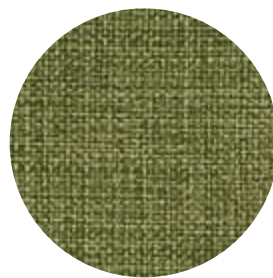
61004



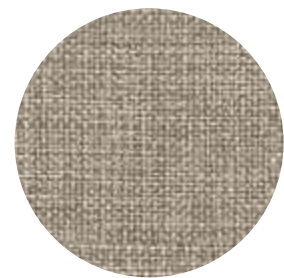
62054



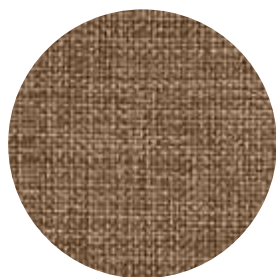
68002



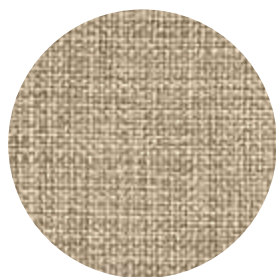
68005



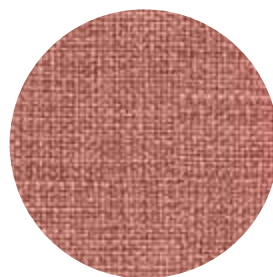
61002



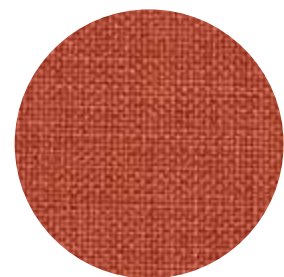
61003



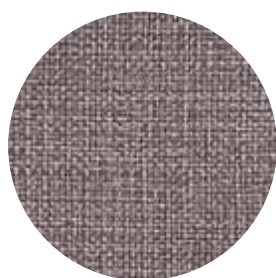
61189



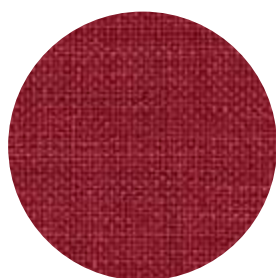
63064



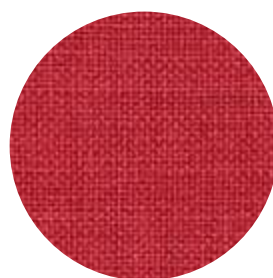
63017



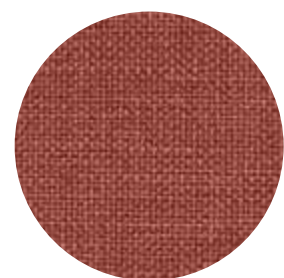
65011



64123



64019

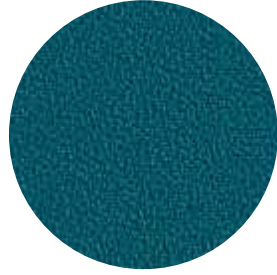


63063

[back to index](#)

cat. **b**

mirage



411



573



625



569



643



426

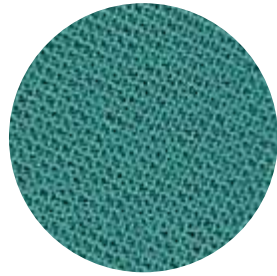


572



236

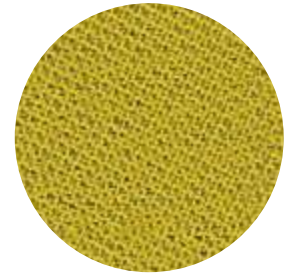
chili
gabriel



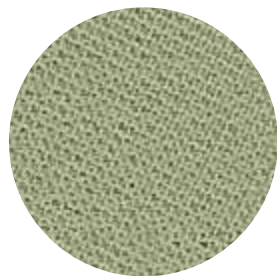
68190



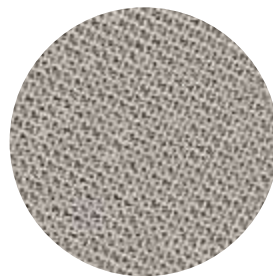
61174



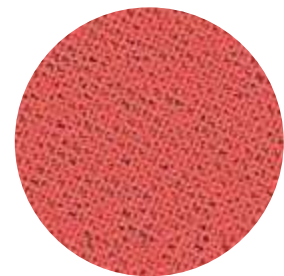
62085



68195



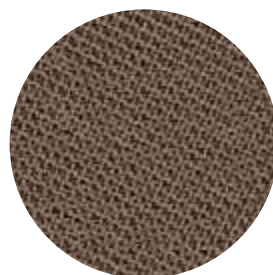
60115



64199

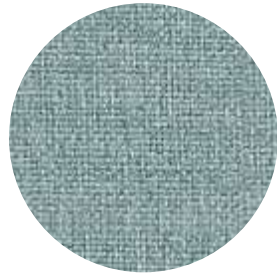


64201

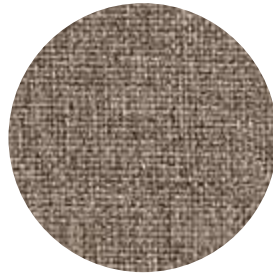


61175

convert



4467



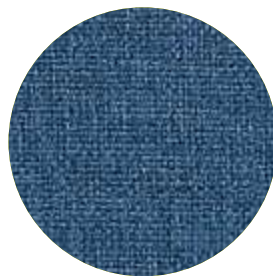
4560



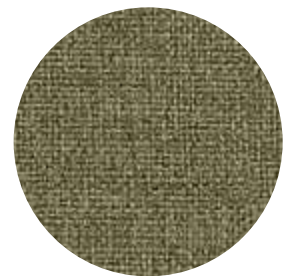
4511



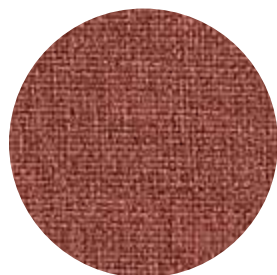
4466



4313



4462



4211

cat. e

fenice



103



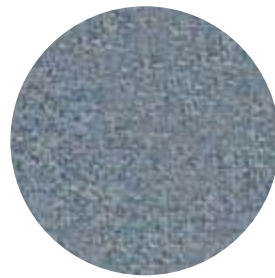
551



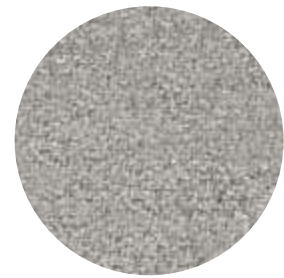
505



52



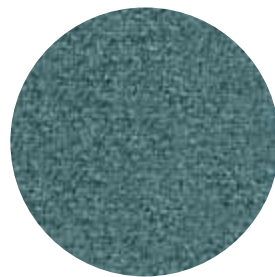
351



601



451



454

[back to index](#)

cat. e

valencia



107-8032



107-1049



107-0035



107-9035



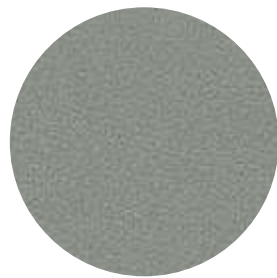
107-0020



107-2075



107-4003



107-4045



107-0034



107-0002



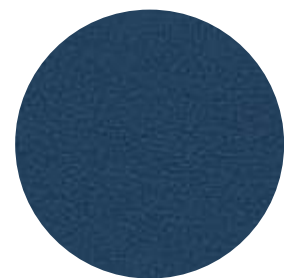
107-2062



107-2074



107-5001



107-3069

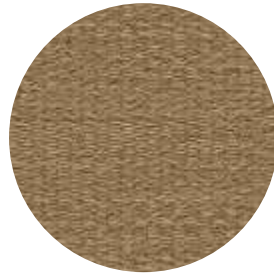
[back to index](#)

cat. g

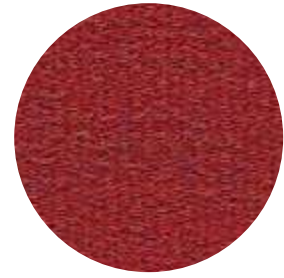
mood
gabriel



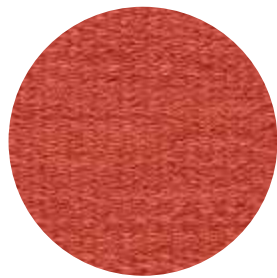
1101



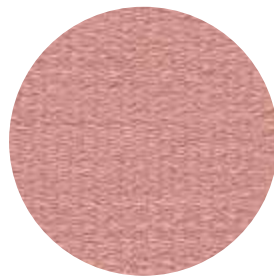
4104



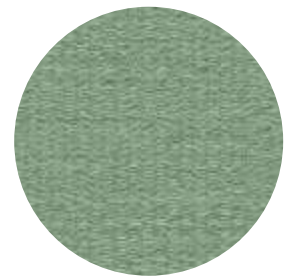
5102



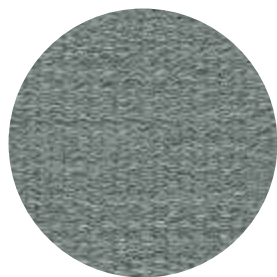
3102



1106



4106



4105

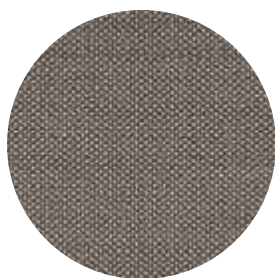


3104

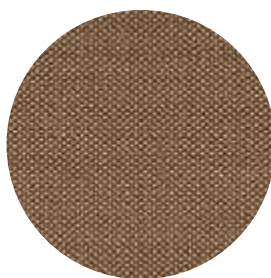
[back to index](#)

reviva hero

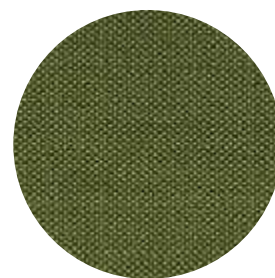
Non utilizzabile per
Hull e To-Kyo.
Not suitable for Hull
and To-Kyo.
Pas disponible pour
Hull et To-Kyo.
Nicht benutzbar für
Hull und To-Kyo.
No utilizable para
Hull, y To-Kyo.



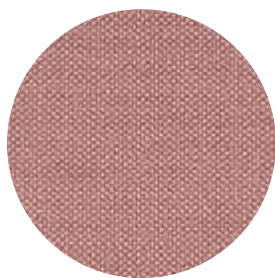
601



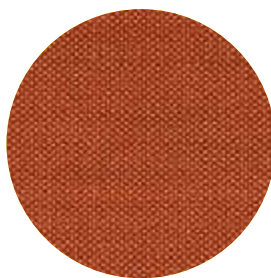
402



801



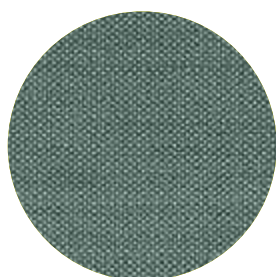
901



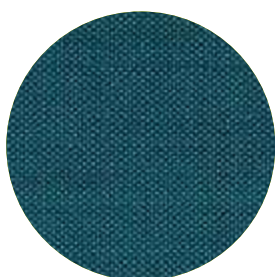
304



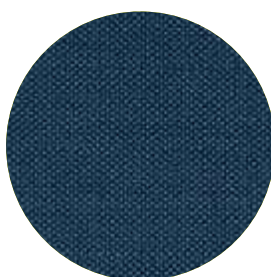
303



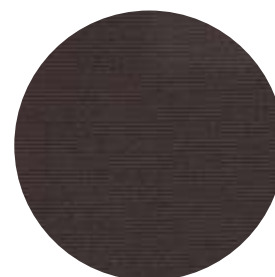
711



701



706



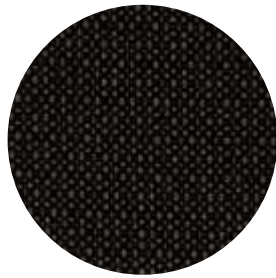
610

La collezione di tessuti Hero è realizzata con un filato di poliestere interamente riciclato e ulteriormente riciclabile. Attraverso un procedimento meccanico le bottiglie di plastica vengono trasformate in polimeri e poi in filato, senza l'uso di sostanze chimiche. Il processo di produzione del filato è 100% Made in Italy.

The Hero fabric collection is made from a polyester yarn that is entirely recycled and further recyclable. Through a mechanical process, plastic bottles are transformed into polymers and then into yarn, without the use of chemicals. The production process of the yarn is 100% Made in Italy.

reviva iris

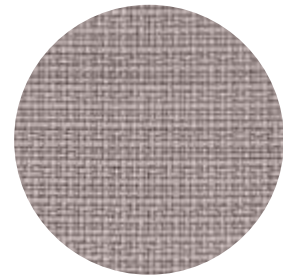
Non utilizzabile
per Hull e To-Kyo.
Not suitable
for Hull and To-Kyo.
Pas disponible pour
Hull et To-Kyo.
Nicht benutzbar für
Hull und To-Kyo.
No utilizable para
Hull y To-Kyo.



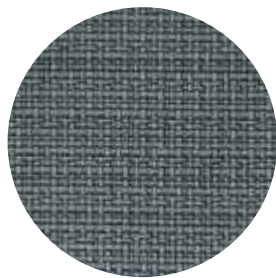
605



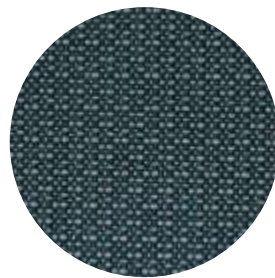
603



601



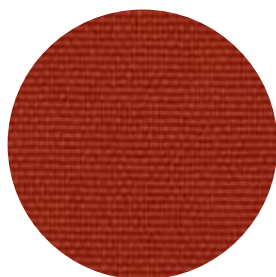
711



703



706



304

La collezione di tessuti Iris è realizzata con un filato di poliestere interamente riciclato e ulteriormente riciclabile. Attraverso un procedimento meccanico le bottiglie di plastica vengono trasformate in polimeri e poi in filato, senza l'uso di sostanze chimiche. Il processo di produzione del filato è 100% Made in Italy.

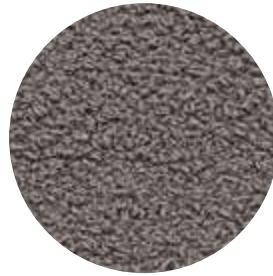
The Iris fabric collection is made from a polyester yarn that is entirely recycled and further recyclable. Through a mechanical process, plastic bottles are transformed into polymers and then into yarn, without the use of chemicals. The production process of the yarn is 100% Made in Italy.

reviva amelia

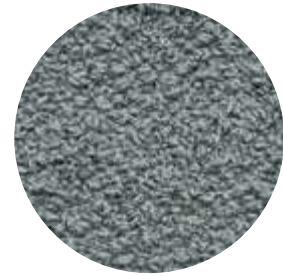
Non utilizzabile
per Hull e To-Kyo.
Not suitable
for Hull and To-Kyo.
Pas disponible pour
Hull et To-Kyo.
Nicht benutzbar für
Hull und To-Kyo.
No utilizable
para Hull y To-Kyo.



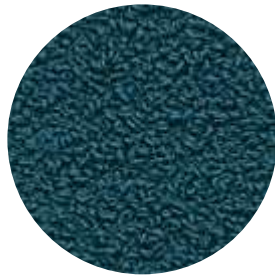
610



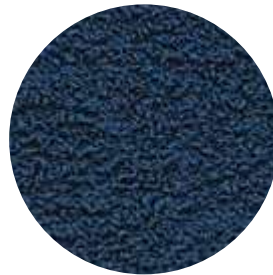
602



711



701



706

La collezione di tessuti Amelia è realizzata con un filato di poliestere interamente riciclato e ulteriormente riciclabile. Attraverso un procedimento meccanico le bottiglie di plastica vengono trasformate in polimeri e poi in filato, senza l'uso di sostanze chimiche. Il processo di produzione del filato è 100% Made in Italy.

The Amelia fabric collection is made from a polyester yarn that is entirely recycled and further recyclable. Through a mechanical process, plastic bottles are transformed into polymers and then into yarn, without the use of chemicals. The production process of the yarn is 100% Made in Italy.

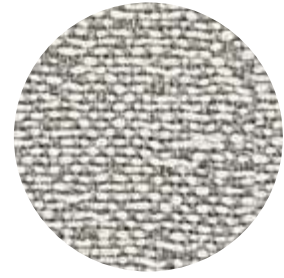
fabthirty
rubelli



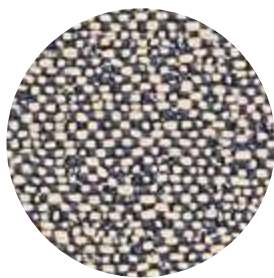
30319-7



30319-2



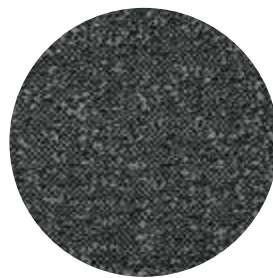
30319-8



30319-9



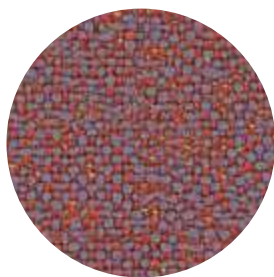
30319-5



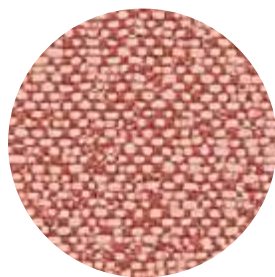
30319-11



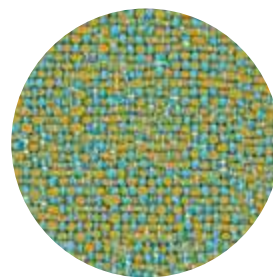
30319-13



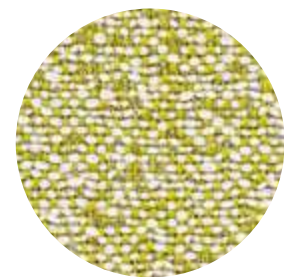
30319-14



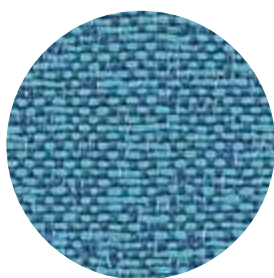
30319-15



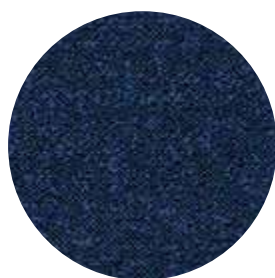
30319-20



30319-18



30319-23



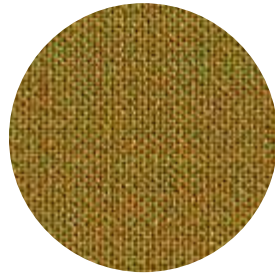
30319-25

[back to index](#)

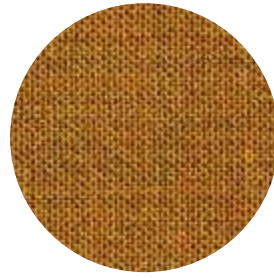
cat. I

remix 3 kvadrat

601



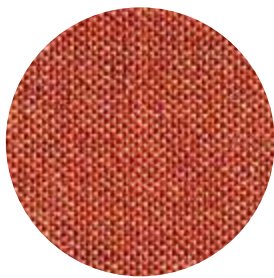
412



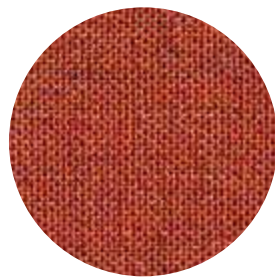
422



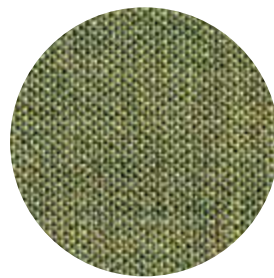
912



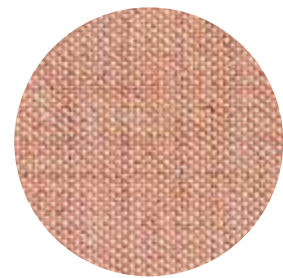
632



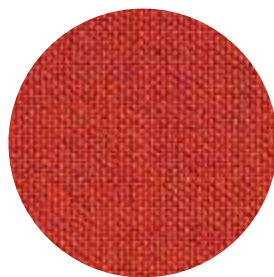
653



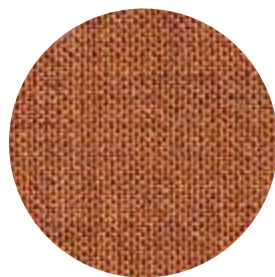
933



612



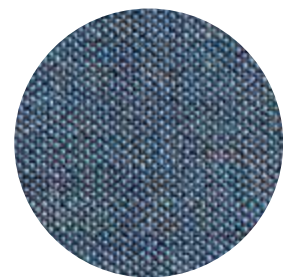
643



452



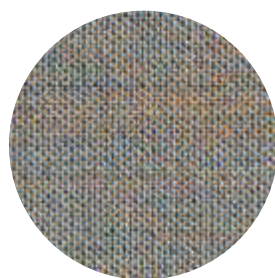
233



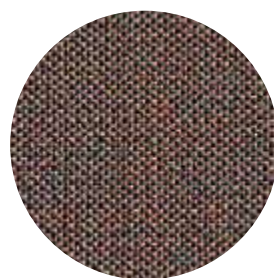
743



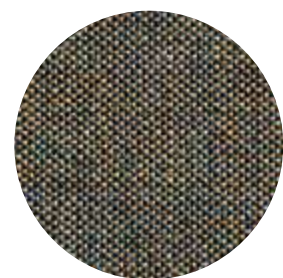
242



722



672



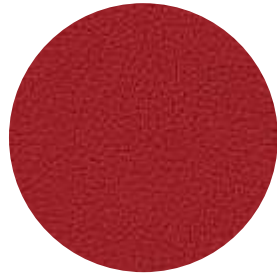
852

[back to index](#)

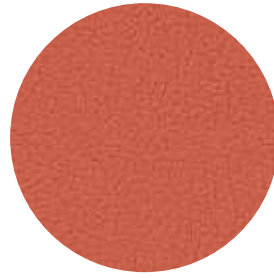
cat. m

ocean mastrotto

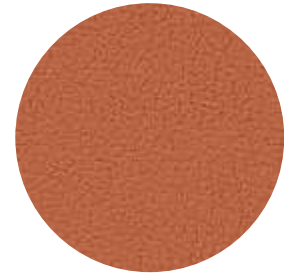
pelle / leather /
peau /leder /piel



418



433



414



413



437



446



428



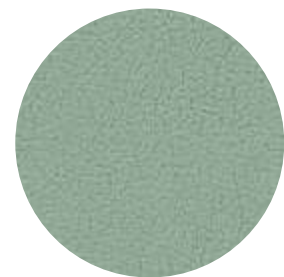
429



405



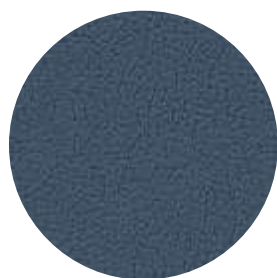
422



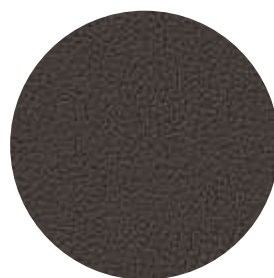
443



439



440



421



423

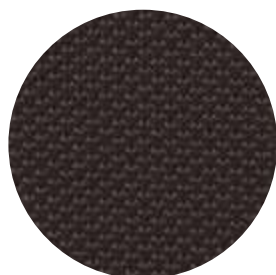
[back to index](#)

bloom

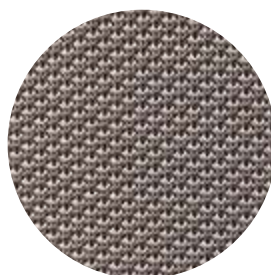
TE

Tessuti per schienale e braccioli.
Backrest and armrest fabrics.
Tissus pour accoudoirs et dossier.
Stoff für Armlehne und Rücken.
Tejidos para respaldo y reposabrazos.

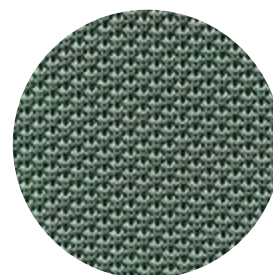
3D cover



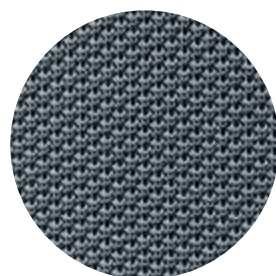
280



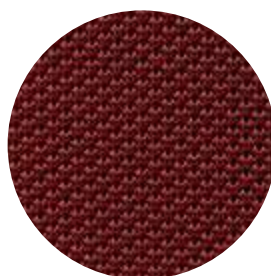
040



520



940



460

Composizione 100% PES

La maglia è prodotta sulla forma esatta del telaio e offre una tensione ottimale. I filati sono stabilizzati ai raggi UV per uso esterno con solidità del colore e durata nel tempo.

Composition: 100% PES

The knit is produced to the exact shape of the frame and offers optimum tension. The yarns are UV-stabilized for outdoor use with long lasting colour fastness and durability.

[back to index](#)

tessuti: composizione e prove fabrics: composition and tests tissus: composition et tests stoffe: zusammensetzung und test tejidos: composición y pruebas

<p>cat. a</p> <p>alba Composizione / Composition: 100% PL;</p> <p>Peso / Weight: 450 g/ml - 320 g/m² ± 5%</p> <p>Prove / Tests: Abrasion resistance ISO 12947-2: 100.000 rubs; Pilling ISO 12945-2: 5; Colour fastness to light ISO 105-B02 : 6; Colour fastness to rubbing ISO 105-X12: 4/5;</p> <p>Fire resistance: UNI 9175 Class 1 IM; EN 1021-1 & 2; BS Crib 5; BS 7176 Class Medium Hazard; California TB117.</p> <p>Note / Notes: Sustainability: Standard 100 by OEKO-TEX class 2 annex 4</p> <p>aragon Composizione / Composition: 100% PL;</p> <p>Peso / Weight: 560 g/ml</p>	<p>Note / Notes: water repellent</p> <p>panarea Composizione / Composition: 100% PP</p> <p>Peso / Weight: 200 g/m²</p> <p>Prove / Tests: Abrasion resistance EN ISO 12947-2 : > 40.000 rubs; Pilling EN ISO 12945-2:2002 : 5;</p> <p>Colour fastness to light ISO 105-B04: 7-8; Colour fastness to rubbing ISO 105-X12:2001: 4-5; Resistance to seam slippage</p> <p>EN ISO 13936-2: 3 mm warp – 2,5 mm weft. Fire resistance: NFPA 260 Class 1;</p> <p>Note / Notes: Sustainability: R.E.A.C.H., phalete free.</p>	<p>> 100.000 rubs; Colour fastness to light ISO 105-B02: 7; Colour fastness to rubbing ISO 105-X12:2001: 4 dry – 4 wet; Fire resistance: 1IM-UNI 9175; EN 1021 1/2; BS 5852 part 1; CA TB 117-2013; IMO FTP Code 307 pat 8; ÖNORM B 3825; Tensile strength ISO 1421, 300 N/5 cm warp – 200 N/5 cm weft</p> <p>Note / Notes: phtalete free</p> <p>medley Composizione / Composition: 100% PL</p> <p>Peso / Weight: 510 g/m</p> <p>Prove / Tests: Abrasion resistance EN ISO 12947-1,2: 75.000 rubs; Pilling EN ISO 12945-2:2002: 4; Colour fastness to light ISO 105-B02: 5-7; Colour fastness to rubbing ISO 105-X12:2001: 4-5 dry – 4-5 wet; Fire resistance: BS EN 1021 1-2 cigarette and match; BS EN 1021-1 cigarette; BS 5852 part 1 0,1 cigarette & match; BS 476 Part 7, class 2; ÖNORM A3800-B2-B3825-Q1 UK; CA TB 117-2013; ASTM E 84 Class I</p> <p>Note / Notes: US ACT: AAATCC 16 Light fastness, AATCC 8 or 116 Wet/dry crocking, ASTM D3511 Pilling, ASTM D4157-07 Wyz abrasion (heavy duty), CA TB 117-2013, ASTM E 84 Class I; Acoustic test air flow resistance EN 29053 & ISO 9053-1; Acoustic test sound absorption ISO 354 & ISO 11654; Sustainability: Standard 100 by OEKO-TEX</p> <p>mirage Composizione / Composition: 100% PL FR (Trevira Cs)</p> <p>Peso / Weight: 330 g/m² ± 10%</p> <p>Prove / Tests: Abrasion resistance EN ISO 12947-1,2: 100.000 rubs +/-20%; Pilling EN ISO 12945-2:2002:4/5 ± ½; Colour fastness to light ISO 105-B02: 6 ± 1; Colour fastness to rubbing ISO 105-X12:2001: 4/5 ± ½; Fire resistance: Classe 1IM; EN ISO 6940/6941; BS 5852 Crib 5 using a CM Foam 35 Kg/cu.m.; B1 DIN 4102;</p>	<p>EN 1021 part 1-2 using a CM Foam 35 Kg/cu.m.; EN 13773 Class 1; EN 13501-1 esp 1,2; CA TB 117-2013; Fire Protection Classification 5.3; FAR.25853 Classification: yes; M1 + NF D 60-013:2006 AM18; B1-ÖNORM 3800 Part 1 + ÖNORM B3825; IMO MED annex A.1 item:A.1/3.20 upholstered furniture</p> <p>Note / Notes: Sustainability: Standard 100 by OEKO-TEX; Acoustic test sound absorption ISO 354</p> <p>roccia Composizione / Composition: 100% Poliestere Trade Mark Trevira CS;</p> <p>Peso / Weight: 350g/ml - 250 g/m² ± 5%</p> <p>Prove / Tests: Abrasion resistance ISO 12947-2: 70.000 rubs; Pilling ISO 12945-2: 5; Colour fastness to light ISO 105-B02 : 6; Colour fastness to rubbing ISO 105-X12: 4/5; Reverberating chamber value ISO 354: 0,6; Fire resistance: UNI 9174 - 8456 Class C1; UNI 9175 Class 1 IM; DIN 4102 Class B1; NF 92501-7 Class M1; NF D 60013 Class AM18; EN 1021-1 & 2; BS Crib 5; BS 7176 Class Medium Hazard; EN 13773 Class 1; OENORM 3800-1 Class B1,Q1,TR1; California TB117; USA NFPA 701; USA NFPA 260; IMO Part 8 Upholstery .</p> <p>Note / Notes: Sustainability: Standard 100 by OEKO-TEX class 2 annex 4; EU Ecolabel.</p>
<p>Prove / Tests: Abrasion resistance ISO 12947-2 2016: > 60.000 rubs; Pilling ISO 12945-2:2000: 4-5; Colour fastness to light ISO 105-B02 2014: 4; Colour fastness to rubbing ISO 105-X12:2016: 4-5 dry – 4-5 wet;</p> <p>Note / Notes: water repellent. Sustainability: Standard 100 by OEKO-TEX class 2 annex 6</p> <p>fortis Composizione / Composition: surface 100% PL; back 95% PL, 5% CO.</p> <p>Peso / Weight: 305 g/m² ± 5%</p> <p>Prove / Tests: Abrasion resistance EN ISO 12947-1,2: > 100.000 rubs; Pilling EN ISO 12945-2:2002: 5; Colour fastness to light ISO 105-B02: 5; Colour fastness to rubbing ISO 105-X12:2001: 4-5 dry – 5 wet; Fire resistance: BS 5852 part 1 Ignition source 0; Tensile strength ISO 13934-1: 1153 N (31,6%) warp – 739 N (26,9%) weft; Tear growth resistance ISO 13937-3: 127,6 N warp – 114,1 N weft; Resistance to seam slippage EN ISO 13936-2: 4,00 mm warp – 4,0 mm weft.</p>	<p>cat. b</p> <p>amsterdam Composizione / Composition: 100% PL</p> <p>Peso / Weight: 430 g/m² ± 5%</p> <p>Prove / Tests: Abrasion resistance EN ISO 12947-1,2: > 100.000 rubs; Colour fastness to light ISO 105-B02: 5; Colour fastness to rubbing ISO 105-X12:2001: 5 dry – 4-5 wet; Tensile strength ISO 13934-1 : 733 N (98,4%) warp – 791 N (131%) weft; Tear growth resistance ISO 13937-3 : 80,8 N warp – 60,5 N weft; Resistance to seam slippage EN ISO 13936-2: 2,3 mm warp – 2,5 mm weft</p> <p>Note / Notes: water repellent</p> <p>inca Composizione / Composition: 88% PVC, 6% PL, 6% CO</p> <p>Peso / Weight: 650 g/m²</p> <p>Prove / Tests: Abrasion resistance ISO 5470-2:</p>	<p>Note / Notes: US ACT: AAATCC 16 Light fastness, AATCC 8 or 116 Wet/dry crocking, ASTM D3511 Pilling, ASTM D4157-07 Wyz abrasion (heavy duty), CA TB 117-2013, ASTM E 84 Class I; Acoustic test air flow resistance EN 29053 & ISO 9053-1; Acoustic test sound absorption ISO 354 & ISO 11654; Sustainability: Standard 100 by OEKO-TEX</p>	<p>cat. e</p> <p>chili Composizione / Composition: 100% PL (post-consumer recycledpolyester fr)</p> <p>Peso / Weight: 470 g/ml</p> <p>Prove / Tests: Abrasion resistance EN ISO 12947-1,2: 60.000 rubs; Pilling EN ISO 12945-2:2002: 4-5; Colour fastness to light ISO 105-B02: 5-8;</p>

Colour fastness to rubbing ISO 105-X12:2001: 4-5 dry – 4-5 wet; Fire resistance: Class 1IM UNI 9175; BS EN 1021 1&2 cigarette and match; BS EN 1021-1 cigarette; BS 7176 Medium Hazard; BS 5852 Crib 5; BS 5852 Part 1 O,1 cigarette & match; CA TB 117-2013; NFP 92-503/504/505 M1; DIN 4102-B1; AM 18-NF D 60-013 (only for fabric); DIN EN 13501-1 B-s1, d0; Tensile strength ISO 13934-1

Note / Notes:

US ACT: AATCC 16 Light fastness, AATCC 8 or 116 Wet/dry crocking, ASTM D3511 Pilling, ASTM D4157-07 Wyz abrasion (heavy duty) 100k, CA TB 117-2013; Sustainability: Standard 100 by OEKO-TEX; Acoustic test air flow resistance EN 29053 & ISO 9053-1

convert

Composizione / Composition: 100% PL (recycled polyester fr)

Peso / Weight: 340 g/m² ± 10%

Prove / Tests:

Abrasion resistance EN ISO 12947-1,2: 50.000 rubs ± 20%; Pilling EN ISO 12945-2:2002: 4/5 ± ½; Colour fastness to light ISO 105-B02: 6 ± 1; Colour fastness to rubbing ISO 105-X12:2001: 4 ± 1; Fire resistance: Classe 1IM; BS 5852 Crib 5 using a CM Foam 35 Kg/cu.m.; B1 DIN 4102; EN 1021 part 1-2 using a CM Foam 35 Kg/cu.m.; CA TB 117-2013; M1 + NF D 60-013:2006 AM18; Azimut MED annex A.1 item:A.1/3.20 upholstered furniture

Note / Notes:

Sustainability: OEKO TEX N.072150.O; Acoustic test sound absorption ISO 354

fenice

Composizione / Composition: 75% WO, 25% PA

Peso / Weight: 335 g/m² ± 7%

Prove / Tests:

Abrasion resistance EN ISO 12947-1,2: 100.000 rubs ± 20%; Pilling EN ISO 12945-2:2002: 4 ± 1; Colour fastness to light ISO 105-B02: 6 ± 1; Colour fastness to rubbing ISO 105-X12:2001: 4/5 ± ½; Fire resistance: Classe 1IM using a standard FR polyurethane foam 25 kg/cu.m.; BS 5852 Crib 5 using a standard foam 20/22 kg/cu.m.; EN 1021 part 1-2 using a standard foam 20/22 kg/cu.m.; CA TB 117-2013

Note / Notes:

Acoustic test sound absorption ISO 354; Acoustical charact. UNI EN ISO 10534-2

valencia

Composizione / Composition: Vinyl / Urethane topcoat

Peso / Weight: 650 g/m²

Prove / Tests:

Abrasion resistance EN ISO 12947-1,2 : 300.000 rubs; Fire resistance: UNI 9175 Classe 1IM; EN 1021 Part 1 & 2; CAL TB 117-2013, Section E; UNE 23.727-90 1R/M.2; NF P 92-503/ M2; DIN 4102 B2; ÖNORM B 3825, Gruppe 1 - Schwerbrennbares Verhalten; ÖNORM A 3800 Teil 1, Qualmbildungsklasse Q1 - schwachqualmend; IMO FTP 2010 Code MSC.307 (88) Part 8 3.1 & 3.2; FMVSS 302; FAR 25/853; MED (in its current valid version 2021); ECE R118.02 (replaces Directive 95/28/CE) Annexes 6, 7 & 8; EN 71-2:2006+A1:2007 - Safety of Toys - Parte 2: Flammability

Note / Notes:

Antibacterial Protection; Antifungal Protection; Antimycotic Protection; PERMABLOK3®; Anti-stain Finish; Cold Crack -23°C; Mildew resistant backing and face; UV-Resistance XENOTEST DIN 54004/ NTC 1479; EN 71-3 Safety of Toys (Migration of certain elements); Sulfide Stain Resistant; Anti-static Finish

cat. g

mood

Composizione / Composition: 92% WO (New Zealand wool), 8% PA
Peso / Weight: 555 g/m

Prove / Tests:

Abrasion resistance EN ISO 12947-1,2 : 100.000 rubs; Pilling EN ISO 12945-2:2002: 4; Colour fastness to light ISO 105-B02: 5-7; Colour fastness to rubbing ISO 105-X12:2001: 4-5 dry – 4-5 wet; Fire resistance: BS EN 1021-2 match; BS EN 1021-1 cigarette; BS 5852 part 1 O,1 cigarette & match; BS 476 Part 7, class 1; Class Uno UNI 9175 Class 1 IM; CA TB 117-2013; Resistance to seam slippage EN ISO 13936-2: 1 mm warp - 2 mm weft

Note / Notes:

US ACT: AATCC 16 Light fastness, AATCC 8 or 116 Wet/dry crocking, ASTM D3511 Pilling, ASTM D4966 Martindale (heavy duty), CA TB 117-2013; Sustainability: STANDARD 100 by OEKO-TEX®; EU Ecolabel

reviva hero

Composizione / Composition: 100% recycled and recyclable PET (polyester yarn made by post-consumer plastic bottles)

Peso / Weight: 585 g/m

Prove / Tests:

Abrasion resistance EN ISO

12947-2 : 100.000 cycles; Pilling EN ISO 12945-2:2002: 4/5; Colour fastness to artificial weathering ISO 105-B04: 7; Colour fastness to rubbing ISO 105-X12:2001: 4-5 dry – 4 wet; Fire resistance: Classe 1IM UNI 9175; EN 1021-1+2; BS 5852:2006 cigarette + flame; BS5852:2006 - Crib5 ; CA TB 117-2013+AB2998; M1 France (NF P92-504+507); IMO FTP Code 2010-part.8; Resistance to seam slippage EN ISO 13936-2: 3 mm lenght - 4 mm width

Note / Notes:

indoor&outdoor (no water repellent) Sustainability: GRS - Standard 100 by OEKO-TEX class 1 annex 4

cat. i

reviva iris

Composizione / Composition: 100% recycled and recyclable PET (polyester yarn made by post-consumer plastic bottles)

Peso / Weight: 800 g/m

Prove / Tests:

Abrasion resistance EN ISO 12947-2 : 100.000 cycles; Pilling EN ISO 12945-2:2002: 4/5; Colour fastness to artificial weathering ISO 105-B04: 7; Colour fastness to rubbing ISO 105-X12:2001: 4-5 dry – 4 wet; Fire resistance: Classe 1IM UNI 9175; EN 1021-1+2; BS 5852:2006 cigarette + flame; BS5852:2006 - Crib5; CA TB 117-2013+AB2998; IMO FTP Code 2010-part.8; Resistance to seam slippage EN ISO 13936-2: 3 mm lenght - 2 mm width

Note / Notes:

indoor&outdoor (no water repellent) Sustainability: GRS - Standard 100 by OEKO-TEX class 1 annex 4

cat. l

reviva amelia

Composizione / Composition: 100% recycled and recyclable PET (polyester yarn made by post-consumer plastic bottles)

Peso / Weight: 980 g/m

Prove / Tests:

Abrasion resistance EN ISO 12947-2 : 50.000 cycles; Pilling EN ISO 12945-2:2002: 4; Colour fastness to artificial weathering ISO 105-B04: 7; Colour fastness to rubbing ISO 105-X12:2001: 4-5 dry – 4 wet; Fire resistance: Classe 1IM UNI 9175; EN 1021-1+2; CA TB 117-2013+AB2998; IMO FTP Code 2010-part.8; Resistance to seam slippage EN ISO 13936-2: 2 mm lenght - 2 mm width

Note / Notes:

indoor&outdoor (no water repellent)

Sustainability: GRS - Standard 100 by OEKO-TEX class 1 annex 4

fabthirty

Composizione / Composition: 100% PL

Peso / Weight: 670 gr

Prove / Tests:

Abrasion resistance EN ISO 12947-1,2 : 50.000 rubs; Pilling EN ISO 12945-2:2002:4; Colour fastness to light ISO 105-B02: 7; Colour fastness to rubbing ISO 105-X12:2001: 4-5 dry – 4-5 wet; Fire resistance: BS 5852 part O,1 cigarette + match; BS 7176 contract upholstery; CA TB 117-2013; M1 NFP902-503-504-505; B1 DIN 4102-1; IMO 8 Upholstery

Note / Notes:

Sustainability: Greenguard Gold, STANDARD 100 by OEKO-TEX®

remix 3

Composizione / Composition: 90% WO (new wool) + 10% NY

Peso / Weight: 420 g/m

Prove / Tests:

Abrasion resistance EN ISO 12947-1,2: 100.000 rubs; Pilling EN ISO 12945-2:2002: 4; Colour fastness to light ISO 105-B02: 6-7; Colour fastness to rubbing ISO 105-X12:2001: 4-5 dry – 4-5 wet; Fire resistance: UNI 9175 1IM; EN 1021-1/2; BS 5852 ignition source 3; BS 5852 part 1; CA TB 117-2013; IMO FTP Code 2010: part 8; NF D60 013; NFPA 260; AS/NZS 1530.3; AS/NZS 3837 class 2; ÖNORM B1/Q1; Resistance to seam slippage EN ISO 13936-2: 5 mm warp - 3 mm weft

Note / Notes:

Acoustic test air flow resistance EN 29053; Acoustic test sound absorption ISO 354; Complies with Möbelfakta; Sustainability: EU Ecolabel, Greenguard Gold, HPD, EPD

cat. m

ocean

Composizione / Composition: leather

Prove / Tests:

Colour fastness to light ISO 105-B02: 5; Colour fastness to rubbing UNI EN ISO 11640:1998 : 4; Fire resistance: BS 5852:1979; BS EN 1021-1-2:2006; Tear strength UNI EN ISO 3377-1: 20N

tessuti: note tecniche
fabrics: technical notes
tissus: notes techniques
stoffe: technische hinweise
tejidos: notas tecnicas

1 Determinati coloranti di vestiti o di accessori (es. jeans denim) possono migrare verso i colori più chiari. Questo fenomeno è incrementato dall'umidità e dalla temperatura ed è irreversibile. Et al. non si assume nessuna responsabilità per il trasferimento di colorante causato da contaminante esterno e per le possibili macchie permanenti causate da questo fenomeno.

2 Sono ammesse leggere variazioni di colore tra differenti lotti di produzione dei tessuti.

3 I colori dei tessuti possono variare rispetto ai riferimenti cromatici forniti nel presente documento a causa delle inevitabili differenze tra i materiali reali e la riproduzione tipografica. Per ulteriori informazioni si prega di contattare l'ufficio commerciale prima dell'ordine.

1 Certain clothing or accessories dyes (such as those used on denim jeans) may migrate to lighter colors. This phenomenon is increased by humidity and temperature and is irreversible. Et al. will not assume responsibility for dye transfer caused by external contaminants and the possible permanent staining caused by this phenomenon.

2 Slight color differences may occur between different production batches.

3 Fabric colors may vary from the color references provided in this document due to the inevitable differences between real materials and typographical reproduction. For more information please contact the sales office.

1 Les pigments / teintures de certains vêtements et accessoires (telles que celles utilisés pour le jeans) peuvent déteindre sur des surfaces plus claires. Ce phénomène s'accroît avec l'humidité, la température et est irréversible. Et al. n'assume aucune garantie ni responsabilité, ni pour le depot de ces pigments/teintures ni pour l'encrassement permanent causé par ces vêtements /substances.

2 De légères différences de couleurs peuvent se produire entre différents lots de production.

3 Les couleurs des tissus peuvent varier comparés à les références de couleur fournies dans ce document en raison des différences inévitables entre les matériaux réels et la reproduction typographique. Pour plus d'informations, avant la commande veuillez contacter le bureau de vente.

1 Die Farbstoffe bestimmter Textilien und Accessoires (z.B. Jeans) können auf hellere Oberflächen abfärben. Dieser Effekt nimmt mit steigender Feuchtigkeit und Temperatur zu und ist irreversibel. Et al. haften weder für das Abfärben durch externe Stoffe oder verunreinigende Substanzen, noch für eine eventuell dadurch entstehende permanente Verschmutzung / Verfärbung.

2 Geringfügige Abänderung in Farbe sind, zwischen verschiedenen Produktionschargen von Stoffen, erlaubt.

3 Die Farben der Stoffe können von Farbe Referenzen hier wegen der unvermeidlichen Unterschiede zwischen realen Materialien und die typografische Reproduktion zur Verfügung gestellten abweichen. Für weitere Fragen, kontaktieren Sie unsere Verkaufsabteilung bitte, bevor der Bestellung.

1 Ciertas prendas de vestir y tintes de accesorios (como los utilizados en los pantalones vaqueros) pueden migrar a superficies más claras. Este fenómeno se ve incrementado por los efectos de la humedad y la temperatura y es irreversible. Et al. no asumirá ninguna responsabilidad ante reclamos de transferencia de color originados por contaminantes externos ni ante reclamos de manchas permanentes causadas por este fenómeno.

2 Están admitidas ligeras variaciones de color entre partidas de producción distintas.

3 Los colores de los tejidos pueden variar con referencia a los presentes en este documento a causa de la diferencia entre el material mismo y su reproducción tipográfica. Para más informaciones favor de contactar la oficina antes de pasar pedidos.

finiture telai
frames finishes
finitions piètements
gestellfertigungen
acabados estructuras

acciaio / steel / acier / stahl / acero

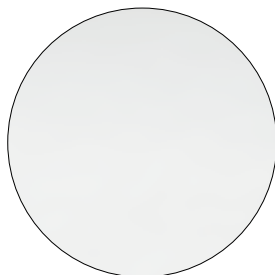
AC

acciaio / steel / acier / stahl / acero

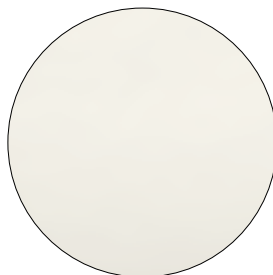


eccetto CR Cromato / except CR Chrome / sauf CR Chromé / außer CR Verchromt / excepto CR Cromado

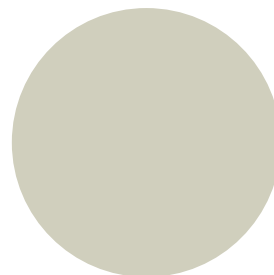
*disponibile solo per alcuni prodotti - vedi listino prezzi / Available only for selected products - see price list / Disponible seulement pour certains produits, voir la liste de prix / Nur für einige Produkte verfügbar - Siehe Preisliste / Disponible solamente para algunos productos - ver lista de precios.



NCS S0502-B
VR Bianco traffico
VR Traffic white
VR Blanc signalisation
VR Verkehrsweiß
VR Blanco tráfico



NCS S0500-N
VR Bianco puro
VR Pure white
VR Blanc pur
VR Reinweiß
VR Blanco puro



NCS S 2005-G90Y
VR Bianco canapa
VR Hemp white
VR Blanc chanvre
VR Hanfweiß
VR Blanco cáñamo



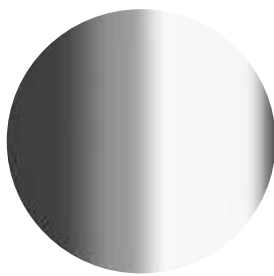
NCS S4000-N
VR Alluminio brillante
VR White aluminium
VR Aluminium blanc
VR Weißaluminium
VR Aluminio blanco



VR Peltro
VR Pewter
VR Etain
VR Zinn
VR Peltre



NCS S7502-B
VR Grigio antracite
VR Anthracite grey
VR Gris anthracite
VR Anthrazitgrau
VR Gris antracita



***CR Cromato**
CR Chrome
CR Chromé
CR Verchromt
CR Cromado



NCS S9000-N
VR Nero intenso
VR Jet black
VR Noir foncé
VR Tiefschwarz
VR Negro intenso

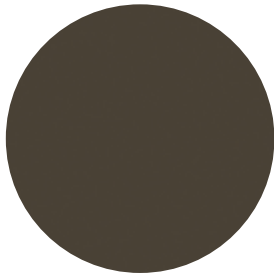


NCS S9000-N
VR Nero intenso opaco
VR Matt Jet Black
VR Noir foncé opaque
VR Matt Tiefschwarz
VR Negro intenso mate

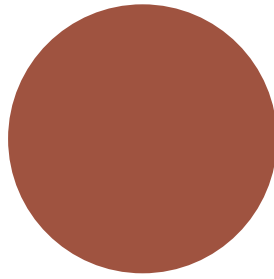


VR Bronzo metallico bucciato / VR Rough metallic bronze / VR Bronze métallique texturé / VR Rau Metallbronze / VR Bronce metálico áspero

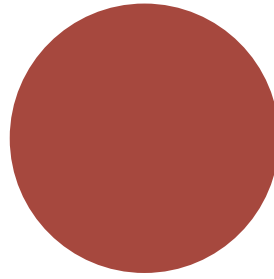
[back to index](#)



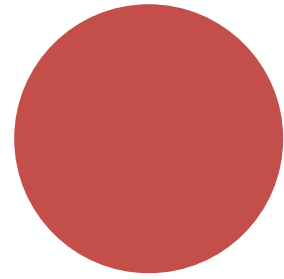
NCS S8005-Y20R
VR Marrone
 VR Brown
 VR Marron
 VR Braun
 VR Marrón



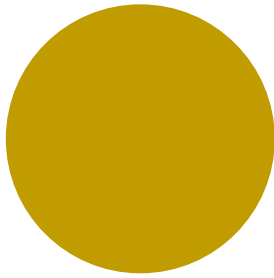
NCS S 5030-Y70R
VR Terracotta
 VR Terracotta
 VR Terracotta
 VR Terrakotta
 VR Terracota



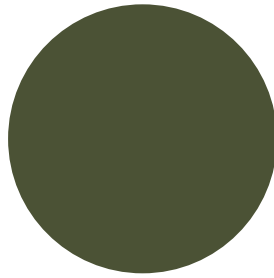
NCS S4040-R
VR Marsala
 VR Marsala
 VR Marsala
 VR Marsala
 VR Marsala



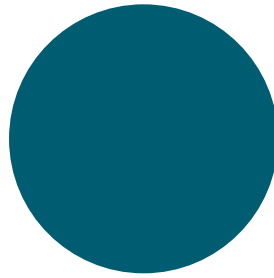
NCS S3060-Y80R
VR Rosso corallo
 VR Coral red
 VR Rouge corail
 VR Korallenrot
 VR Rojo coral



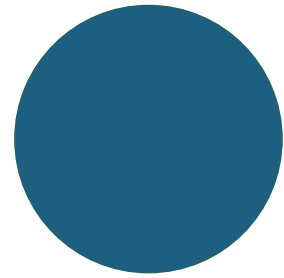
NCS S3060-Y
VR Giallo curry
 VR Curry
 VR Jaune curry
 VR Currygelb
 VR Amarillo curry



NCS S7020-G50Y
VR Verde oliva
 VR Olive green
 VR Vert olive
 VR Olivgrün
 VR Verde oliva



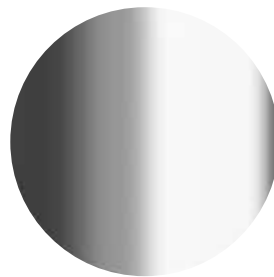
NCS S4050-B40G
VR Blu acqua
 VR Water blue
 VR Bleu d'eau
 VR Wasserblau
 VR Azul agua



NCS S6030-B
VR Blu capri
 VR Capri blue
 VR Bleu capri
 VR Blau Capri
 VR Azul capri

AX

acciaio inox AISI 304 18/10
 AISI 304 18/10 stainless steel
 acier inoxydable AISI 304 18/10
 AISI 304 18/10 Edelstahl
 acero inoxidable AISI 304 18/10



LUC Lucido
 LUC Gloss
 LUC Brillant
 LUC Poliert
 LUC Pulido



SAT Satinato
 SAT Satin
 SAT Satiné
 SAT Matt
 SAT Satinado

alluminio / aluminium / aluminium /
aluminium / aluminio

AL

alluminio / aluminium / aluminium / aluminium / aluminio

AL AND

alluminio anodizzato / anodized aluminium / aluminium
anodisé / eloxiertes aluminium / aluminio anodizado



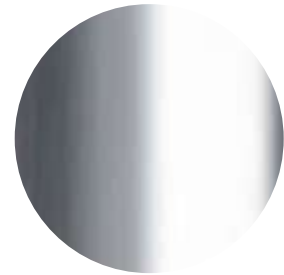
solo / only /
seulement /
nur / solamente
Marè



Nero satinato
Matt Black
Noir sa tiné
Matt Schwarz
Negro satinado



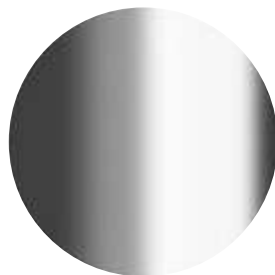
Bronzo satinato
Matt bronze
Bronze satiné
Matt Bronze
Bronce satinado



Lucido
Glossy
Brillant
Poliert
Pulido

AL PSH

alluminio lucidato / polished aluminium / aluminium
brillant / poliertes aluminium / aluminio pulido



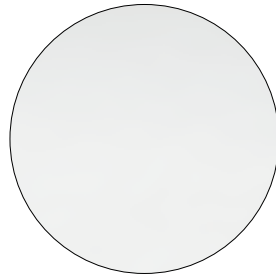
Alluminio lucidato
Polished aluminium
Aluminium brillant
Poliertes Aluminium
Aluminio pulido

[back to index](#)

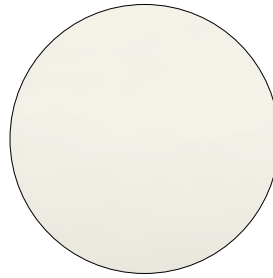
AL VR

alluminio verniciato / painted aluminium /
aluminium verni / lackiert aluminium / aluminio barnizado

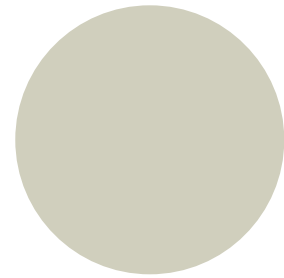
Classy 1086, 1086M, 1086N, 1087, 1087M, 1087N – Dunk 1193,
1193M, 1193N – Myra 677, 678, 683 – Snap 1108, 1108N, 1109,
1109N – Uni 578-4P, 578M-4P – Uni-Ka 591-4P, 591m-4P solo
NCS 9000-N VR Nero intenso opaco / only VR Matt Jet Black /
seulement VR Noir foncé opaque / nur VR Matt Tiefschwarz /
solamente VR Negro intenso mate



NCS S0502-B
VR Bianco traffico
VR Traffic white
VR Blanc signalisation
VR Verkehrsweiß
VR Blanco tráfico



NCS S0500-N
VR Bianco puro
VR Pure white
VR Blanc pur
VR Reinweiß
VR Blanco puro



NCS S 2005-G90Y
VR Bianco canapa
VR Hemp white
VR Blanc chanvre
VR Hanfweiß
VR Blanco cáñamo



NCS S4000-N
VR Alluminio brillante
VR White aluminium
VR Aluminium blanc
VR Weißaluminium
VR Aluminio blanco



VR Peltro
VR Pewter
VR Etain
VR Zinn
VR Peltre



NCS S7502-B
VR Grigio antracite
VR Anthracite grey
VR Gris anthracite
VR Anthrazitgrau
VR Gris antracita



NCS S9000-N
VR Nero intenso
VR Jet black
VR Noir foncé
VR Tiefschwarz
VR Negro intenso

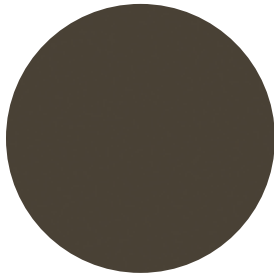


NCS S9000-N
VR Nero intenso opaco /
VR Matt Jet Black /
VR Noir foncé opaque /
VR Matt Tiefschwarz /
VR Negro intenso mate

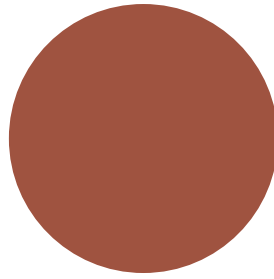


VR Bronzo metallico bucciato / VR Rough metallic bronze /
VR Bronze métallique texturé / VR Rau Metallbronze / VR Bronze metálico áspero

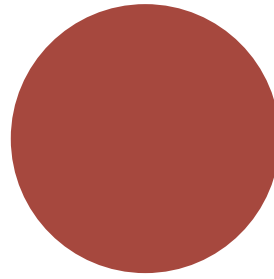
[back to index](#)



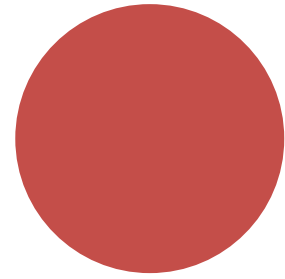
NCS S8005-Y20R
VR Marrone
 VR Brown
 VR Marron
 VR Braun
 VR Marrón



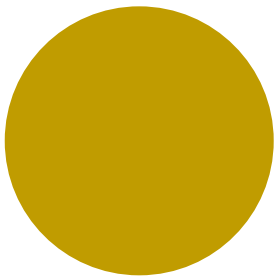
NCS S 5030-Y70R
VR Terracotta
 VR Terracotta
 VR Terracotta
 VR Terrakotta
 VR Terracota



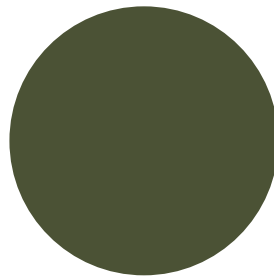
NCS S4040-R
VR Marsala
 VR Marsala
 VR Marsala
 VR Marsala
 VR Marsala



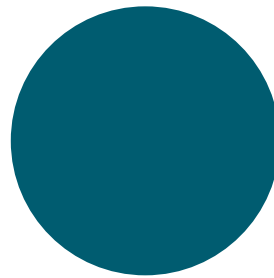
NCS S3060-Y80R
VR Rosso corallo
 VR Coral red
 VR Rouge corail
 VR Korallenrot
 VR Rojo coral



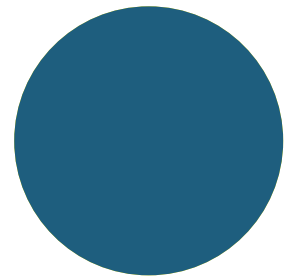
NCS S3060-Y
VR Giallo curry
 VR Curry
 VR Jaune curry
 VR Currygelb
 VR Amarillo curry



NCS S7020-G50Y
VR Verde oliva
 VR Olive green
 VR Vert olive
 VR Olivgrün
 VR Verde oliva



NCS S4050-B40G
VR Blu acqua
 VR Water blue
 VR Bleu d'eau
 VR Wasserblau
 VR Azul agua



NCS S6030-B
VR Blu capri
 VR Capri blue
 VR Bleu capri
 VR Blau Capri
 VR Azul capri

legno / wood / bois / holz / madera

LE

faggio
beech
hêtre
Buche
haya



Tinto grigio
Grey stained
Teinté gris
Grau gefärbt
Tenido gris



Tinto miele
Honey stained
Teinté miel
Honig gefärbt
Tenido miel



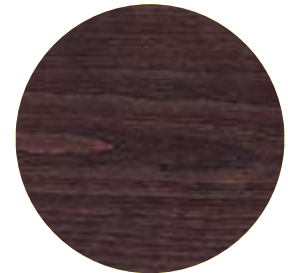
Tinto castano
Chestnut stained
Teinté châtaigne
Kastanie gefärbt
Tenido castaño



Tinto rovere
Oak stained beech wood
Hêtre teinté chêne
Buche Eiche gefärbt
Haya tenida roble



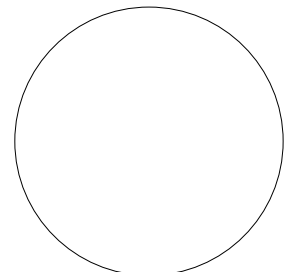
Tinto noce canaletto /
Canaletto Walnut stained
beech wood / Hêtre teinté
noyer canaletto / Buche
Nussbaum Canaletto
gefärbt / Haya tenida
nogal Canaletto



Tinto bruno
Dark brown stained
Teinté brun
Dunkel braun gefärbt
Tenido pardo



Tinto nero
Black stained
Teinté noir
Schwarz gefärbt
Tenido negro



Tinto campione
Stained according to sample
Teinté selon échantillon
Kundenmuster gefärbt
Tenido según muestra

[back to index](#)

frassino

ash
frêne
Esche
fresno



Tinto grigio
Grey stained
Teinté gris
Grau gefärbt
Tenido gris



Tinto miele
Honey stained
Teinté miel
Honig gefärbt
Tenido miel



Tinto castano
Chesnut stained
Teinté châtaigne
Kastanie gefärbt
Tenido castaño



Tinto rovere
Oak stained ash wood
Frêne teinté chêne
Esche Eiche gefärbt
Fresno tenido roble



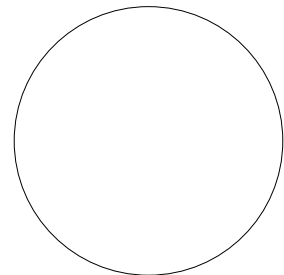
Tinto noce canaletto /
Canaletto Walnut stained
ash wood / Frêne teinté
noyer Canaletto / Esche
Nussbaum Canaletto
gefärbt / Fresno tenido
nogal Canaletto



Tinto bruno
Dark brown stained
Teinté brun
Dunkel braun gefärbt
Tenido pardo



Tinto nero
Black stained
Teinté noir
Schwarz gefärbt
Tenido negro



Tinto campione
Stained according to sample
Teinté selon échantillon
Kundenmuster gefärbt
Tenido según muestra

laminato / laminate / stratifié / laminat / laminado

LAM

Solo come finitura per fianco, zoccolo e retro panca Space+ (vedi pag. 52-23).

Solo come finitura per Deck (vedi pag. 52-23).

Finishing available for side, front and back of Space+ bench only (see p. 52-23).

Finishing available for Deck only (see p. 52-23).

Finition disponible uniquement pour coté, plinthe et dossier de banquette Space+ (voir p. 52-23).

Finition disponible uniquement pour Deck (voir p. 52-23).

Fertigung nur für Seite, Sockel und Hinten von Space+ Bänke (siehe Seite 52-23).

Fertigung nur für Deck (siehe S. 52-23).

Solamente como acabado por lado, base frente y trasera de las banquetas Space+ (ver pág. 52-23).

Solamente como acabado por Deck (ver pág. 52-23).

finiture piani tavoli
table tops finishes
finitions plateaux de table
tischplattenfertigungen
acabados por sobres
de mesas

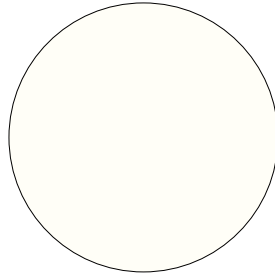
stratificato HPL / HPL solid laminate /
stratifié HPL / HPL compact platte /
estratificado HPL

STR



Bianco, Grigio argento, Moka, Antracite
White, Silver Grey, Mocha, Anthracite
Blanc, Gris argent, Moka, Anthracite
Weiss, Silbergrau, Mokka, Anthrazit
Blanco, Grisplata, Moka, Antracita

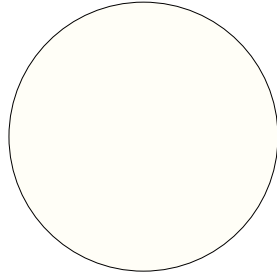
full color



Bianco
White
Blanc
Weiss
Blanco

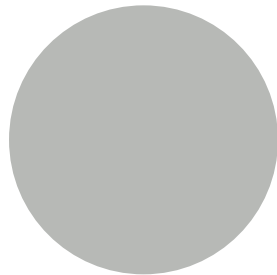
compact

cat. A

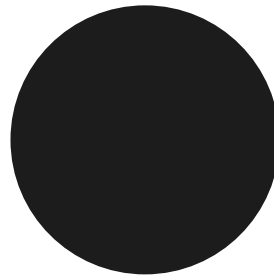


Bianco
White
Blanc
Weiss
Blanco

cat. B



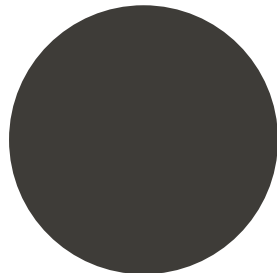
Grigio argento
Silver grey
Gris argent
Silbergrau
Grisplata



Nero
Black
Noir
Schwarz
Negro



Moka
Mocha
Moka
Mokka
Moka



Antracite
Anthracite
Anthracite
Anthrazit
Antracita

cat. C



Abet 313
Wengè congo
Congo wengè
Wenge congo
Wengè congo
Wengé congo



Abet 546
Tivoli
Tivoli
Tivoli
Tivoli
Tivoli



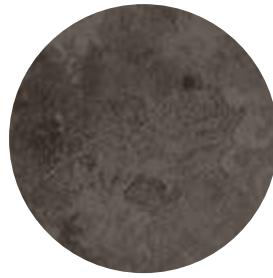
Abet 1394
Olmo perlato
Pearl elm
Orme perlé
Perlulme
Olmo perlado

[back to index](#)

cat. D



Abet 1459
Statuario
Statuario
Statuaire
Bildhauerei
Statuario

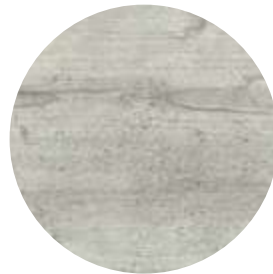


Abet 545
Vulcano
Volcano
Volcan
Vulkan
Volcán

cat. E



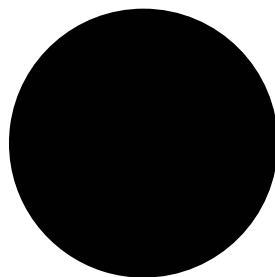
Arpa 4420
Rovere allier
Allier oak
Chêne allier
Eiche Allier
Roble allier



Arpa 3369
Cemento
Concrete
Ciment
Zement
Cemento

cat. H

Antimpronta
Anti-fingerprints
Anti-empreinte
Anti Fingerabdrücke
Antihuella

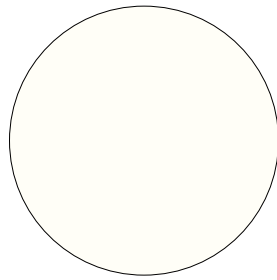


Fenix NTM 0720
Nero ingo
Ingo black
Noir ingo
Schwarz ingo
Negro ingo

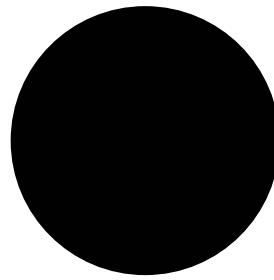
[back to index](#)

ari, bloom

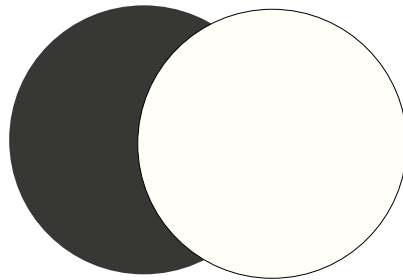
piani
table tops
plateaux
tischplatten
sobres de mesas



Full color
Bianco
White
Blanc
Weiss
Blanco



Compact*
Fenix NTM 0720
Nero ingo
Ingo black
Noir ingo
Schwarz ingo
Negro ingo



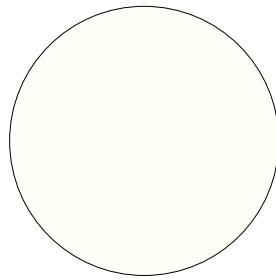
Compact *
Bicolore Grafite-Bianco
Bicolour Graphite-White
Bicolore Graphite-Blanc
Zweifarbige Graphite-Weiss
Bicolor Grafite-Blanco

*Antimpronta / Anti-fingerprints / Anti-empreinte /
Anti Fingerabdrücke / Antihuella

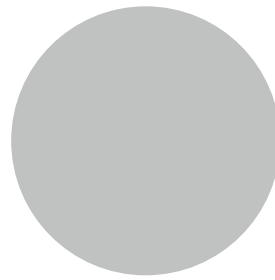
laminato / laminate / stratifié / laminat / laminado

LAM

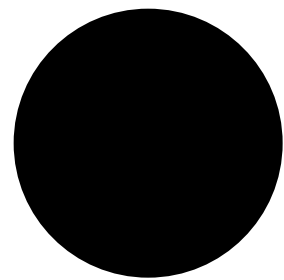
cat. J



Arpa 20
Bianco
White
Blanc
Weiß
Blanco
fin.erre



Arpa 211
Grigio argento
Silver grey
Gris argent
Silbergrau
Gris plata
fin.erre



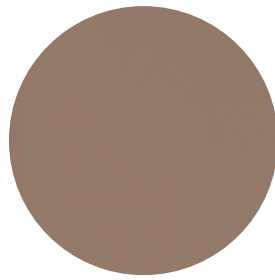
Arpa 509
Nero
Black
Noir
Schwarz
Negro
fin.erre



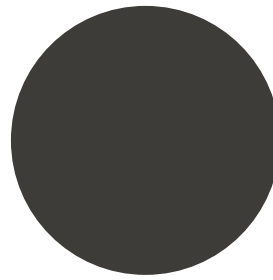
Abet 313
Wengè congo
Congo wengè
Wenge congo
Wengè congo
Wengè congo
fin.nutshell

[back to index](#)

cat. K



Abet 893
Terra d'ombra
Umber
Terre d'ombre
Schattenland
Sombra
fin.sei



Arpa 526
Grigio tempesta
Tempest grey
Gris tempête
Sturmgrau
Gris tempesta
fin.erre



Abet 897
Bruno vulcano
Volcano brown
Marrón volcán
Vulkan braun
Marron volcan
fin.sei



Abet 631
Teak plissé
Pleated teak
Teak plissé
Falten-teak
Teak plisado
fin.grainwood



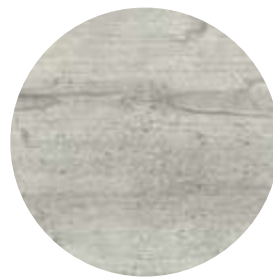
Arpa 4420
Rovere allier
Allier oak
Chêne allier
Eiche Allier
Roble allier
fin.erre



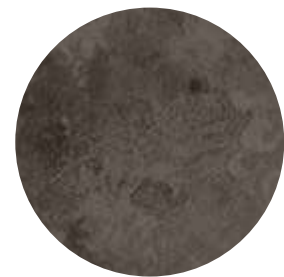
Abet 602
Rovere boemia
Bohemia oak
Chêne bohème
Eiche Bohemia
Roble bohemia
fin.holz



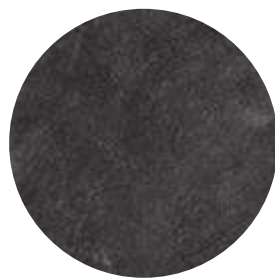
Abet 1394
Olmo perlato
Pearl elm
Orme perlé
Perlulme
Olmo perlado
fin.root



Arpa 3369
Cemento
Concrete
Ciment
Zement
Cemento
fin.luna



Abet 545
Vulcano
Volcano
Volcan
Vulkan
Volcán
fin.climb



Abet 1455
Ardesia
Slate
Ardoise
Schiefer
Pizarra
fin.climb



Abet 546
Tivoli
Tivoli
Tivoli
Tivoli
Tivoli
fin.climb

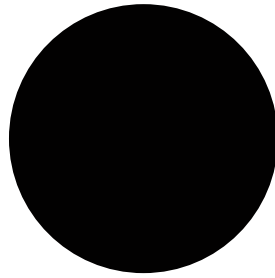


Abet 1459
Statuario
Statuario
Statuaire
Bildhauerei
Statuario
fin.papier

[back to index](#)

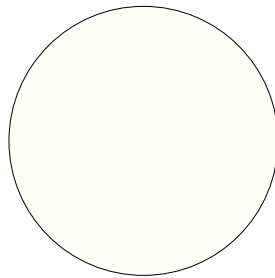
cat. H

Antimpronta
Anti-fingerprints
Anti-empainte
Anti Fingerabdrücke
Antihuella

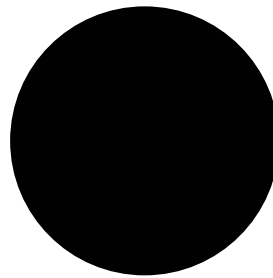


Fenix NTM 0720
Nero ingo
Ingo black
Noir ingo
Schwarz ingo
Negro ingo

harvey



Arpa 20
Bianco
White
Blanc
Weiß
Blanco
fin.erre



Fenix NTM 0720
Nero ingo
Ingo black
Noir ingo
Schwarz ingo
Negro ingo

silestone / silestone / silestone / silestone /
silestone

silestone

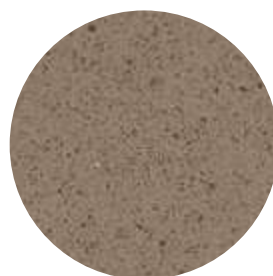
Piani spessore 12 mm con bordo piatto realizzati in Silestone.

Questo materiale, composto per oltre il 90% da quarzo naturale, vanta un'altissima resistenza a graffi e macchie e si presta pertanto agli usi più disparati.

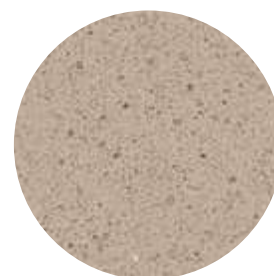
12 mm thick tops with flat edge made in Silestone. This material composed of more than 90% natural quartz, boasts a very high resistance to scratches and stains and therefore lends itself to the most different uses.



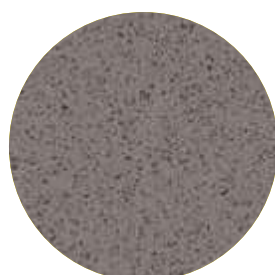
White Storm



Noka



Rougui



Gris Expo



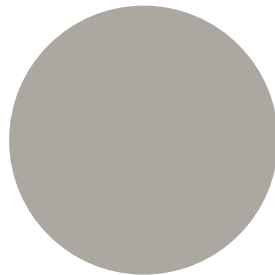
Tebas Black

linoleum / linoleum / linoleum / linoleum / linoleum

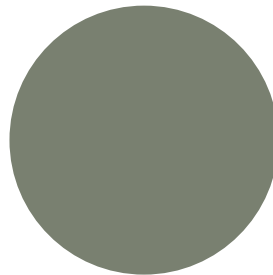
linoleum

Piani spessore 21 mm con bordo piatto, realizzati con anima in multistrato di betulla e superficie in linoleum. Il linoleum è un materiale sostenibile, antistatico per natura e antimpronta. Disponibile per Harvey con spessore 27 mm.

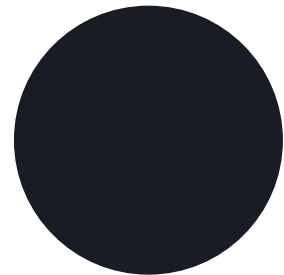
21 mm thick tops with flat edge made of birchplywood and linoleum surface. Linoleum is a sustainable, naturally antistatic and anti-fingerprint material. Available for Harvey with thickness of 27 mm.



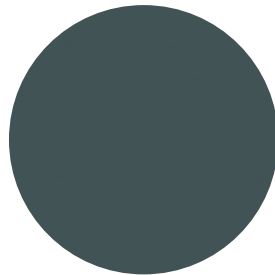
Pebble 4175



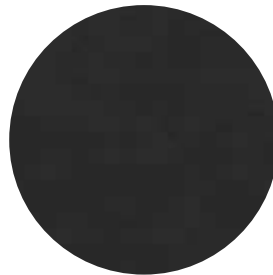
Olive 4184



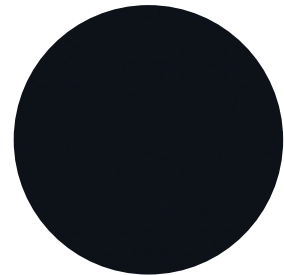
Charcoal 4166



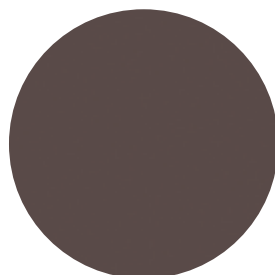
Pewter 4155



Iron 4178



Black 4023



Mauve 4172

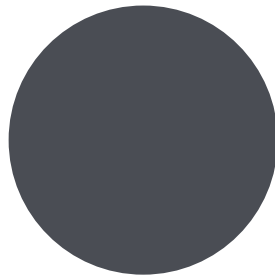
alluminio / aluminium / aluminium / aluminium / aluminio

AL

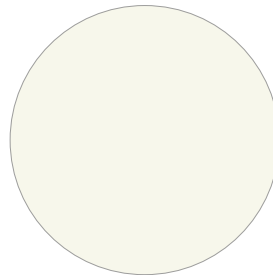


Realizzato con un innovativo materiale ecologico, questo piano combina alluminio e un'anima plastica, separabili meccanicamente ed entrambi riciclabili. Grazie alla sua composizione, il piano è ignifugo, non emette VOC (Volatile Organic Compounds) e non contiene formaldeide, garantendo un ambiente più salubre e sicuro. Perfetto per l'uso outdoor, è dotato di una verniciatura antigraffio e resistente ai raggi UV.

Made from an innovative, environmentally friendly material, this top combines aluminium and a plastic core, both of which can be mechanically separated and recycled. Thanks to its composition, the top is fireproof, emits no VOCs (Volatile Organic Compounds), and is free from formaldehyde, ensuring a healthier and safer environment. Perfect for outdoor use, it has a scratch-resistant and UV-resistant paint finish.



NCS S7502-B
Grigio antracite
Anthracite grey
Gris anthracite
Anthrazitgrau
Gris antracita



NCS S0500-N
Bianco puro
Pure
white
Blanc pur
Reinweiß
Blanco puro

uso e manutenzione - pulizia

use and maintenance - cleaning

utilisation et entretien - nettoyage

gebrauch und wartung - reinigung

uso y mantenimiento - limpieza

Istruzioni generali per l'utilizzo dei prodotti Et al.

Al fine di garantire la durata nel tempo dei prodotti Et al., consigliamo di verificare periodicamente il corretto serraggio delle viti e di tenerli lontano da fonti di calore. Le sedute vanno utilizzate con le quattro gambe o la base appoggiata sul pavimento. Evitare di dondolarsi sulle gambe, salirvi in piedi, sedersi sullo schienale, sedersi sui braccioli e utilizzare il prodotto come scaletta. I tavoli vanno utilizzati con le quattro gambe o con la base appoggiata sul pavimento. Evitare di sedersi sui piani o salirvi in piedi. Alla fine del loro utilizzo i prodotti o i loro componenti non vanno dispersi nell'ambiente. Si consiglia di chiamare le aziende preposte allo smaltimento dei rifiuti per il loro trasporto in discarica. Et al. declina ogni responsabilità per danni derivanti da un uso improprio del prodotto.

materiale plastico

PA (Poliammide)

Pulire il prodotto con un panno morbido e umido. Si consiglia l'utilizzo di detergenti neutri, meglio se diluiti in acqua. Non utilizzare detersivi abrasivi o che contengano, anche in minima quantità, alcool, trielina, ammoniaca e solventi in generale.

PP (Polipropilene)

Pulire il prodotto con un panno morbido e umido. Si consiglia l'utilizzo di detergenti neutri, meglio se diluiti in acqua. Non utilizzare detersivi abrasivi o che contengano, anche in minima quantità, alcool, trielina, ammoniaca e solventi in generale. Le scocche in PP sono trattate anti-UV. Il trattamento anti-UV è soggetto a un'usura che si accelera in caso di esposizione continua e prolungata alle intemperie e a forti sbalzi di temperatura. Per mantenere a lungo il prodotto in buone condizioni consigliamo di conservarli durante l'inverno in luoghi chiusi e asciutti e al riparo da forti sbalzi termici.

PVC (Polivinilcloruro)

Lavare il prodotto con acqua e detergente neutro incolore. Sciacquare con acqua a temperatura non superiore ai 30°C.

legno

Faggio - Frassino

Pulire il prodotto con un panno morbido e umido. Si consiglia l'utilizzo di detergenti neutri, meglio se diluiti in acqua. In seguito risciacquare con una spugna bagnata e asciugare con un panno asciutto.

rivestimenti

tessuto

Alba, Aragon, Fortis, Panarea, Roccia, Amsterdam, Medley, Mirage, Chili, Convert, Fenice, Reviva Hero, Reviva Iris, Reviva Amelia, Fabthirty. Pulire il prodotto con un panno morbido e umido utilizzando detergente neutro.

Pelle ed ecopelle

Inca, Valencia, Ocean. Pulire il prodotto con una spugna inumidita in acqua tiepida e detergente neutro.

lana

Fenice, Mood, Remix 3. Utilizzare smacchiatori a secco.

metallo

AC VR - AC CR

(Acciaio Verniciato - Cromato)

Pulire il prodotto con un panno morbido e umido utilizzando detergente neutro. In caso i prodotti vengano usati all'esterno è fortemente consigliato il trattamento di zincatura o di cataforesi. Per mantenere a lungo il prodotto in buone condizioni consigliamo di conservarli durante l'inverno in luoghi chiusi e asciutti in modo da evitare le formazioni di condensa. Prima della stagione invernale e con cadenza trimestrale, se i prodotti sono conservati in prossimità del mare, si raccomanda di pulire le superfici di metallo con un panno morbido utilizzando

acqua o detergenti e proteggerle con olio di vaselina.

AX

(Acciaio Inox: Satinato - Lucido)

Pulire il prodotto con un panno morbido ed umido utilizzando detergente neutro. Per proteggere il prodotto durante un eventuale stoccaggio si consiglia di stendere un velo di paraffina con l'utilizzo di un panno.

AL AND - AL PSH - AL VR

(Alluminio Anodizzato - Lucidato - Verniciato)

Pulire il prodotto con un panno morbido ed umido utilizzando detergente neutro.

finiture piani tavoli

LAM (Laminato)

La superficie va pulita con regolarità attraverso un panno umido di acqua calda e detergenti delicati; sono ben tollerati quasi tutti i normali prodotti detergenti o disinfettanti domestici purché non siano abrasivi o alcalini.

STR (Stratificato HPL:

Full Color - Compact)

La superficie va pulita con regolarità attraverso un panno umido di acqua calda e detergenti delicati; sono ben tollerati quasi tutti i normali prodotti detergenti o disinfettanti domestici purché non siano abrasivi o alcalini.

Linoleum

Pulire utilizzando un panno in microfibra inumidito con acqua tiepida e detergente neutro. Per una pulizia più completa si consiglia l'uso di prodotti specifici per la pulizia e la manutenzione delle superfici in linoleum. Evitare l'utilizzo di prodotti diversi da quelli consigliati, in quanto potrebbero danneggiare o compromettere le superfici in linoleum.

Silestone

Per la pulizia quotidiana usare una spugna morbida o un panno in microfibra e dell'acqua tiepida, applicando in aggiunta del sapone neutro. Per indicazioni su come trattare macchie più difficili si prega di contattare l'ufficio

commerciale. Comportamento in caso di urti: tra le caratteristiche che contraddistinguono superfici di questo tipo vi è l'elevata resistenza a urti e impatti. Ovviamente è necessario evitare qualunque tipo di urto nelle aree che, in ragione delle lavorazioni specifiche, possono essere più delicate e maggiormente esposte (angoli e spigoli, ...). Comportamento in presenza di calore: non mettere oggetti caldi e conduttori di calore, come padelle, pentole o altri utensili, a contatto diretto con la superficie.

AL (Alluminio)

Pulire il prodotto con un panno morbido ed umido utilizzando detergente neutro.

General instructions for the use of Et al. products

To ensure that Et al. products are long-lasting, we advise periodically checking that the screws are properly tightened and keeping them away from heat sources. The seats should be used with four legs or the base resting on the floor. Avoid rocking on the legs, standing on the chair, sitting on the backrest or the arms or using the product as a stepladder. The tables should be used with four legs or the base resting on the floor. Do not sit or stand on the table top. When no longer required, the products and their components must be disposed of responsibly. We recommend calling a waste disposal company to remove unwanted products and components. Et al. declines any responsibility for damages resulting from improper use of the products..

plastic

PA (Polyamide)

Clean the product with a soft, damp cloth. We recommend using neutral detergents, preferably diluted in water. Do not use abrasive detergents or ones which contain even minimum quantities of alcohol, trichloroethylene, ammonia or solvents, in general.

PP (Polypropylene)

Clean the product with a soft, damp cloth. We recommend using neutral detergents, preferably diluted in water. Do not use abrasive detergents or ones which contain even minimum quantities of alcohol, trichloroethylene, ammonia or solvents, in general. The PP frames are anti-UV treated. The anti-UV treatment is subject to more rapid wear in the event of continual and prolonged exposure to the elements and significant changes in temperature. To maintain the product in good condition for a long time, we recommend storage in closed and dry environments that are sheltered from significant differences in temperature during the winter.

PVC (Polyvinyl chloride)

Wash the product with water and colourless neutral detergent. Rinse with water at a temperature not exceeding 30°C.

XLP (Xiloplast)

Wash the product with water and colourless neutral detergent. Rinse with warm water that does not exceed 30°C. The product can be washed with pressure devices: keep the nozzle at least 60 cm from the product surface.

wood

Beech – Ash

Clean the product with a soft, damp cloth. We recommend using neutral detergents, preferably diluted in water. Then, wipe down with a wet sponge and dry with a dry cloth.

covering

fabric

Fortis, Melva, Panarea, Amsterdam, Medley, Mirage, Chili, Reviva Hero, Reviva Iris, Reviva Amelia, Fabthirty Clean the product with a soft, damp cloth and a mild detergent.

Leather and imitation-leather

Inca, Valencia, Ocean Clean the product with a sponge, warm water and a mild detergent.

wool

Fenice, Mood, Remix 3 Use a dry stain remover.

metal

AC VR – AC CR

(Painted – Chrome-plated)

Clean the product with a soft, damp cloth and a neutral detergent. In the event of product use outdoors, we highly recommend zinc-coating or cathoporesis treatments. To maintain the product in good condition for a long time, we recommend storage in closed and dry environments in order to avoid condensation. If the products are used or stored in seaside environments, before the winter season and every three months, we recommend cleaning the metal surfaces, with a soft cloth using water or detergents, and applying Vaseline oil.

AX

(Stainless Steel: Satin-finish – Polished)

Clean the product with a soft, damp cloth, using a neutral detergent. We recommend using a cloth to apply a thin layer of paraffin to protect the product when stored.

AL AND – AL PSH – AL VR

(Anodized – Polished Painted aluminium)

Clean the product with a soft, damp cloth, using a neutral detergent.

table top finishes

LAM (Laminated)

The surface should be cleaned regularly with a warm, damp cloth and mild detergents; Most standard detergents or household disinfectants can be used provided they are not abrasive or alkaline.

STR (HPL Solid Laminate:

Full color – Compact)

The surface should be cleaned regularly with a warm, damp cloth and mild detergents. Most standard detergents or household disinfectants can be used provided they are not abrasive or alkaline.

Linoleum

Clean using a microfiber cloth dampened with warm water and mild detergent.

For a more thorough cleaning, it is recommended to use products specifically designed for cleaning and maintaining linoleum surfaces. Avoid using products other than those recommended, as they may damage or compromise the linoleum surfaces.

Silestone

For daily cleaning, use a soft sponge or a microfiber cloth with warm water, adding mild soap as needed. For advice on how to treat more difficult stains, please contact the sales office. Behavior in case of impacts: among the characteristics that distinguish surfaces of this type is their high resistance to shocks and impacts. However, it is necessary to avoid any type of impact in areas that, due to specific processing, may be more delicate and more exposed (corners and edges, etc.). Behavior in the presence of heat: Do not place hot objects or heat conductors, such as pans, pots, or other utensils, in direct contact with the surface after use.

AL (Aluminium)

Clean the product with a soft, damp cloth, using a neutral detergent.

Instructions générales pour l'utilisation des produits Et al.

Afin de garantir une longue durée de vie aux produits Et al., nous conseillons de vérifier régulièrement que les vis sont bien serrées et que les produits sont utilisés loin de sources de chaleur. Les chaises doivent être utilisées avec les quatre pieds ou le socle posé au sol. Éviter de se balancer en soulevant les pieds de la chaise, de se mettre debout sur l'assise, de s'asseoir sur le dossier ou sur les accoudoirs. Les tables doivent être utilisées avec les quatre pieds ou le socle posé au sol. Éviter de s'asseoir ou de se mettre debout sur le plateau. À la fin de leur vie utile, les produits et leurs composants doivent être éliminés dans le respect de l'environnement. Il est conseillé de contacter une entreprise préposée au traitement des déchets pour leur transport en décharge. Et al. décline toute responsabilité pour les dommages résultant d'une mauvaise utilisation du produit.

matière plastique

PA (Polyamide)

Nettoyer le produit avec un chiffon doux et humide. Il est conseillé d'utiliser des détergents neutres, de préférence dilués dans de l'eau. Ne pas utiliser de détergents abrasifs ou qui contiennent de l'alcool, du trichloréthylène, de l'ammoniaque et tout solvant, même en quantité très réduite.

PP (Polypropylène)

Nettoyer le produit avec un chiffon doux et humide. Il est conseillé d'utiliser des détergents neutres, de préférence dilués dans de l'eau. Ne pas utiliser de détergents abrasifs ou qui contiennent de l'alcool, du trichloréthylène, de l'ammoniaque et tout solvant, même en quantité très réduite. Les coques en PP sont traitées anti-UV. Le traitement anti-UV est sujet à une usure plus rapide en cas d'exposition continue et prolongée aux intempéries et aux brusques variations de température. Pour garantir durablement le bon état du produit, en hiver, il est recommandé de le conserver dans un lieu clos, à l'abri de l'humidité et des brusques variations de température.

PVC (Chlorure de polyvinyle)

Laver le produit avec de l'eau et un détergent neutre incolore. Rincer à l'eau à une température ne dépassant pas 30°C.

XLP (Xiloplast)

Laver le meuble avec de l'eau et du détergent neutre incolore. Rincer avec de l'eau à une température ne dépassant pas les 30°C. Le produit peut être lavé avec des dispositifs de nettoyage sous pression : garder la pointe du diffuseur à une distance minimum de 60 cm de la surface du meuble.

bois

Hêtre – Frêne

Nettoyer le produit avec un chiffon doux et humide. Il est conseillé d'utiliser des détergents neutres, de préférence dilués dans de l'eau. Rincer ensuite avec une éponge mouillée et essuyer avec un chiffon sec.

revêtements

tissu

Fortis, Melva, Panarea, Amsterdam, Medley, Mirage, Chili, Reviva Hero, Reviva Iris, Reviva Amelia, Fabthirty Nettoyer le produit avec un chiffon doux et humide en utilisant un détergent neutre.

cuir et simili-cuir

Inca, Valencia, Ocean
Nettoyer le produit avec une éponge humidifiée avec de l'eau tiède et un détergent neutre.

laines

fenice, Mood, Remix 3
Utiliser un détachant à sec.

métaux

AC VR – AC CR

(Acier verni – Chromé)

Nettoyer le produit avec un chiffon doux et humide en utilisant un détergent neutre. Dans le cas où les produits seraient utilisés en extérieur, le traitement de zincage ou de cataphorèse est vivement recommandé. Pour garantir durablement le bon état du produit, en hiver, il est recommandé de le conserver dans un lieu clos et à l'abri de l'humidité pour prévenir la formation de condensation. Avant les mois d'hiver et tous les trois mois si les produits sont utilisés à proximité de la mer, il est recommandé de nettoyer les surfaces métalliques à l'aide d'un chiffon doux, en utilisant de l'eau ou un détergent, et de les protéger à l'aide d'huile de vaseline.

AX

(Acier Inox : Satiné – Brillant)

Nettoyer le produit avec un chiffon doux et humide en utilisant un détergent neutre. Pour protéger le produit pendant un éventuel stockage, il est conseillé d'appliquer une couche de paraffine avec un chiffon.

AL AND – AL PSH – AL VR

(Aluminium anodisé – Brillant – Verni)

Nettoyer le produit avec un chiffon doux et humide en utilisant un détergent neutre.

finitions plateaux des tables

LAM (Stratifié)

Nettoyer régulièrement la surface avec un chiffon humidifié avec de l'eau chaude et des détergents délicats ; pratiquement tous les produits détergents et désinfectants domestiques courants sont bien tolérés à condition qu'ils ne soient pas abrasifs ou alcalins.

STR

(Stratifié HPL : Full color – Compact)

Nettoyer régulièrement la surface avec un chiffon humidifié avec de l'eau chaude et des détergents délicats ; pratiquement tous les produits détergents et désinfectants domestiques courants sont bien tolérés à condition qu'ils ne soient pas abrasifs ou alcalins.

Linolium

Nettoyer en utilisant un chiffon en microfibre humidifié avec de l'eau tiède et un détergent neutre. Pour un nettoyage plus complet, il est recommandé d'utiliser des produits spécifiques pour le nettoyage et l'entretien des surfaces en linoléum. Évitez d'utiliser des produits autres que ceux recommandés, car ils pourraient endommager ou compromettre les surfaces en linoléum.

Silestone

Pour le nettoyage quotidien, utilisez une éponge douce ou un chiffon en microfibre et de l'eau tiède, en ajoutant du savon neutre. Pour des instructions sur comment traiter des taches plus difficiles, veuillez contacter le service commercial. Comportement en cas de chocs : parmi les caractéristiques qui distinguent les surfaces de ce type, il y a une haute résistance aux chocs et impacts. Il est évidemment nécessaire d'éviter tout type de choc dans les zones qui, en raison des traitements spécifiques, peuvent être plus délicates et plus exposées (coins et arêtes, ...). Comportement en présence de chaleur : ne placez pas d'objets chauds ni de conducteurs de chaleur, tels que des casseroles, des poêles ou d'autres ustensiles, en contact direct avec la surface.

AL (Aluminium)

Nettoyer le produit avec un chiffon doux et humide en utilisant un détergent neutre.

Allgemeine hinweise zur verwendung der produkte von Et al.

Um eine lange Haltbarkeit der Produkte von Et al. zu garantieren, empfehlen wir regelmäßig zu überprüfen, ob die Schrauben korrekt eingeschraubt sind und von Wärmequellen fernhalten. Sitzmöbel sind so zu verwenden, dass die vier Beine oder das Gestell auf dem Boden aufliegen. Das Schaukeln auf den Beinen, das Stehen auf den Sitzmöbeln, das Sitzen auf der Rückenlehne oder den Armlehnen und das Verwenden des Artikels als Steighilfe ist zu unterlassen. Die Tische sind so zu verwenden, dass die vier Beine oder das Gestell auf dem Boden aufliegen. Das Sitzen oder Stehen auf der Tischplatte ist zu unterlassen. Am Ende der Lebensdauer dürfen die Produkte oder ihre Bestandteile nicht in der Umwelt entsorgt werden. Kontaktieren Sie ein Entsorgungsunternehmen und organisieren Sie den Transport der Einrichtungsgegenstände zur Abfallsammelstelle. Et al.

übernimmt keine Haftung für Schäden, die durch unsachgemäße Verwendung des Produkts entstehen.

Kunststoff

PA (Polyamid)

Das Produkt mit einem weichen und feuchten Tuch reinigen. Die Verwendung neutraler Reinigungsmittel, die mit Wasser verdünnt werden, wird empfohlen. Keine abrasiven Reinigungsmittel oder Reinigungsmittel, die – wenn auch nur in minimalen Mengen - Alkohol, Trichlorethylen, Ammoniak oder Lösungsmittel im Allgemeinen enthalten, verwenden.

PP (Polypropylen)

Das Produkt mit einem weichen und feuchten Tuch reinigen. Die Verwendung neutraler Reinigungsmittel, die mit Wasser verdünnt werden, wird empfohlen. Keine abrasiven Reinigungsmittel oder Reinigungsmittel, die – wenn auch nur in minimalen Mengen - Alkohol, Trichlorethylen, Ammoniak oder Lösungsmittel im Allgemeinen enthalten, verwenden. Rahmen aus PP mit UV-Schutzbeschichtung Die UV-Schutzbeschichtung nutzt sich im Verlauf der Zeit ab. Diese Abnutzung wird beschleunigt, wenn die Produkte über längere Zeit dauerhaft der Witterung und starken Temperaturschwankungen ausgesetzt sind. Um die Produkte möglichst lange in einwandfreiem Zustand zu erhalten, empfehlen wir, sie während des Winters an einem geschlossenen, trockenen Ort und vor starken Temperaturschwankungen geschützt aufzubewahren.

PVC (Polyvinylchlorid)

Waschen Sie das Produkt mit Wasser und farblosem Neutralreiniger. Mit Wasser bei einer Temperatur von nicht mehr als 30°C spülen.

XLP (Xiloplast)

Das Produkt mit Wasser und einem neutralen, farblosen Reinigungsmittel reinigen. Mit Wasser mit einer maximalen Temperatur von 30 °C abspülen. Das Produkt kann mit Geräten, die unter Druck stehen, gereinigt werden: Halten Sie die Spitze des Diffusors mindestens 60 cm von der Produktoberfläche entfernt.

Holz

Buche – Esche

Dazu sollten neutrale, mit Wasser verdünnte Reinigungsmittel verwendet werden. Die Verwendung neutraler Reinigungsmittel, die mit Wasser verdünnt werden, wird empfohlen. Anschließend mit einem nassen

Schwamm abwischen und mit einem trockenen Tuch nachtrocknen.

Bezüge

Stoffe

Fortis, Melva, Panarea, Amsterdam, Medley, Mirage, Chili, Reviva Hero, Reviva Iris, Reviva Amelia, Fabthirty Das Produkt mit einem weichen und feuchten Tuch reinigen und dabei ein neutrales Reinigungsmittel verwenden.

Leder und Kunstleder

Inca, Valencia, Ocean Das Produkt mit einem mit lauwarmem Wasser und neutralem Reinigungsmittel getränktem Schwamm reinigen.

Wolle

Fenice, Mood, Remix 3 Trockene Fleckentferner verwenden.

Metal

AC VR – AC CR

(Stahl: Lackiert – Verchromt)

Das Produkt mit einem weichen und feuchten Tuch reinigen und dabei ein neutrales Reinigungsmittel verwenden. Bei Verwendung im Freien wird dringend eine Oberflächenbehandlung wie Verzinkung oder Kataphorese empfohlen. Um die Produkte möglichst lange in einwandfreiem Zustand zu erhalten, empfehlen wir, sie während des Winters an einem geschlossenen, trockenen Ort aufzubewahren, um Kondenswasserbildung zu vermeiden. Bei Einlagerung der Produkte in Küstennähe empfehlen wir, vor dem Winter und alle drei Monate die Metallflächen mit einem weichen Tuch, getränkt mit Wasser oder einem Reinigungsmittel, zu säubern und anschließend mit Vaselineöl zu schützen.

AX

(Edelstahl: Matt – Poliert)

Das Produkt mit einem weichen und feuchten Tuch reinigen und dabei ein neutrales Reinigungsmittel verwenden. Um das Produkt während einer eventuellen Lagerung zu schützen, sollte mit einem Tuch eine Paraffinschicht aufgetragen werden.

AL AND – AL PSH – AL VR

(Aluminium eloxiert – poliert – lackiert)

Das Produkt mit einem weichen und feuchten Tuch reinigen und dabei ein neutrales Reinigungsmittel verwenden.

Oberflächen von Tischplatten

LAM (Laminat)

Die Oberfläche regelmäßig mit einem mit warmem Wasser und mildem Reinigungsmittel getränktem Tuch säubern; hierzu eignen sich die meisten der haushaltsüblichen Reinigungs- und Desinfektionsmittel, sofern sie weder abrasiv noch alkalisch sind.

STR (HPL Compact Platte: Full color – Compact)

Die Oberfläche regelmäßig mit einem mit warmem Wasser und mildem Reinigungsmittel getränktem Tuch säubern; hierzu eignen sich die meisten der haushaltsüblichen Reinigungs- und Desinfektionsmittel, sofern sie weder abrasiv noch alkalisch sind.

Linoleum

Reinigen Sie die Oberfläche mit einem Mikrofasertuch, das mit warmem Wasser und einem neutralen Reiniger angefeuchtet ist. Für eine gründlichere Reinigung wird die Verwendung von speziellen Produkten zur Reinigung und Pflege von Linoleumbooberflächen empfohlen. Vermeiden Sie die Verwendung von Produkten, die nicht empfohlen werden, da diese die Linoleumbooberflächen beschädigen oder beeinträchtigen könnten

Silestone

Für die tägliche Reinigung verwenden Sie einen weichen Schwamm oder ein Mikrofasertuch und lauwarmes Wasser, ergänzt durch milden Seifenschaum. Für Hinweise zur Behandlung schwerer Flecken kontaktieren Sie bitte die Verkaufsabteilung. Verhalten bei Stößen: Zu den charakteristischen Eigenschaften dieser Oberflächen gehört ihre hohe Widerstandsfähigkeit gegen Stöße und Schläge. Natürlich sollte jeglicher Stoß in Bereichen vermieden werden, die aufgrund spezieller Verarbeitungen empfindlicher und stärker exponiert sein können (Ecken und Kanten, ...). Verhalten bei Hitze: Stellen Sie keine heißen Gegenstände wie Pfannen, Töpfe oder andere Kochutensilien oder Wärmeleiter dir

AL (Aluminium)

Das Produkt mit einem weichen und feuchten Tuch reinigen und dabei ein neutrales Reinigungsmittel verwenden.

Instruktionen generales para el uso de los productos Et al.

Para garantizar la duración en el tiempo de los productos Et al., recomendamos controlar periódicamente el ajuste correcto

de los tornillos y mantenerlos alejados de fuentes de calor. Los asientos deben utilizarse con las cuatro patas o la base apoyada en el suelo. Evitar balancearse con las patas, ponerse de pie sobre ellos, sentarse en el respaldo, sentarse en los apoyabrazos y utilizar el producto como escalera. Las mesas se deben utilizar con las cuatro patas o con la base apoyada en el suelo. Evitar sentarse en los sobros o ponerse de pie sobre ellos. Al final de su uso, los productos y sus componentes no se deben dispersar en el medio ambiente. Se recomienda comunicarse con las empresas encargadas de la eliminación de los residuos para su transporte al vertedero. Et al. declina cualquier responsabilidad por los daños que puedan resultar del uso inadecuado del producto. material plástico

PA (Poliamida)

Limpiar el producto con un paño suave y húmedo. Se recomienda el uso de detergentes neutros, preferiblemente diluidos en agua. No utilizar detergentes abrasivos o que contengan, aunque sea en una cantidad mínima, alcohol, tricloroetileno, amoniaco y disolventes en general.

PP (Polipropileno)

Limpiar el producto con un paño suave y húmedo. Se recomienda el uso de detergentes neutros, preferiblemente diluidos en agua. No utilizar detergentes abrasivos o que contengan, aunque sea en una cantidad mínima, alcohol, tricloroetileno, amoniaco y disolventes en general. Las carcasas en PP están tratadas anti-UV. El tratamiento anti-UV está sujeto a un desgaste que se acelera en caso de exposición continua y prolongada al mal tiempo y a cambios fuertes de temperatura. Para mantener el producto en buenas condiciones por mucho tiempo, le recomendamos que se mantengan en lugares cerrados y secos durante el invierno y alejado de los cambios fuertes de temperatura.

PVC (Cloruro de polivinilo)

Lavar el producto con agua y detergente neutro incoloro. Aclarar con agua a una temperatura no superior a 30°C.

XLP (Xiloplast)

Lavar el producto con agua y detergente neutro incoloro. Enjuagar con agua a temperatura no superior de 30 °C. El producto se puede lavar con dispositivos a presión: mantener la punta del difusor a una distancia mínima de 60 cm de la superficie del producto.

madera

Haya – Fresno

Limpiar el producto con un paño suave y húmedo. Se recomienda el uso de detergentes neutros, preferiblemente diluidos en agua. Después enjuagar con una esponja mojada y secar con un paño seco. revestimientos

tejido

Fortis, Melva, Panarea, Amsterdam, Medley, Mirage, Chili, Reviva Hero, Reviva Iris, Reviva Amelia, Fabthirty Limpiar el producto con un paño suave y húmedo usando detergente neutro.

piel y polipiel

Inca, Valencia, Ocean Limpiar el producto con una esponja embebida en agua tibia y detergente neutro.

lanas

Fenice, Mood, Remix 3 Utilizar quitamanchas en seco.

Metal

AC VR – AC CR – (Acero Barnizado – Cromado)

Limpiar el producto con un paño suave y húmedo usando detergente neutro.

Si los productos se utilizan en el exterior, es muy recomendable el tratamiento de galvanización o cataforesis. Para mantener el producto en buenas condiciones por mucho tiempo, recomendamos mantenerlo en lugares cerrados y secos durante el invierno para evitar la condensación.

Antes de la temporada del invierno y trimestralmente, si los productos están cerca del mar, se recomienda limpiar las superficies en metal con un paño suave con agua o detergentes y protegerlos con aceite de vaselina.

AX (Acero inoxidable: satinado – pulido)

Limpiar el producto con un paño suave y húmedo usando detergente neutro. Para proteger el producto durante el almacenamiento se recomienda aplicar una fina capa de parafina utilizando un paño.

AL AND – AL PSH – AL VR (Aluminio anodizado – pulido – barnizado)

Limpiar el producto con un paño suave y húmedo usando detergente neutro.

acabados de sobres de mesa

LAM (Laminado)

La superficie se debe limpiar regularmente con un paño humedecido en agua caliente y

detergente suave; se toleran bien casi todos los detergentes o desinfectantes domésticos habituales, siempre que no sean abrasivos o alcalinos.

STR

(Estratificado HPL: Full color – Compact)

La superficie se debe limpiar regularmente con un paño humedecido en agua caliente y detergente suave; se toleran bien casi todos los detergentes o desinfectantes domésticos habituales, siempre que no sean abrasivos o alcalinos.

Linoleum

Limpiar utilizando un paño de microfibra humedecido con agua tibia y detergente neutro. Para una limpieza más completa, se recomienda el uso de productos específicos para la limpieza y mantenimiento de superficies de linóleo. Evite el uso de productos distintos a los recomendados, ya que podrían dañar o comprometer las superficies de linóleo.

Silestone

Para la limpieza diaria use una esponja suave o un paño de microfibra y agua tibia, añadiendo jabón neutro. Para indicaciones sobre cómo tratar manchas más difíciles, por favor contacte al departamento comercial. Comportamiento en caso de golpes: entre las características que distinguen a superficies de este tipo está su alta resistencia a golpes e impactos. Obviamente, es necesario evitar cualquier tipo de golpe en las áreas que, debido a procesamientos específicos, pueden ser más delicadas y estar más expuestas (esquinas y bordes,...). Comportamiento frente al calor: no coloque objetos calientes ni conductores de calor, como sartenes, ollas.

AL (Aluminio)

Limpiar el producto con un paño suave y húmedo usando detergente neutro.

legenda / index / légende / zeichenerklärung / leyenda



Per esterni nelle finiture idonee / For outdoor use, in the suitable finishes / Pour l'extérieur, dans certaines finitions / Für aussen, in den geeigneten Ausführungen / Para utilización ex exteriores, en los acabados adecuados



Resistente a salsedine, cloro e acque termali nelle finiture idonee / Résistant to salty environments, chlorine and thermal waters - in the suitable finishes / Résistant à la salinité, chlore et eaux thermales, dans certaines finitions / Beständig gegen salzhaltige Umgebung, Chlor und Thermalwasser, in den geeigneten Ausführungen / Resistente a la salinidad, cloro y aguas termales, en los acabados adecuados



Meccanismo di ritorno / Kick-back device / Mechanisme de retour / Automatischer zurück Systeme / Sistema de vuelta



Riciclato / Recycled / Recyclé / Recycelt / Reciclado



Riciclabile / Recyclable / Recyclable / Recycling / Reciclabile



Girevole / Swivelling / Pivotant / Drehbar / Giratorio

AC

Acciaio
Steel
Acier
Stahl
Acero

AL

Alluminio
Aluminium
Aluminium
Aluminium
Aluminio

ALAND

Alluminio Anodizzato
Anodized Aluminium
Aluminium Anodisé
Eloxiertes Aluminium
Aluminio Anodizado

ALPSH

Alluminio Lucidato
Polished Aluminium
Aluminium Brillant
Poliertes Aluminium
Aluminio Pulido

ALVR

Alluminio verniciato
Painted aluminium
Aluminium verni
Lackiert Aluminium
Aluminio barnizado

ALV

Alveolare di alluminio
Aluminium cellular
Aluminium alvéolaire
Aluminium-Wabenkern
Alveolar de alumin

AX

Acciaio Inox
Stainless Steel
Acier Inoxydable
Edelstahl
Acero Inoxidable

CO

Cotone
Cotton
Coton
Baumwolle
Algodón

COM

Tessuto fornito dal cliente
Customer own material
Tissu client
Kundenstoff
Tela cliente

CR

Cromato
Chrome
Chromé
Verchromt
Cromado

LAM

Laminato
Laminate
Stratifié
Laminat
Laminado

LE

Legno
Wood
Bois
Holz
Madera

NY

Nylon
Nylon
Nylon
Nylon
Nylon

PA

Poliammide
Polyamide
Polyamide
Polyamid
Poliamida

PL

Poliestere
Polyester
Polyester
Polyester
Poliéster

PP

Polipropilene
Polypropylene
Polypropylène
Polypropylen
Polipropileno

PVC

Polivinilcloruro
Polyvinyl chloride
Polychlorure de vinyle
Polyvinylchlorid
Cloruro de polivinilo

STR

Stratificato HPL
HPL Solid Laminate
Stratifié HPL
HPL Compactplatte
Estratificado HPL

TE

Tessuto
Fabric
Tissu
Stoff
Tejido

VE

Vetro satinato
Satin-finish glass
Verre satiné
Satinierem Glas
Cristal

VR

Verniciato
Paint Finishing
Verni
Lackiert
Barnizado

WO

Lana
Wool
Laine
Wolle
Lana

[back to index](#)

